


APP CRS	Rwy Idg	12000
087°	TDZE	21
	Apt Elev	36

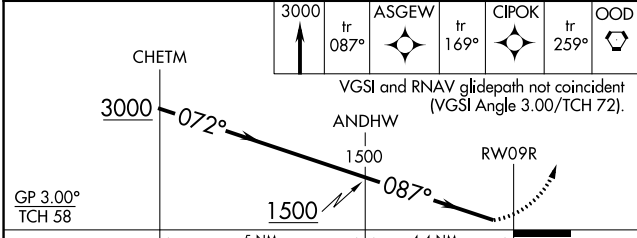
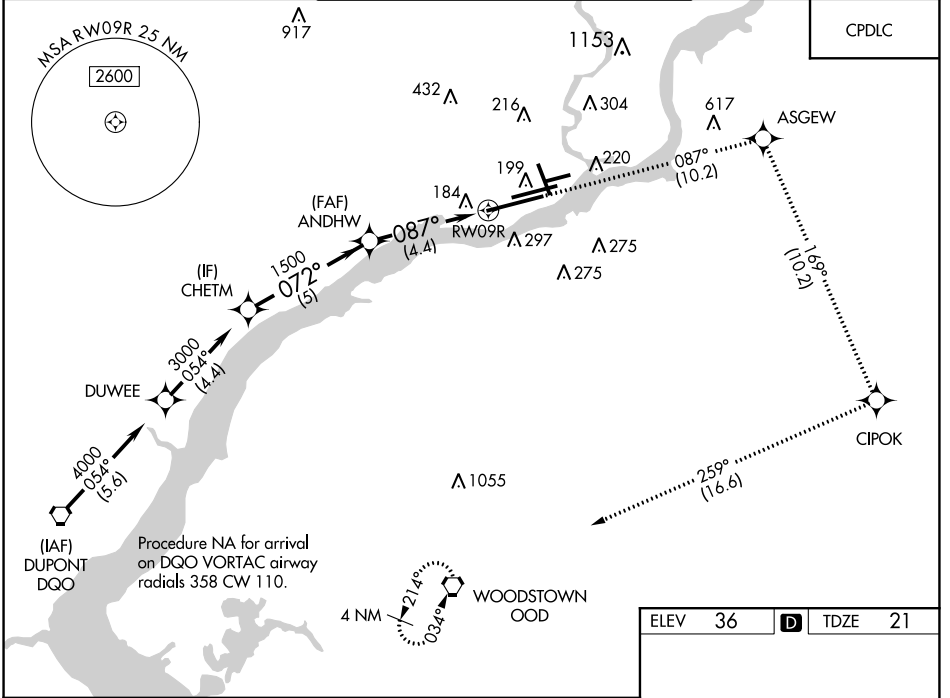
RNAV (RNP) Z RWY 9R

PHILADELPHIA INTL (PHL)

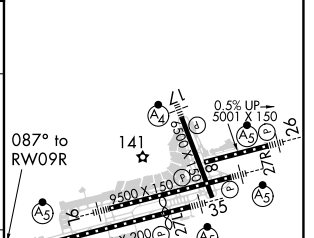
▼ For uncompensated Baro-VNAV systems, procedure NA below -12°C (10°F) or above 54°C (130°F). For inop ALS, increase RNP 0.16 all Cats visibility to RVR 4500 and RNP 0.30 all Cats visibility to 1½ SM. Rwy 9R helicopter visibility reduction below RVR 4000 NA.

ALSF-2

MISSED APPROACH: Climb to 3000 on track 087° to ASGEW and on track 169° to CIPOK, and on track 259° to OOD VORTAC and hold.

D-ATIS	PHILADELPHIA APP CON	PHILADELPHIA TOWER	GND CON	CLNC DEL
ARR 133.4	118.35 319.15	118.5 327.05 (Rwys 9L/27R, 8/26 and 17/35)	121.9 348.6	118.85 348.6
DEP 135.925		135.1 327.05 (Rwy 9R/27L)		



ELEV	36	D	TDZE	21
------	----	----------	------	----



CATEGORY	A	B	C	D
RNP 0.16 DA		284/40	263 (300-¾)	
RNP 0.30 DA		460/50	439 (500-1)	

AUTHORIZATION REQUIRED

TDZ/CL Rwy 9R
 HIRL all Rwys
 REIL Rwys 9L and 35

NE-4, 15 JUL 2021 to 12 AUG 2021

NE-4, 15 JUL 2021 to 12 AUG 2021