

ARLIN FOUR ARRIVAL

AL-322 (FAA)

PHOENIX, ARIZONA

SW-4, 15 JUL 2021 to 12 AUG 2021

ARRIVAL ROUTE DESCRIPTION

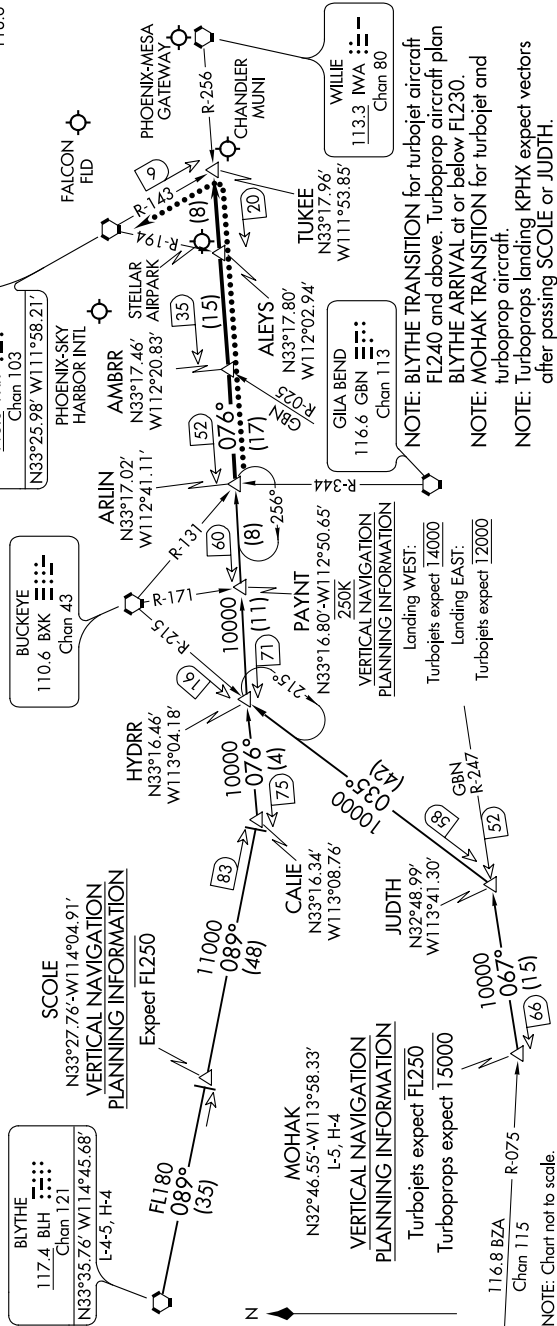
BLYTE TRANSITION (BLH.ARLIN4): From over BLH VORTAC on BLH R-089 and IWA R-256 to ARLIN INT. Thence, . . .

MOHAK TRANSITION (MOHAK.ARLIN4): From over MOHAK INT on GBN R-247 and BXK R-215 to HYDRR INT, then on IWA R-256 to ARLIN INT. Thence, . . .

PHOENIX SKY HARBOR INTL: Rwy 7L/R or 8: From over ARLIN, Expect vectors to final approach course; Rwy 25L/R or 26: From over ARLIN, on IWA R-256 to TUKEE. Expect vectors to final approach course prior to TUKEE.

SATELLITE AIRPORTS: Expect vectors after passing SCOPE or JUDTH.

LOST COMMUNICATIONS: After ARLIN, on IWA R-256 and PXR R-143 to PXR VORTAC.



NOTE: RADAR required
NOTE: DME required

NOTE: BLYTHE TRANSITION for turboprop aircraft FL240 and above. Turboprop aircraft plan BLYTHE ARRIVAL at or below FL230.
NOTE: MOHAK TRANSITION for turboprop and turboprop aircraft.
NOTE: Turboprops landing KPHX expect vectors after passing SCOPE or JUDTH.

ARLIN FOUR ARRIVAL

PHOENIX, ARIZONA

SW-4, 15 JUL 2021 to 12 AUG 2021