

# HI-TACAN Y RWY 30

TACAN MUO Chan <b>87</b>	APCH CRS <b>295°</b>	Rwy Idg <b>13,510</b> TDZE <b>2996</b> Arprt Elev <b>2996</b>
--------------------------	----------------------	---

JAL-323 [USAF]

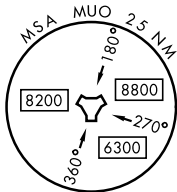
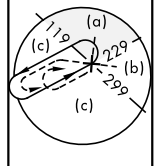
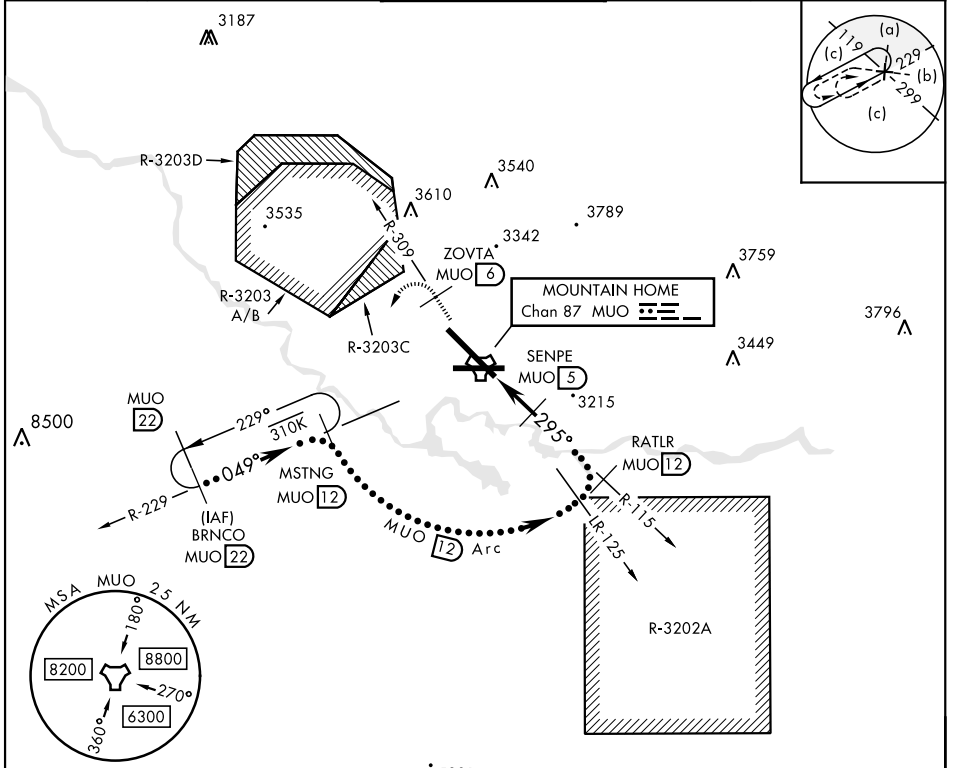
MOUNTAIN HOME AFB (KMUO)

▼ \* When ALS inop, increase CAT CDE vis to 1 3/8 miles.  
 \*\* Circling NA NE of Rwy 12-30.



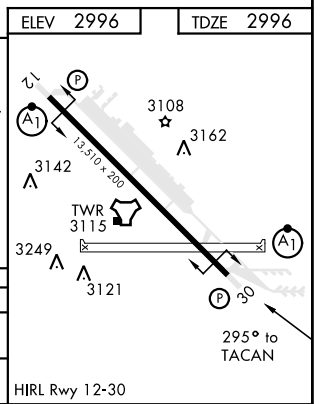
MISSED APPROACH: Climb to 10,000 via MUO R-309 to ZOVTA/6 DME, turn left and intercept MUO R-229 to MSTNG/12 DME and hold. Continue climb in hold to 10,000.

ATIS <b>273.5</b>	MOUNTAIN HOME APP CON <b>124.8 259.1</b>	MOUNTAIN HOME TOWER <b>133.85 253.5</b>	GND CON <b>120.5 275.8</b>	CLNC DEL <b>127.1 290.425</b>
-------------------	--	---	----------------------------	-------------------------------



EMERG SAFE ALT 100 NM 14,200

10,000 ↑ MUO R-309	ZOVTA MUO 6	MSTNG R-229	MSTNG R-229	BRNCO R-229
TACAN JERLU 1.1	SENPE 5	5000	6100	10,000
3.9 NM		Arc	TCH 40	
CATEGORY	C	D	E	
S-30 *	3480/50	484 (500-1)		
CIRCLING **	3560-1 1/2 564 (600-1 1/2)	3560-2 564 (600-2)	3700-2 1/2 704 (800-2 1/2)	



# HI-TACAN Y RWY 30

NW-1, 15 JUL 2021 to 12 AUG 2021

NW-1, 15 JUL 2021 to 12 AUG 2021