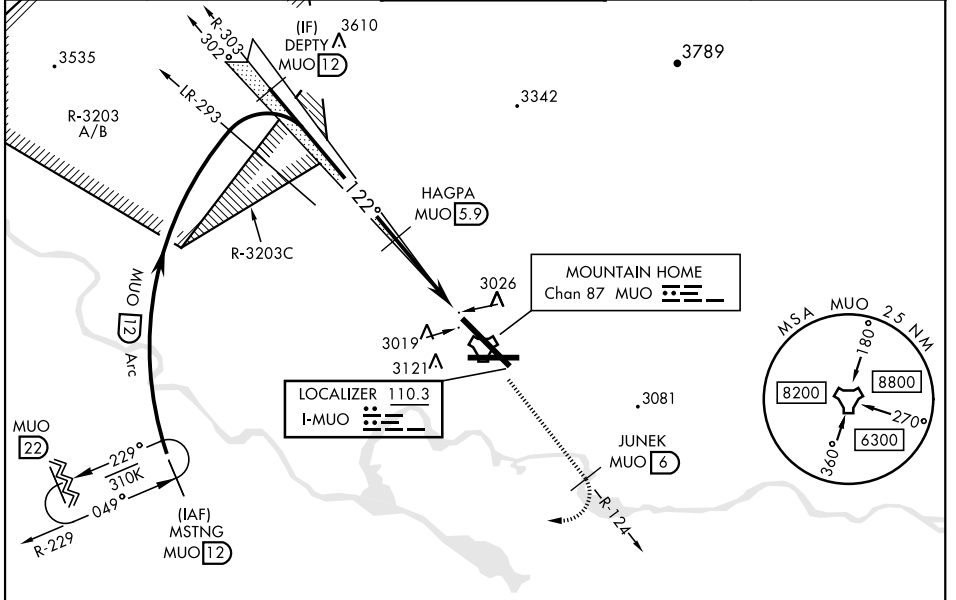


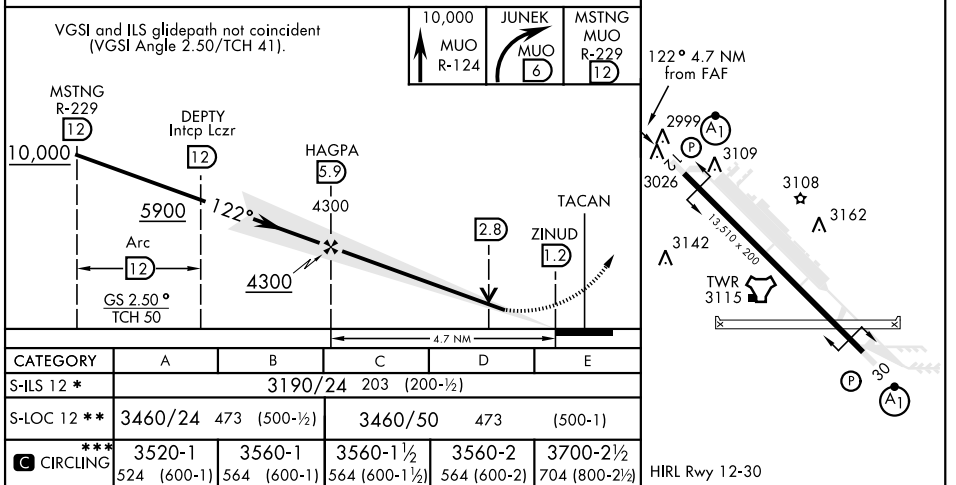
ILS or LOC Z RWY 12

LOC I-MUO 110.3	APCH CRS 122°	Rwy Ldg 13,510 TDZE 2987 Arprt Elev 2996	AL-323 [USAF]	MOUNTAIN HOME AFB (KMUO)
▼ * When ALS inop, increase RVR to 40, vis to ¼ mile. ** When ALS inop, increase CAT AB RVR to 55 and vis to 1 mile, CAT CDE vis to 1¾ miles. *** Circling NA NE of Rwy 12-30.			ALSF-1 (A1)	MISSED APPROACH: Climb to 10,000 via MUO R-124 to JUNEK/6 DME, turn right and intercept MUO R-229 to MSTNG/12 DME and hold. Continue climb in hold to 10,000.
ATIS 273.5	MOUNTAIN HOME APP CON 124.8 259.1	MOUNTAIN HOME TOWER 133.85 253.5	GND CON 120.5 275.8	CLNC DEL 127.1 290.425



RADAR or DME REQUIRED

EMERG SAFE ALT 100 NM 14,200



ILS or LOC Z RWY 12

NW-1, 15 JUL 2021 to 12 AUG 2021

NW-1, 15 JUL 2021 to 12 AUG 2021