

# ILS or LOC Z RWY 30

LOC I-BRN <b>111.7</b>	APCH CRS <b>302°</b>	Rwy Ldg <b>13,510</b> TDZE <b>2996</b> Arprt Elev <b>2996</b>
---------------------------	-------------------------	------------------------------------------------------------------------------

AL-323 [USAF]

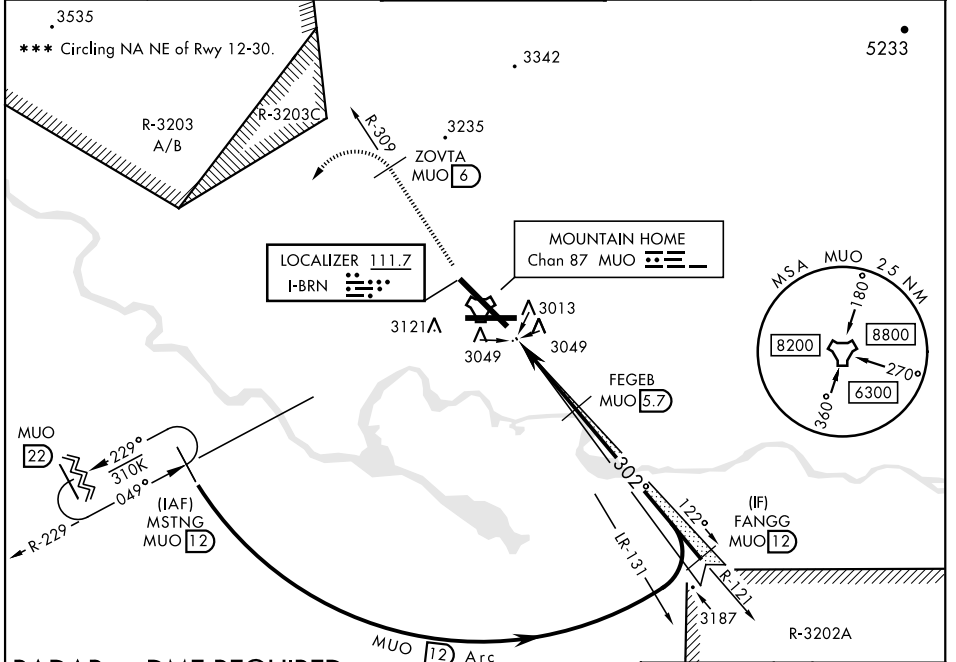
MOUNTAIN HOME AFB (KMUO)

▼ \* When ALS inop, increase CAT ABCDE RVR to 47 and vis to 1 mile.  
 \*\* When ALS inop, increase CAT AB RVR to 55 and vis to 1 mile, CAT CDE vis to 1 3/8 miles.
 

 ALSF-1  

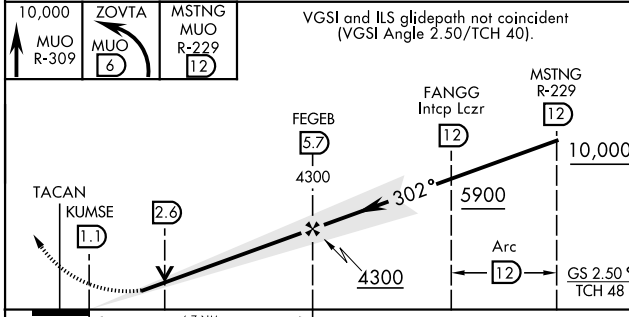
 MISSED APPROACH: Climb to 10,000 via MUO R-309 to ZOVTA/6 DME, turn left and intcp MUO R-229 to MSTNG/12 DME and hold. Continue climb in hold to 10,000.

ATIS <b>273.5</b>	MOUNTAIN HOME APP CON <b>124.8 259.1</b>	MOUNTAIN HOME TOWER <b>133.85 253.5</b>	GND CON <b>120.5 275.8</b>	CLNC DEL <b>127.1 290.425</b>
----------------------	---------------------------------------------	--------------------------------------------	-------------------------------	----------------------------------



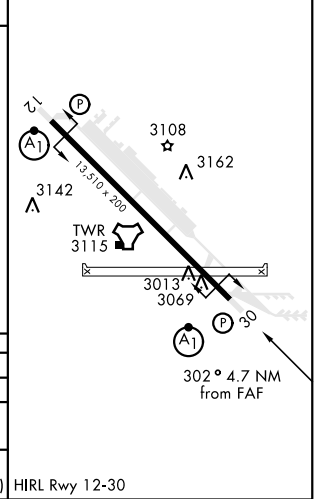
## RADAR or DME REQUIRED

EMERG SAFE ALT 100 NM 14,200



ELEV 2996	TDZE 2996
-----------	-----------

CATEGORY	A	B	C	D	E
S-ILS 30 *	3246/40 250 (300-3/4)				
S-LOC 30 **	3460/24	464 (500-1/2)	3460/50 464 (500-1)		
CIRCLING ***	3520-1	3560-1	3560-1 1/2	3560-2	3700-2 1/2
	524 (600-1)	564 (600-1)	564 (600-1 1/2)	564 (600-2)	704 (800-2 1/2)



# ILS or LOC Z RWY 30

NW-1, 15 JUL 2021 to 12 AUG 2021

NW-1, 15 JUL 2021 to 12 AUG 2021