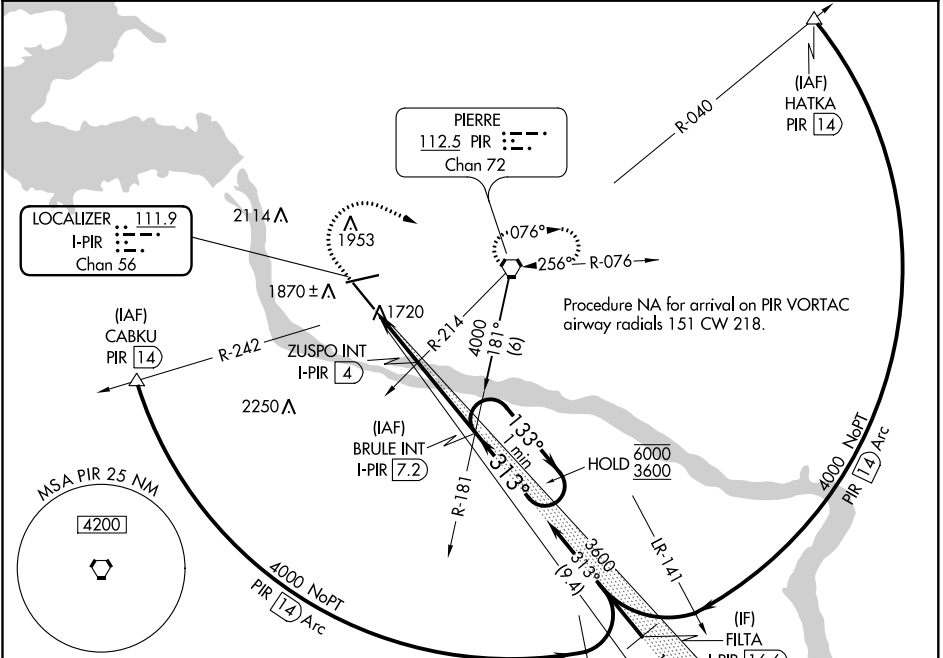


LOC/DME I-PIR 111.9 Chan 56	APP CRS 313°	Rwy Ldg TDZE Apt Elev	6900 1720 1744
--	------------------------	-----------------------------	---

ILS or LOC RWY 31
PIERRE RGNL (PIR)

▲ For inop ALS, increase S-LOC 31 Cat C/D visibility to $\frac{2}{3}$ SM. **MALSR** MISSED APPROACH: Climb to 2400 then climbing right turn to 4000 direct PIR VORTAC and hold, continue climb-in-hold to 4000.

ASOS 119.025	MINNEAPOLIS CENTER 125.1 269.1	CTAF 122.70	UNICOM 122.95
------------------------	--	-----------------------	-------------------------

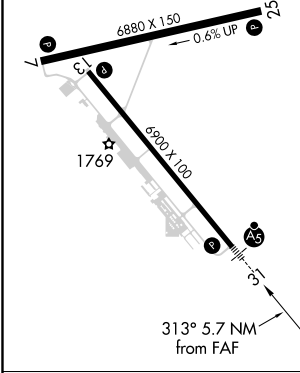


NC-1, 15 JUL 2021 to 12 AUG 2021

NC-1, 15 JUL 2021 to 12 AUG 2021

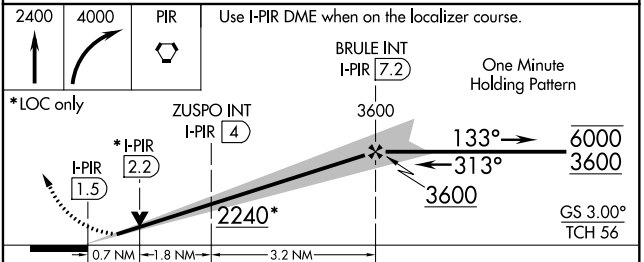
ELEV 1744	D	TDZE 1720
-----------	----------	-----------

REIL Rwy 7, 13, and 25
HIRL Rwy 7-25 and 13-31



▲ 2520

2400 4000 PIR Use I-PIR DME when on the localizer course.



CATEGORY	A	B	C	D
----------	---	---	---	---

S-ILS 31	1920- $\frac{1}{2}$ 200 (200- $\frac{1}{2}$)			
S-LOC 31	1980- $\frac{1}{2}$ 260 (300- $\frac{1}{2}$)			
C CIRCLING	2240-1 496 (500-1)	2300-1 556 (600-1)	2400-1 $\frac{3}{4}$ 656 (700-1 $\frac{3}{4}$)	2460-2 $\frac{1}{4}$ 716 (800-2 $\frac{1}{4}$)