

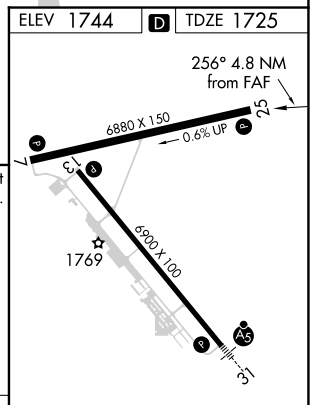
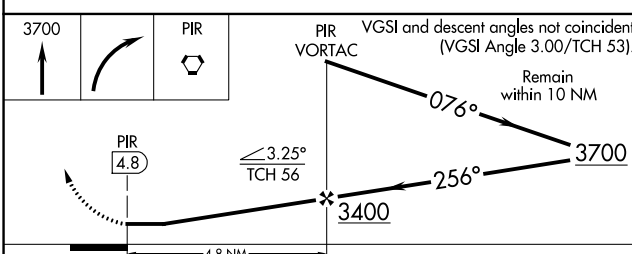
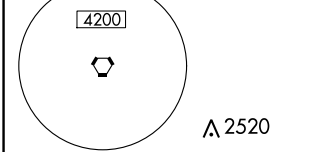
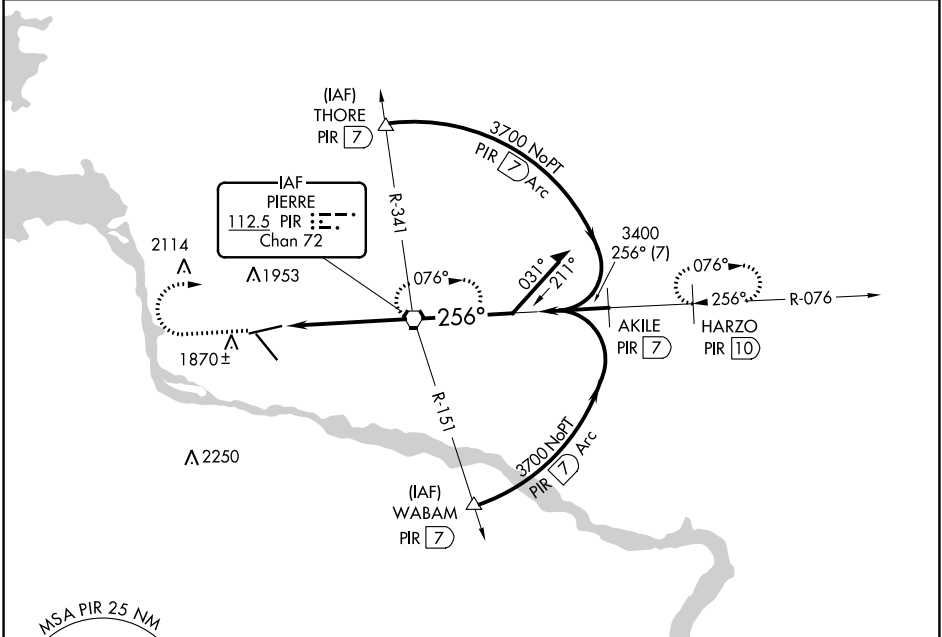
VORTAC PIR 112.5 Chan 72	APP CRS 256°	Rwy ldg TDZE Apt Elev 6880 1725 1744
---------------------------------------	------------------------	--

VOR or TACAN RWY 25

PIERRE RGNL (PIR)

MISSED APPROACH: Climb to 3700 then right turn direct PIR VORTAC and hold. (TACAN aircraft continue via PIR R-076 to HARZO 10 DME and hold east, right turns, 256° inbound)

ASOS 119.025	MINNEAPOLIS CENTER 125.1 269.1	CTAF 122.7	UNICOM 122.95
------------------------	--	----------------------	-------------------------



CATEGORY	A	B	C	D	REIL Rwy 7, 13, and 25 HIRL Rwy 7-25 and 13-31 FAF to MAP 4.8 NM
	S-25	2120-1	395 (400-1)	2120-1½ 395 (400-1¼)	
CIRCLING	2240-1 496 (500-1)	2300-1 556 (600-1)	2400-1¾ 656 (700-1¾)	2460-2¼ 716 (800-2¼)	Knots Min:Sec
					60 4:48 90 3:12 120 2:24 150 1:55 180 1:36

NC-1, 15 JUL 2021 to 12 AUG 2021

NC-1, 15 JUL 2021 to 12 AUG 2021