

HI-ILS or LOC Z RWY 15L

LOC I-TRT 109.9	APCH CRS 145°	Rwy ldg TDZE 8352 742 Arprt Elev 761
---------------------------	-------------------------	-----------------------------------------------------------------------

AL-341 [USAF]

RANDOLPH AFB (KRND)

RADAR or DME required. ALSF-1

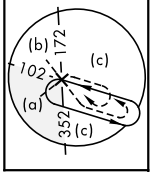
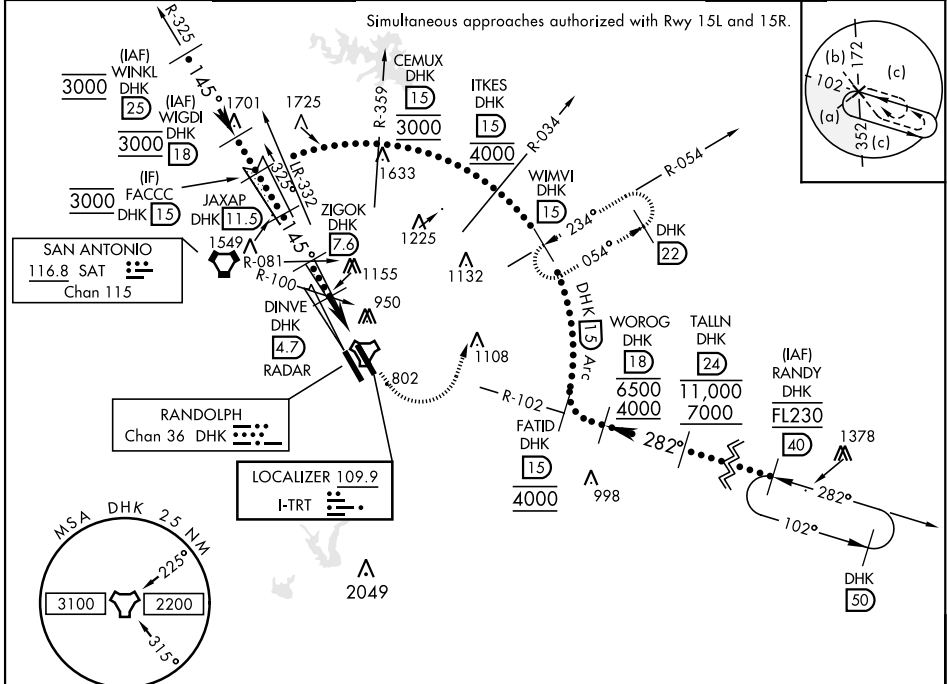
*When ALS inop, increase RVR to 40, vis to 3/4 mile.
 **When ALS inop increase vis to 1 1/8 miles.
 ***Circling not authorized SW of Rwy 15L-33R.



MISSED APPROACH: Climb to 1500, then climbing left turn heading 024° to 3000, intercept DHK TACAN R-054 to WIMVI and hold.

ATIS ★ 290.525	SAN ANTONIO APP CON 128.05 318.1	RANDOLPH TOWER ★ 128.25 294.7	RANDOLPH GND CON 119.65 275.8	CLNC DEL (RWY 15L-33R) 338.35	HANGOVER ATIS ★ 327.8	HANGOVER TOWER ★ 120.5 291.1	HANGOVER GND CON 124.75 353.75
--------------------------	--------------------------------------------	-----------------------------------------	-----------------------------------------	-----------------------------------------	---------------------------------	----------------------------------------	------------------------------------------

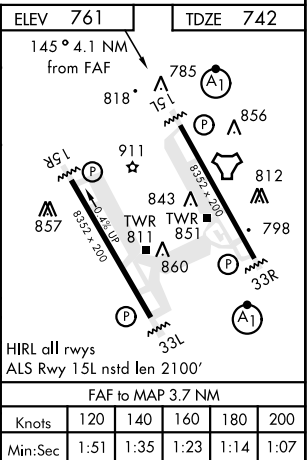
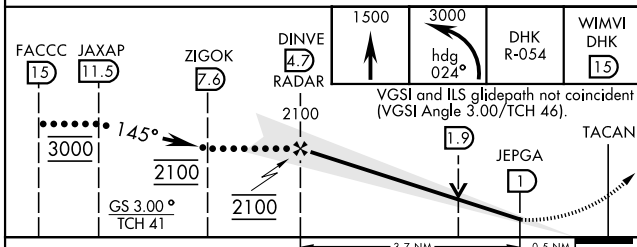
Simultaneous approaches authorized with Rwy 15L and 15R.



SC-3, 15 JUL 2021 to 12 AUG 2021

SC-3, 15 JUL 2021 to 12 AUG 2021

EMERG SAFE ALT 100 NM 4100



CATEGORY	C	D	E
S-ILS 15L*	942/40	200	(200-34)
S-LOC 15L**	1240/60	498	(500-1 1/8)
CIRCLING***	1260-1 1/2 499 (500-1 1/2)	1800-3	1039 (1100-3)

HIRL all rwys					
ALS Rwy 15L nstd len 2100'					
FAF to MAP 3.7 NM					
Knots	120	140	160	180	200
Min:Sec	1:51	1:35	1:23	1:14	1:07

HI-ILS or LOC Z RWY 15L