

ILS or LOC RWY 33L

LOC I-VQE 111.1	APCH CRS 325°	Rwy Ldg TDZE 8352 733 Arprt Elev 761
---------------------------	-------------------------	---

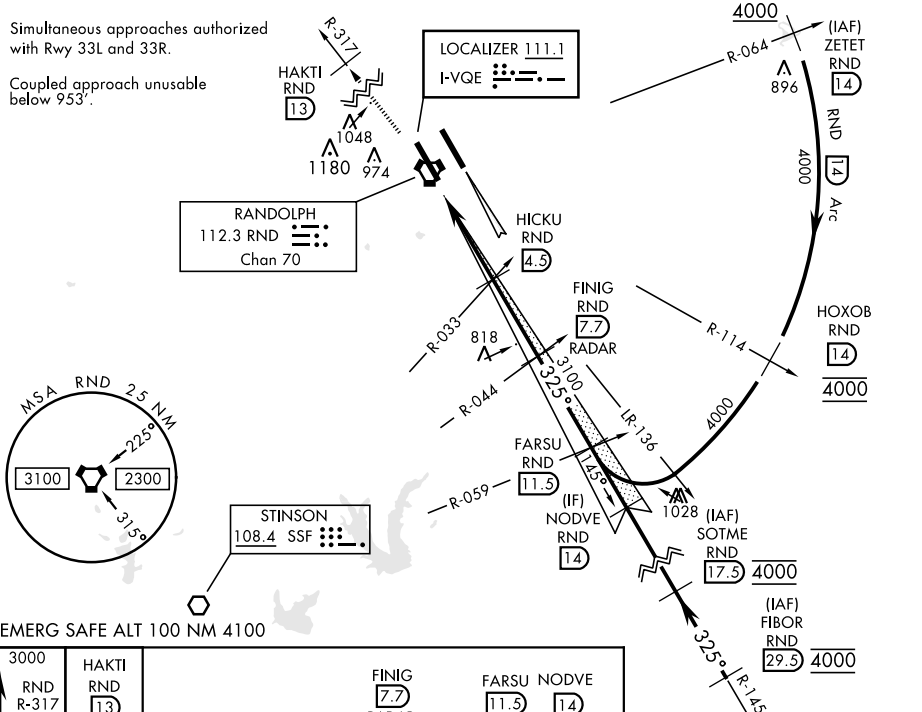
AL-341 [USAF]

RANDOLPH AFB (KRND)

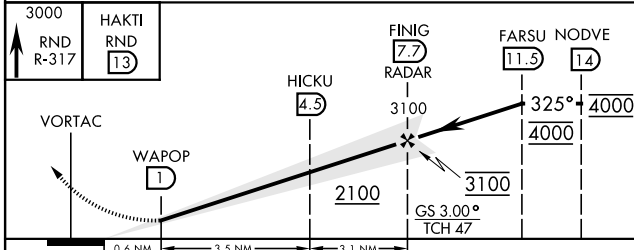
RADAR or DME required.		MISSED APPROACH: Climb to 3000 out RND VORTAC R-317 to 13 DME (HAKTI). Expect ATC instructions.					
* Circling not authorized NE of Rwy 15R-33L.							
ATIS ★	SAN ANTONIO APP CON	RANDOLPH TOWER ★	RANDOLPH GND CON	CLNC DEL (RWY 15L-33R)	HANGOVER ATIS ★	HANGOVER TOWER ★	HANGOVER GND CON
290.525	128.05 318.1	128.25 294.7	119.65 275.8	338.35	327.8	120.5 291.1	124.75 353.75

Simultaneous approaches authorized with Rwy 33L and 33R.

Coupled approach unusable below 953'.



EMERG SAFE ALT 100 NM 4100



CATEGORY	A	B	C	D	E
S-ILS 33L	933/40		200	(200-¾)	
S-LOC 33L	1080/55		347	(400-1)	
CIRCLING*	1220-1 459 (500-1)	1280-1 519 (600-1)	1500-2 739 (800-2)	1800-3	1039 (1100-3)
WITHOUT LAST STEP DOWN FIX					
S-LOC 33L	1140/55	407 (400-1)	1140/60	407	(400-1½)
CIRCLING*	1220-1 459 (500-1)	1280-1 519 (600-1)	1500-2 739 (800-2)	1800-3	1039 (1100-3)

ELEV 761	TDZE 733
ALS Rwy 15L nstd len 2100' HIRL all rwys	

Knots	60	90	120	150	180
Min:Sec	6:42	4:28	3:21	2:41	2:14

ILS or LOC RWY 33L

SC-3, 15 JUL 2021 to 12 AUG 2021

SC-3, 15 JUL 2021 to 12 AUG 2021