

ILS or LOC Y RWY 15L

LOC I-TRT 109.9	APCH CRS 145°	Rwy Ldg TDZE Arprt Elev 8352 742 761	AL-341 [USAF]	RANDOLPH AFB (KRND)
---------------------------	-------------------------	--	---------------	---------------------

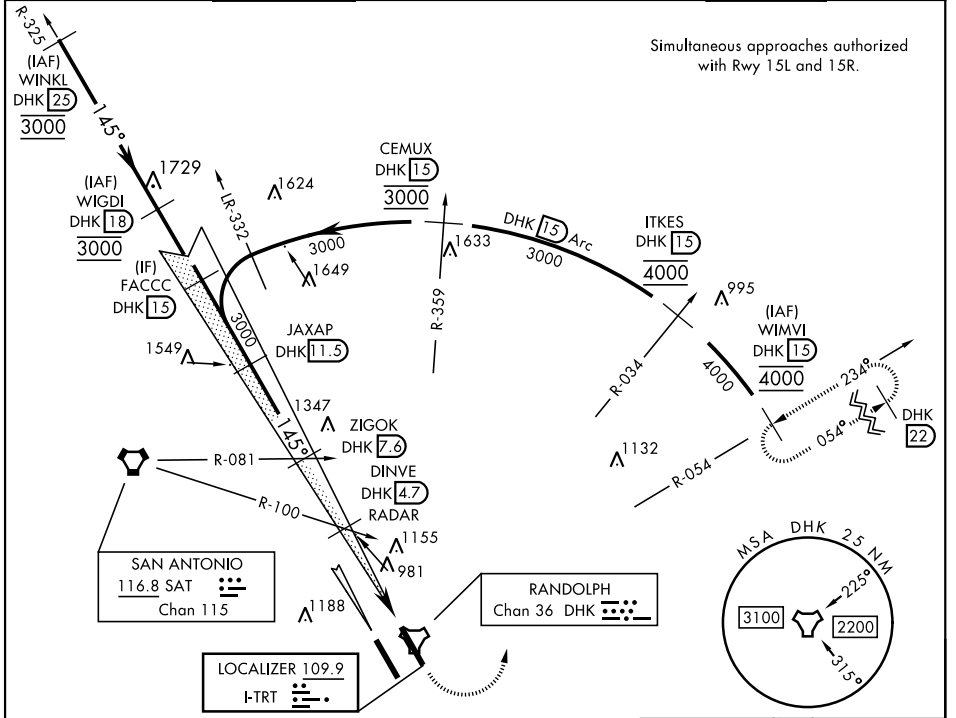
RADAR or DME required.

* When ALS inop, increase CAT AB RVR to 55, vis to 1 mile; CAT CDE to 1 1/2 miles.
** Circling not authorized SW of Rwy 15L-33R.

ALS-F1

MISSED APPROACH: Climb to 1500, then climbing left turn heading 024° to 3000. Intercept DHK TACAN R-054 to WIMVI and hold.

ATIS ★ 290.525	SAN ANTONIO APP CON 128.05 318.1	RANDOLPH TOWER ★ 128.25 294.7	RANDOLPH GND CON 119.65 275.8	CLNC DEL (RWY 15L-33R) 338.35	HANGOVER ATIS ★ 327.8	HANGOVER TOWER ★ 120.5 291.1	HANGOVER GND CON 124.75 353.75
--------------------------	--	---	---	---	---------------------------------	--	--



Simultaneous approaches authorized with Rwy 15L and 15R.

SC-3, 15 JUL 2021 to 12 AUG 2021

SC-3, 15 JUL 2021 to 12 AUG 2021

EMERG SAFE ALT 100 NM 4100	ELEV 761		TDZE 742			
VGSI and ILS glidepath not coincident (VGSI Angle 3.00/TCH 46).	1500	3000	DHK R-054	WIMVI DHK 15		
FACCC 15 JAXAP 11.5 ZIGOK 7.6 DINVE 4.7 RADAR 2100	hdg 024°		145° 4.2 NM from FAF			
GS 3.00° TCH 41	↑ LOC only		851 900			
JEPGA 1		TACAN		893 851 832-200 33R		
CATEGORY		A	B	C	D	E
S-ILS 15L		942/40		200	(200-34)	
S-LOC 15L *		1240/40	498 (500-3/4)	1240/60	498	(500-1 1/2)
CIRCLING **		1240-1	479 (500-1)	1260-1 1/2	499 (500-1 1/2)	1800-3 1039 (1100-3)
HIRL all rwys		ALS Rwy 15L nstd len 2100'				
FAF to MAP 3.7 NM						
Knots		60	90	120	150	180
Min:Sec		3:42	2:28	1:51	1:29	1:14

ILS or LOC Y RWY 15L