

UNIVERSAL CITY, TEXAS

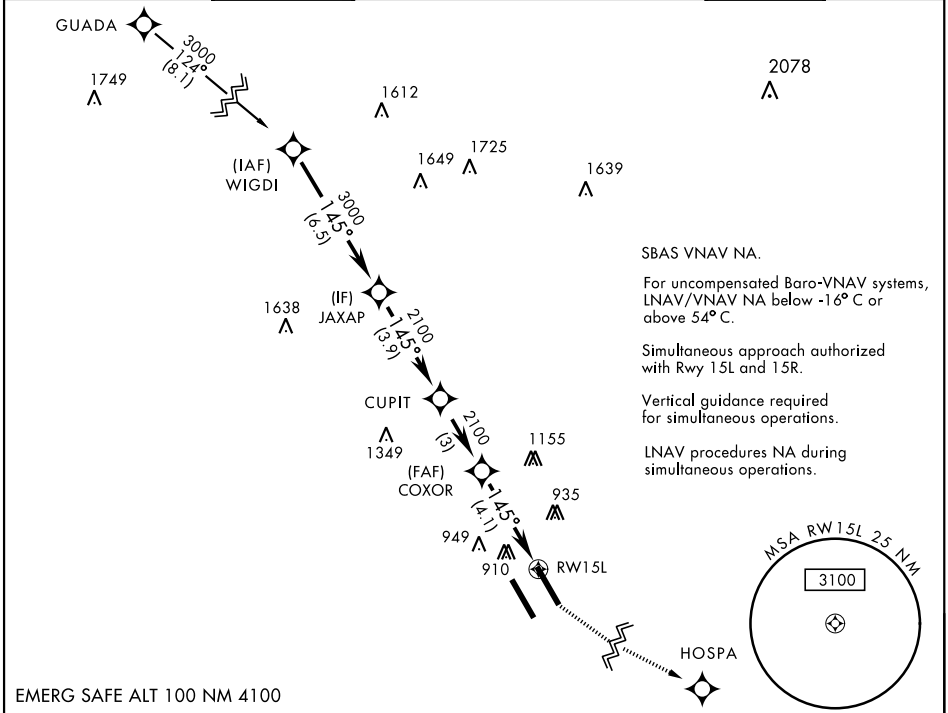
RNAV (GPS) RWY 15L

APCH CRS	Rwy Idg	8352
145°	TDZE	742
	Arpt Elev	761

AL-341 [USAF]

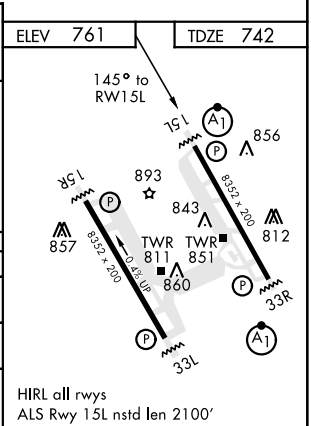
RANDOLPH AFB (KRND)

RNP APCH - GPS.				ALSF-1 	MISSED APPROACH: Climb to 1500, then climbing left turn to 3000 direct HOSPA. Expect ATC instructions.		
*When ALS inop, increase vis to 1 3/8 miles. **When ALS inop, increase CAT AB RVR to 55, vis to 1 mile; CAT CDE vis to 1 3/8 miles. ***Circling not authorized SW of Rwy 15L-33R.							
ATIS ★	SAN ANTONIO APP CON	RANDOLPH TOWER ★	RANDOLPH GND CON	CLNC DEL (RWY 15L-33R)	HANGOVER ATIS ★	HANGOVER TOWER ★	HANGOVER GND CON
290.525	128.05 318.1	128.25 294.7	119.65 275.8	338.35	327.8	120.5 291.1	124.75 353.75



EMERG SAFE ALT 100 NM 4100

	↑ LNAV only				1500	3000	HOSPA
CATEGORY	A	B	C	D	E		
LNAV/VNAV DA*	1240/60 498 (500-1 1/2)						
LNAV MDA**	1240/40 498 (500-3/4)		1240/60 498 (500-1 1/2)				
CIRCLING***	1240-1	479 (500-1)	1260-1 1/2 499 (500-1 1/2)	1800-3	1039 (1100-3)		



SC-3, 15 JUL 2021 to 12 AUG 2021

SC-3, 15 JUL 2021 to 12 AUG 2021

UNIVERSAL CITY, TEXAS

29°32'N-98°17'W

RANDOLPH AFB (KRND)

Amdt 1 28JAN21

RNAV (GPS) RWY 15L