

# RNAV (GPS) RWY 15R

APCH CRS	Rwy Idg	<b>8352</b>
<b>145°</b>	TDZE	<b>761</b>
	Arprt Elev	<b>761</b>

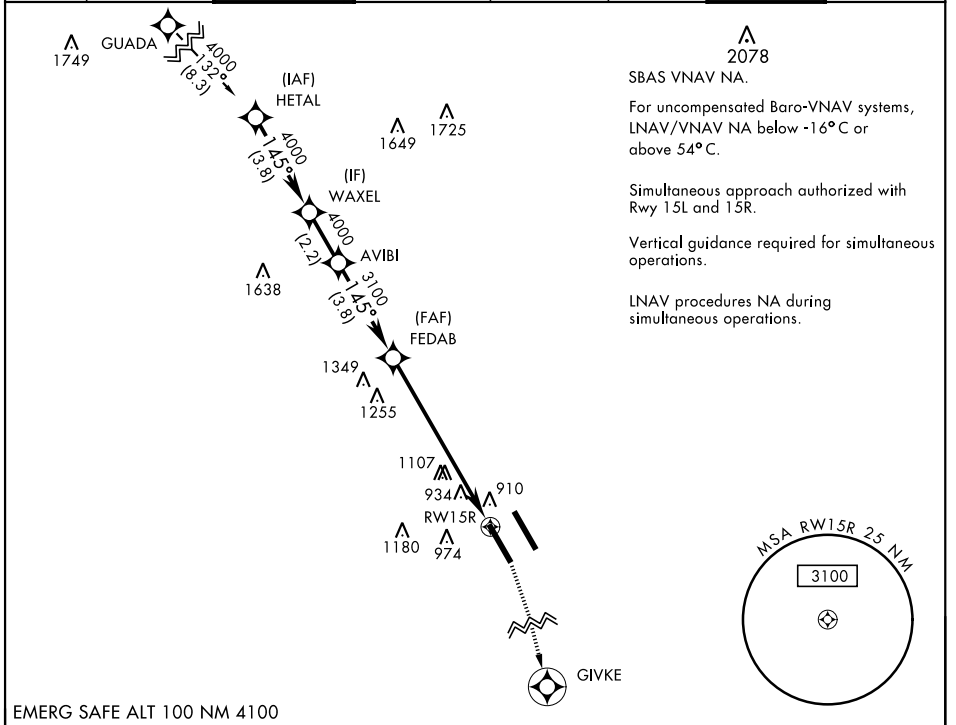
AL-341 [USAF]

RANDOLPH AFB (KRND)

RNP APCH - GPS.  
\* Circling not authorized NE of Rwy 15R-33L.

MISSED APPROACH: Climb to 1500 then climbing right turn to 3000 direct GIVKE. Expect ATC instructions.

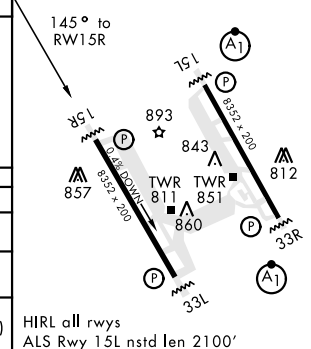
ATIS ★	SAN ANTONIO APP CON	RANDOLPH TOWER ★	RANDOLPH GND CON	CLNC DEL (RWY 15L-33R)	HANGOVER ATIS ★	HANGOVER TOWER ★	HANGOVER GND CON
<b>290.525</b>	<b>128.05 318.1</b>	<b>128.25 294.7</b>	<b>119.65 275.8</b>	<b>338.35</b>	<b>327.8</b>	<b>120.5 291.1</b>	<b>124.75 353.75</b>



SBAS VNAV NA.  
For uncompensated Baro-VNAV systems, LNAV/VNAV NA below -16°C or above 54°C.  
Simultaneous approach authorized with Rwy 15L and 15R.  
Vertical guidance required for simultaneous operations.  
LNAV procedures NA during simultaneous operations.

EMERG SAFE ALT 100 NM 4100

	† LNAV only				1500	3000	GIVKE	ELEV 761	TDZE 761
	HETAL	WAXEL	AVIBI	FEDAB					
	4000	4000	4000	3100					
	GP 3.00° TCH 47								
	3.8 NM	2.2 NM	3.8 NM	7.2 NM					
CATEGORY	A	B	C	D	E				
LNAV/VNAV DA	1220-1 3/8			459	(500-1 3/8)				
LNAV MDA	1500/55 739 (800-1)		1500-2	739	(800-2)				
CIRCLING*	1500-1 739 (800-1)		1500-2 739 (800-2)	1800-3	1039 (1100-3)				
	HIRL all rwys ALS Rwy 15L nstd len 2100'								



SC-3, 15 JUL 2021 to 12 AUG 2021

SC-3, 15 JUL 2021 to 12 AUG 2021

# RNAV (GPS) RWY 15R