

RNAV (GPS) RWY 33R

APCH CRS 325°	Rwy Idg TDZE Arpt Elev	8352 733 761
-------------------------	------------------------------	---

AL-341 [USAF]

RANDOLPH AFB (KRND)

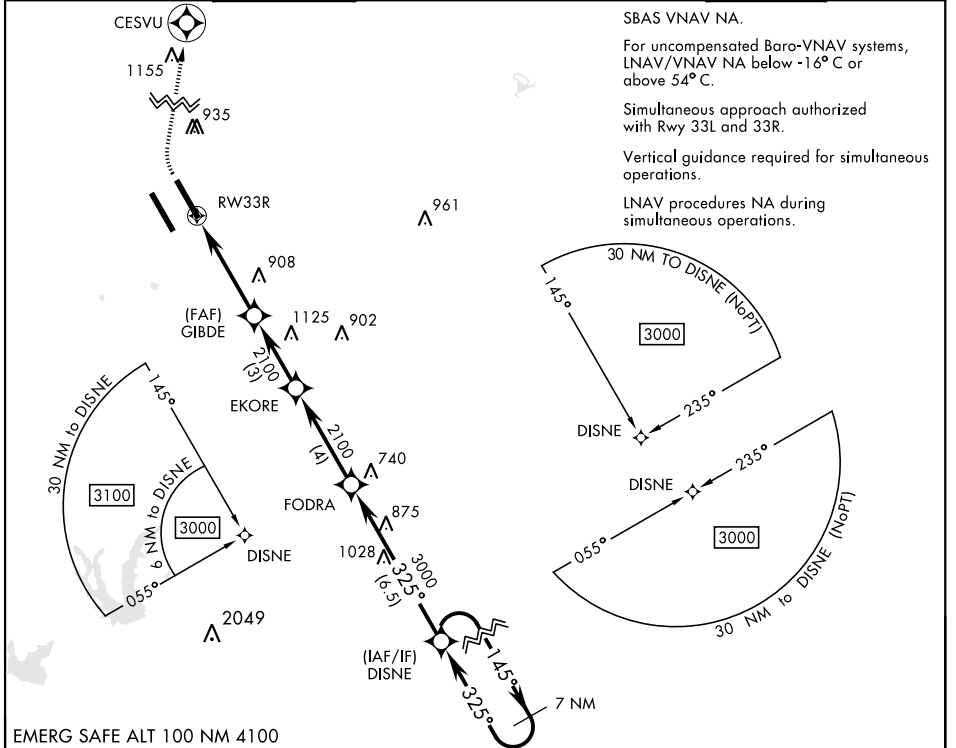
RNP APCH - GPS.

* When ALS inop, increase vis to 1 1/4 miles.
 ** When ALS inop, increase CAT AB RVR to 55 and vis to 1 mile,
 CAT CDE vis to 1 3/8 miles.
 *** Circling not authorized SW of Rwy 15L-33R.



MISSED APPROACH: Climb to 1500 then climbing right turn to 3000 direct CESVU. Expect ATC instructions.

ATIS ★ 290.525	SAN ANTONIO APP CON 128.05 318.1	RANDOLPH TOWER ★ 128.25 294.7	RANDOLPH GND CON 119.65 275.8	CLNC DEL (RWY 15L-33R) 338.35	HANGOVER ATIS ★ 327.8	HANGOVER TOWER ★ 120.5 291.1	HANGOVER GND CON 124.75 353.75
--------------------------	--	---	---	---	---------------------------------	--	--



SBAS VNAV NA.
 For uncompensated Baro-VNAV systems, LNAV/VNAV NA below -16° C or above 54° C.
 Simultaneous approach authorized with Rwy 33L and 33R.
 Vertical guidance required for simultaneous operations.
 LNAV procedures NA during simultaneous operations.

SC-3, 15 JUL 2021 to 12 AUG 2021

SC-3, 15 JUL 2021 to 12 AUG 2021

1500 3000 CESVU ↑ LNAV only	VGSI and RNAV glidepath not coincident (VGSI Angle 3.00/TCH 42).	ELEV 761 TDZE 733																								
RWY 33R 4.2 NM 1.4 NM to RWY 33R	FODRA DISNE 3000 3000 3000 GS 3.00° TCH 53																									
<table border="1"> <tr> <th>CATEGORY</th> <th>A</th> <th>B</th> <th>C</th> <th>D</th> <th>E</th> </tr> <tr> <td>LNAV/VNAV DA*</td> <td colspan="2">1079/30</td> <td>346</td> <td colspan="2">(400-5%)</td> </tr> <tr> <td>LNAV MDA**</td> <td>1200/24</td> <td>467 (500-1/2)</td> <td>1200/50</td> <td>467</td> <td>(500-1)</td> </tr> <tr> <td>CIRCLING***</td> <td>1200-1 439 (500-1)</td> <td>1220-1 459 (500-1)</td> <td>1260-1 1/2 499 (500-1 1/2)</td> <td>1800-3</td> <td>1039 (1100-3)</td> </tr> </table>	CATEGORY	A	B	C	D	E	LNAV/VNAV DA*	1079/30		346	(400-5%)		LNAV MDA**	1200/24	467 (500-1/2)	1200/50	467	(500-1)	CIRCLING***	1200-1 439 (500-1)	1220-1 459 (500-1)	1260-1 1/2 499 (500-1 1/2)	1800-3	1039 (1100-3)	HIRL all rwys ALS Rwy 15L nstd len 2100'	
CATEGORY	A	B	C	D	E																					
LNAV/VNAV DA*	1079/30		346	(400-5%)																						
LNAV MDA**	1200/24	467 (500-1/2)	1200/50	467	(500-1)																					
CIRCLING***	1200-1 439 (500-1)	1220-1 459 (500-1)	1260-1 1/2 499 (500-1 1/2)	1800-3	1039 (1100-3)																					

RNAV (GPS) RWY 33R