

UNIVERSAL CITY, TEXAS

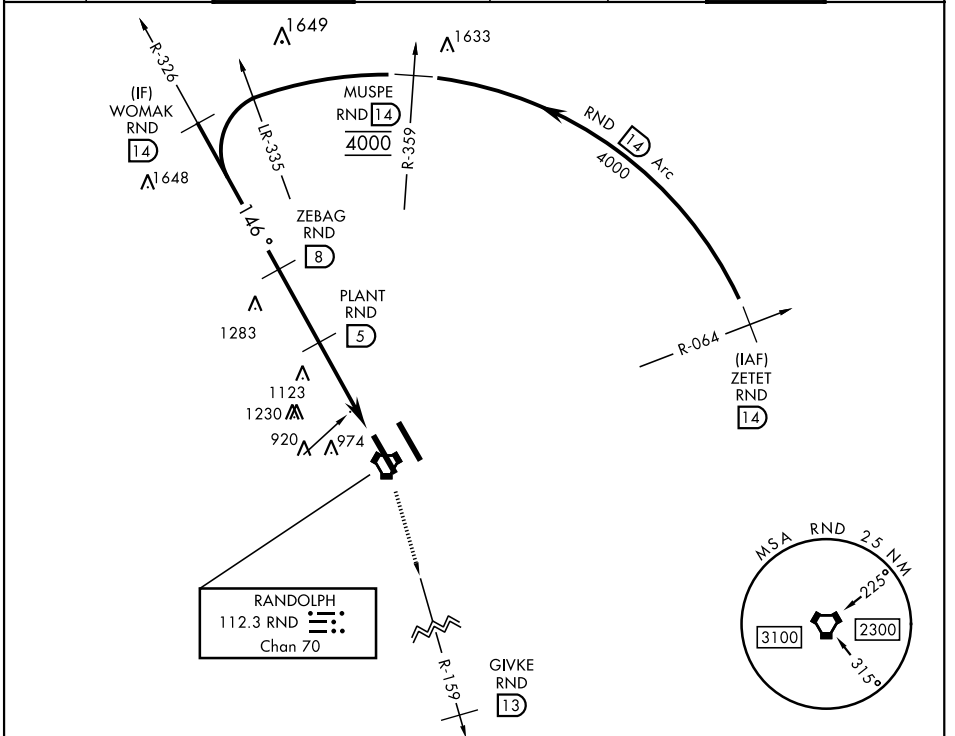
# TACAN RWY 15R

VORTAC RND <b>112.3</b> Chan <b>70</b>	APCH CRS <b>146°</b>	Rwy Idg TDZE <b>8352</b> <b>761</b> Arprt Elev <b>761</b>
----------------------------------------------	-------------------------	--------------------------------------------------------------------

AL-341 [USAF]

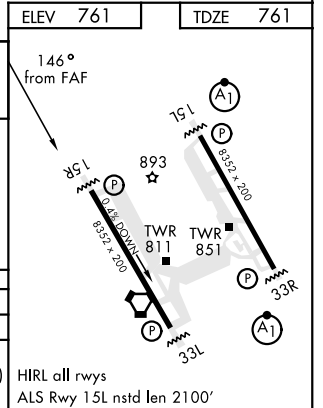
RANDOLPH AFB (KRND)

RADAR required.		MISSED APPROACH: Climb to 3000 out RND VORTAC R-159 to 13 DME (GIVKE). Expect ATC instructions.					
* Circling not authorized NE of Rwy 15R-33L.							
ATIS ★ <b>290.525</b>	SAN ANTONIO APP CON <b>128.05 318.1</b>	RANDOLPH TOWER ★ <b>128.25 294.7</b>	RANDOLPH GND CON <b>119.65 275.8</b>	CLNC DEL (RWY 15L-33R) <b>338.35</b>	HANGOVER ATIS ★ <b>327.8</b>	HANGOVER TOWER ★ <b>120.5 291.1</b>	HANGOVER GND CON <b>124.75 353.75</b>



EMERG SAFE ALT 100 NM 4100

	ELEV <b>761</b>	TDZE <b>761</b>			
	WOMAK RND <b>14</b> 4000	ZEBAG RND <b>8</b> 3000	PLANT RND <b>5</b> 2100	HUNOR RND <b>1.5</b> 1500	GIVKE RND <b>13</b> 3000
CATEGORY	A	B	C	D	E
S-15R	1380/55	619 (700-1)	1380-1 3/4	619	(700-1 3/4)
CIRCLING*	1380-1	619 (700-1)	1500-2 739 (800-2)	1800-3	1039 (1100-3)



UNIVERSAL CITY, TEXAS  
Amdt 1 28JAN21

29°32'N-98°17'W

RANDOLPH AFB (KRND)

# TACAN RWY 15R

SC-3, 15 JUL 2021 to 12 AUG 2021

SC-3, 15 JUL 2021 to 12 AUG 2021