

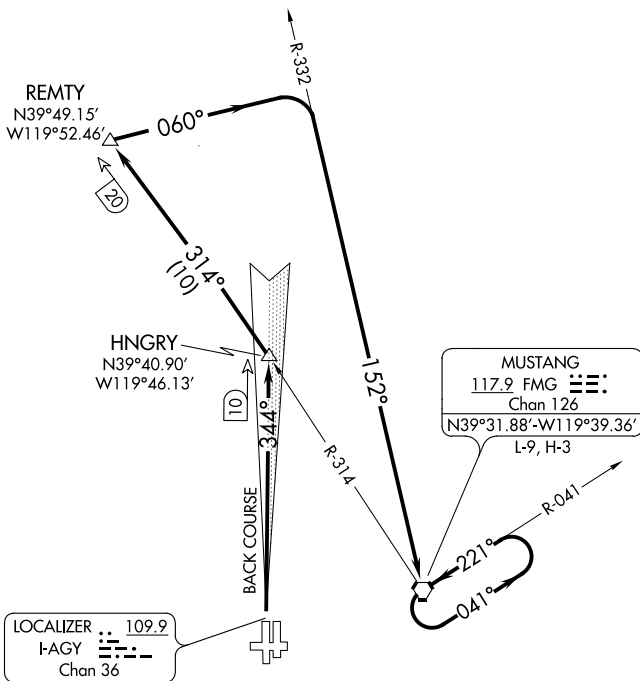
HUNGRY THREE DEPARTURE

AL-346 (FAA)

RENO/TAHOE INTL (RNO)
RENO, NEVADA

D-ATIS
 135.8 363.0
 CLNC DEL
 124.9 370.85
 CPDLC
 GND CON
 121.9 348.6
 RENO TOWER
 118.7 257.8
 NORCAL DEP CON
 126.3 353.9

**TOP ALTITUDE:
10000**



SW-4, 15 JUL 2021 to 12 AUG 2021

SW-4, 15 JUL 2021 to 12 AUG 2021

TAKEOFF MINIMUMS

- Rwy 7: NA- obstacles
- Rwys 16L, 16R, 25: NA-ATC.
- Rwy 34L: Standard with minimum climb of 315' per NM to 8400.
- Rwy 34R: Standard with minimum climb of 480' per NM to 8400, or 500-1½ with minimum climb of 315' per NM to 8400.

NOTE: DME required.

NOTE: Chart not to scale.



DEPARTURE ROUTE DESCRIPTION

TAKEOFF RUNWAYS 34L/R: Climb to 10000 or assigned altitude via I-AGY localizer north course to HNGRY INT/I-AGY 10 DME, and intercept FMG R-314 to REMTY/FMG 20 DME, and right turn heading 060° to intercept FMG R-332 to FMG VORTAC. Climb in FMG holding pattern to depart FMG VORTAC at or above MEA/MCA for route of flight. Expect clearance to requested altitude five minutes after departure.

HUNGRY THREE DEPARTURE