

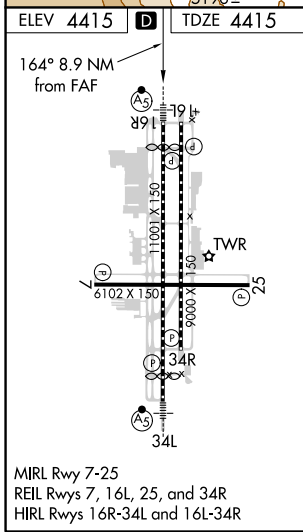
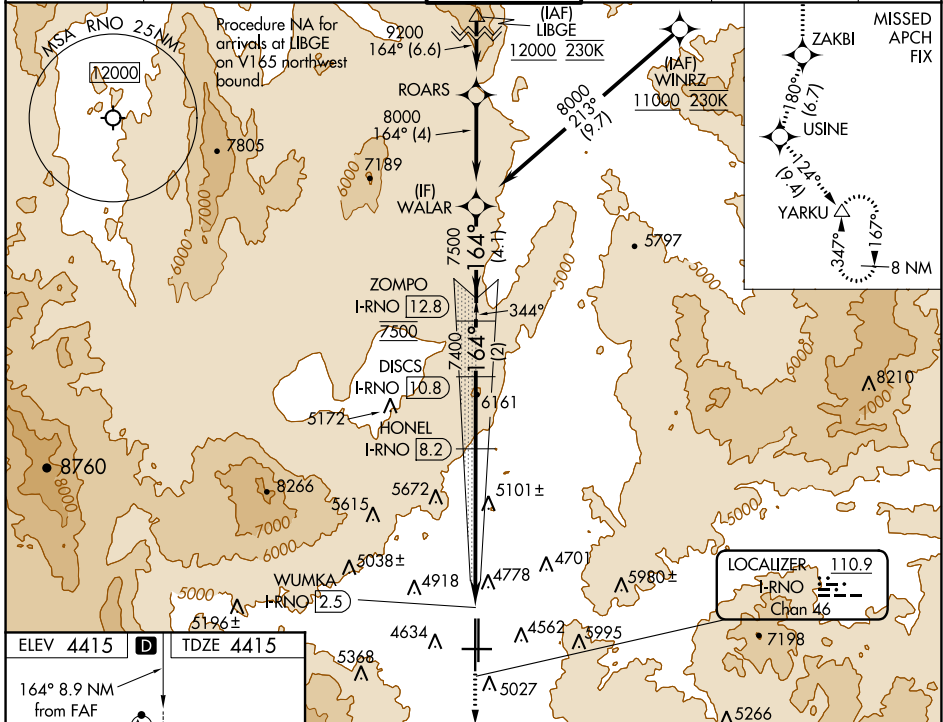
LOC/DME I-RNO 110.9 Chan 46	APP CRS 164°	Rwy Idg 1001 TDZE 4415 Apt Elev 4415
---	------------------------	---

ILS X or LOC X RWY 16R

RENO/TAHOE INTL (RNO)

<p>⚠ DME/DME RNP-0.3 NA. RNAV 1-GPS required. DME required. Circling Rwy 7 NA at night. # For inop MALSRS, increase S-ILS 16R all Cats visibility to 2 1/2 mile. † RVR 1800 authorized with use of FD or AP or HUD to DA.</p>	<p>MALSRS</p>	<p>MISSED APPROACH: Climb to 13000 on the RNAV missed approach route to YARKU and hold, continue climb-in-hold to 13000. † Missed approach requires minimum climb of 390 feet per NM to 8000.</p>

D-ATIS 135.8 363.0	NORCAL APP CON 119.2 279.55 126.3 353.9	RENO TOWER 118.7 257.8	GND CON 121.9 348.6	CLNC DEL 124.9 370.85	CPDLC
------------------------------	---	----------------------------------	-------------------------------	---------------------------------	-------



ELEV 4415	D	TDZE 4415		
164° 8.9 NM from FAF				
13000	ZAKBI	USINE	YARKU	<p>VGSI and ILS glidepath not coincident (VGSI Angle 3.06/TCH 77).</p>
	tr 180°	tr 180°	tr 124°	WALAR
* LOC only.				
	WUMKA I-RNO [2.5]	I-RNO [4.7]	HONEL I-RNO [8.2]	DISCS I-RNO [10.8]
			ZOMPO I-RNO [12.8]	
			7400	8000
			6540*	7400
			7500	
			0.6	2.2 NM
			3.5 NM	2.6 NM
			2 NM	4.1 NM
				GS 3.10° TCH 59

CATEGORY	A	B	C	D
S-ILS 16R †		4615/24	200 (200-1/2)	
S-ILS 16R #		5138-1 7/8	723 (800-1 7/8)	
S-LOC 16R	5420/40 1005 (1100-3/4)	5420/55 1005 (1100-1)	5420-2 1/2	1005 (1100-2 1/2)
C CIRCLING	5420-1 1/4 1005 (1100-1 1/4)	5420-1 1/2 1005 (1100-1 1/2)	6480-3	2065 (2100-3)

SW-4, 15 JUL 2021 to 12 AUG 2021

SW-4, 15 JUL 2021 to 12 AUG 2021