


ILS Z or LOC Z RWY 16R

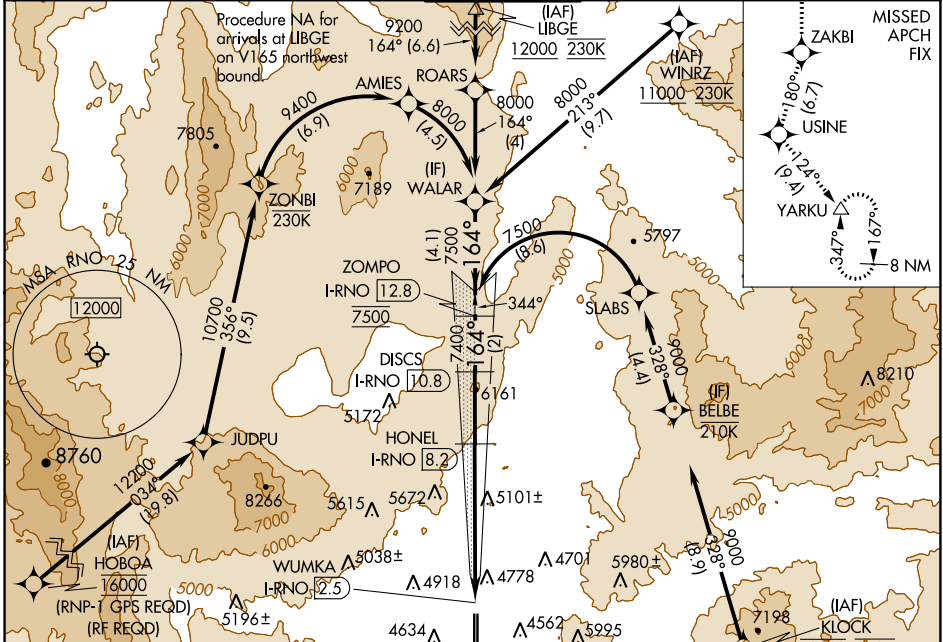
RENO/TAHOE INTL (RNO)

LOC/DME I-RNO 110.9 Chan 46	APP CRS 164°	Rwy Idg 1001	TDZE 4415
		Apt Elev 4415	

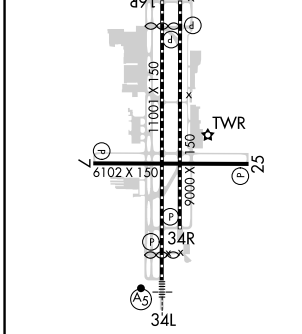
⚠ Circling Rwy 7 NA at night. DME/DME RNP-0.3 NA. DME required. RNAV 1-GPS required.
 # For enp MALSR, increase S-ILS 16R all Cats visibility to 2 1/2 mile.
 † RVR 1800 authorized with use of FD or AP or HUD to DA.


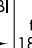
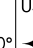
MALS

MISSED APPROACH: Climb to 13000 on the RNAV missed approach route to YARKU and hold, continue climb-in-hold to 13000.
 † Missed approach requires a minimum climb of 390 feet per NM to 8000.

D-ATIS 135.8 363.0	NORCAL APP CON 119.2 279.55 126.3 353.9	RENO TOWER 118.7 257.8	GND CON 121.9 348.6	CLNC DEL 124.9 370.85	CPDLC
------------------------------	---	----------------------------------	-------------------------------	---------------------------------	-------



ELEV 4415	D TDZE 4415
-----------	--------------------



13000	ZAKBI	USINE	YARKU	VGSI and ILS glidepath not coincident (VGSI Angle 3.06/TCH 77).		
↑				DISCS	ZOMPO	WALAR
	tr 180°	tr 124°		I-RNO [10.8]	I-RNO [12.8]	
See planview for multiple IF locations.				HONEL		
	*I-RNO [4.7]	I-RNO [8.2]	7400			
	WUMKA		6540*			
	I-RNO [2.5]		7400			
		LOC only,*				
	0.6	2.2 NM	3.5 NM	2.6 NM	2 NM	4.1 NM

CATEGORY	A	B	C	D
S-ILS 16R †		4615/24	200 (200-1/2)	
S-ILS 16R #		5138-1 7/8	723 (800-1 7/8)	
S-LOC 16R	5420/40 1005 (1100-3/4)	5420/55 1005 (1100-1)	5420-2 1/2	1005 (1100-2 1/2)
C CIRCLING	5420-1 1/4 1005 (1100-1 1/4)	5420-1 1/2 1005 (1100-1 1/2)	6480-3	2065 (2100-3)

MIRL Rwy 7-25
 REIL Rwy 7, 16L, 25, and 34R
 HIRL Rwy 16R-34L and 16L-34R

SW-4, 15 JUL 2021 to 12 AUG 2021

SW-4, 15 JUL 2021 to 12 AUG 2021