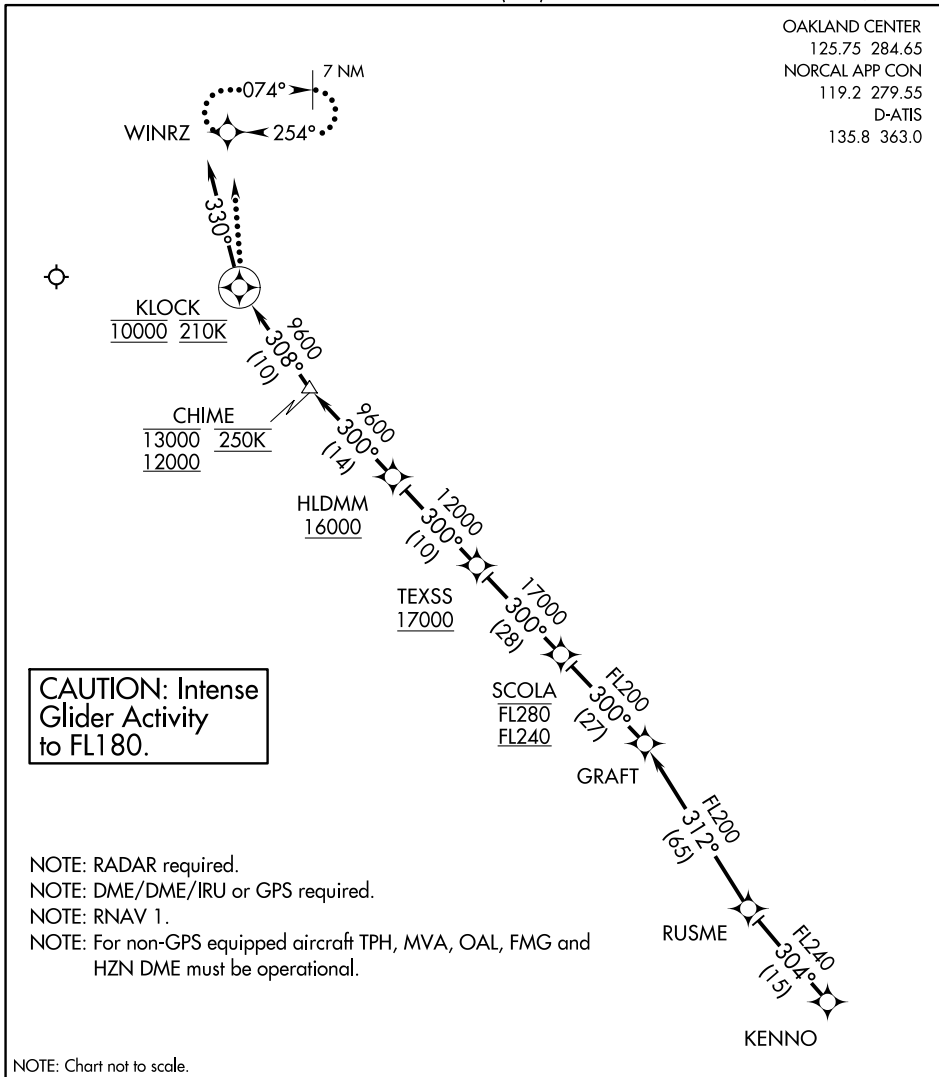


OAKLAND CENTER
 125.75 284.65
 NORCAL APP CON
 119.2 279.55
 D-ATIS
 135.8 363.0



ARRIVAL ROUTE DESCRIPTION

From KENNO on track 304° to RUSME, then as depicted to cross KLOCK at 10000' at 210K, then on heading 330°. Rwy 16L/16R expect RADAR vectors to final approach course.

LOST COMMUNICATIONS:

At KLOCK, turn right direct to WINRZ and hold, maintain 10000'.

SW-4, 15 JUL 2021 to 12 AUG 2021

SW-4, 15 JUL 2021 to 12 AUG 2021