

# PVINE THREE DEPARTURE (RNAV)

AL-346 (FAA)

RENO/TAHOE INTL (RNO)  
RENO, NEVADA

D-ATIS  
135.8 363.0  
CLNC DEL  
124.9 370.85  
CPDLC  
GND CON  
121.9 348.6  
RENO TOWER  
118.7 257.8  
NORCAL DEP CON  
119.2 279.55 (RWY 16L/R)  
126.3 353.9 (RWY 34L/R)

**TOP ALTITUDE:  
FL190**

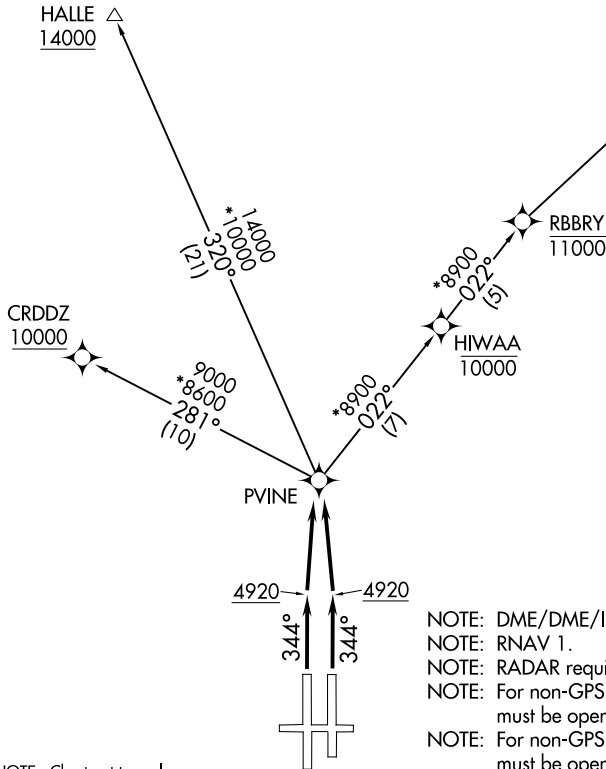
### TAKEOFF MINIMUMS

Rwys 7, 25, 16L/R: NA - ATC.

Rwy 34L: Standard with minimum climb of 383' per NM to 12000.

Rwy 34R: 400-1½ with minimum climb of 383' per NM to 12000, or standard with minimum climb of 411' per NM to 4900, then minimum climb of 383' per NM to 12000.

PYGOW  
17000



- NOTE: DME/DME/IRU or GPS required.
- NOTE: RNAV 1.
- NOTE: RADAR required for non-GPS equipped aircraft.
- NOTE: For non-GPS equipped aircraft, FMG and SWR must be operational for HALLE transition.
- NOTE: For non-GPS equipped aircraft, FMG and HZN must be operational for PYGOW transition.

NOTE: Chart not to scale.

### DEPARTURE ROUTE DESCRIPTION

TAKEOFF RUNWAYS 34L/R: Climb heading 344° to 4920, then direct PVINE, thence. . . .

. . . .Maintain FL190 or assigned altitude. Expect filed altitude 5 minutes after departure.

CRDDZ TRANSITION (PVINE3.CRDDZ)

HALLE TRANSITION (PVINE3.HALLE)

PYGOW TRANSITION (PVINE3.PYGOW)

# PVINE THREE DEPARTURE (RNAV)

SW-4, 15 JUL 2021 to 12 AUG 2021

SW-4, 15 JUL 2021 to 12 AUG 2021