

# RNAV (RNP) Z RWY 16L

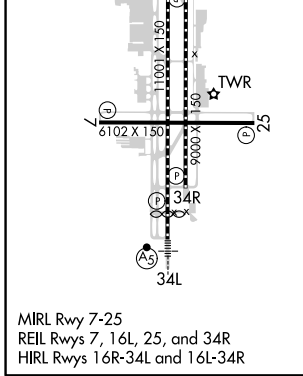
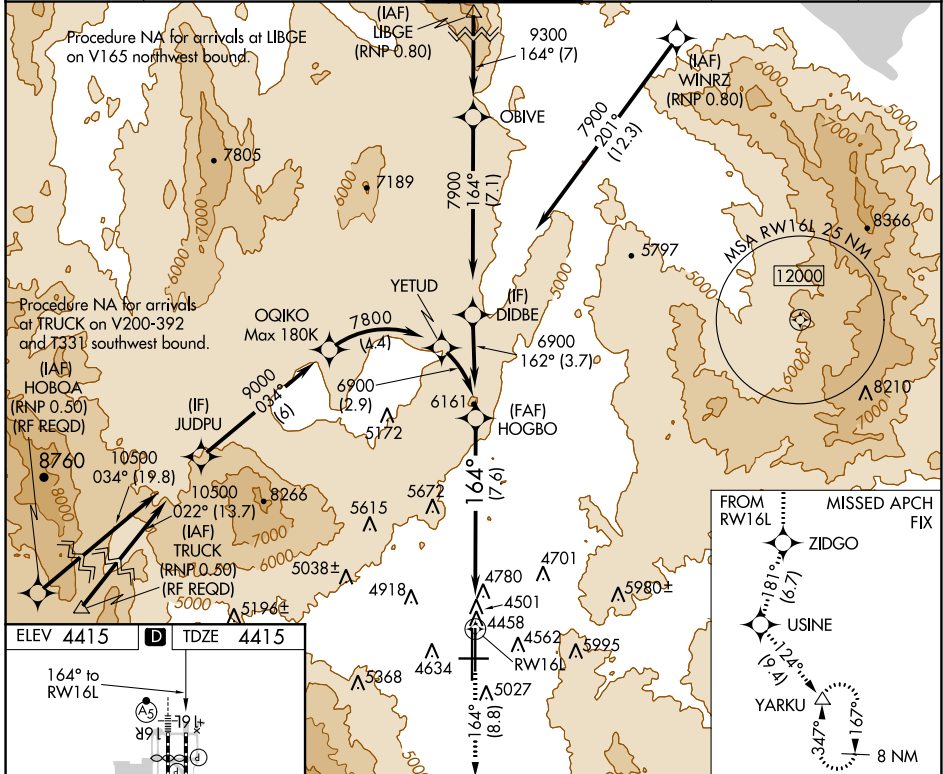
RENO/TAHOE INTL (RNO)

APP CRS	Rwy Idg	<b>9000</b>
<b>164°</b>	TDZE	<b>4415</b>
	Apt Elev	<b>4415</b>

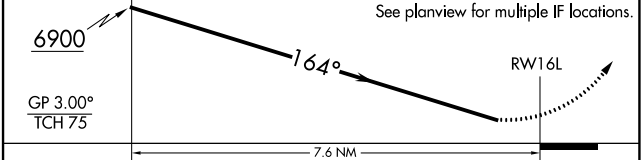
**⚠** For uncompensated Baro-VNAV systems, procedure NA below -16°C (4°F) or above 54°C (130°F). When VGSI inop, procedure NA at night. GPS required. \*Missed approach requires a minimum climb of 259 feet per NM to 7000.

MISSED APPROACH: Climb to 13000 on track 164° to ZIDGO and on track 181° to USINE and on track 124° to YARKU and hold, continue climb-in-hold to 13000.

D-ATIS	NORCAL APP CON	RENO TOWER	GND CON	CLNC DEL	CPDLC
<b>135.8 363.0</b>	<b>119.2 279.55 126.3 353.9</b>	<b>118.7 257.8</b>	<b>121.9 348.6</b>	<b>124.9 370.85</b>	



ELEV 4415	<b>D</b>	TDZE 4415
-----------	----------	-----------



CATEGORY	A	B	C	D
RNP 0.12 DA*	4796-1 1/8	381 (400-1 1/8)		NA
RNP 0.30 DA	5133-2 1/2	718 (800-2 1/2)		NA

## AUTHORIZATION REQUIRED

SW-4, 15 JUL 2021 to 12 AUG 2021

SW-4, 15 JUL 2021 to 12 AUG 2021