

# RNAV (RNP) Z RWY 16R

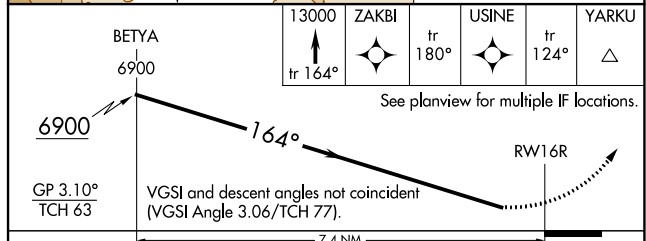
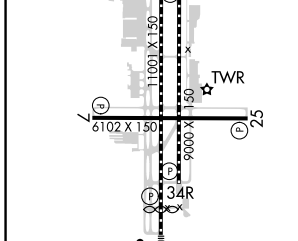
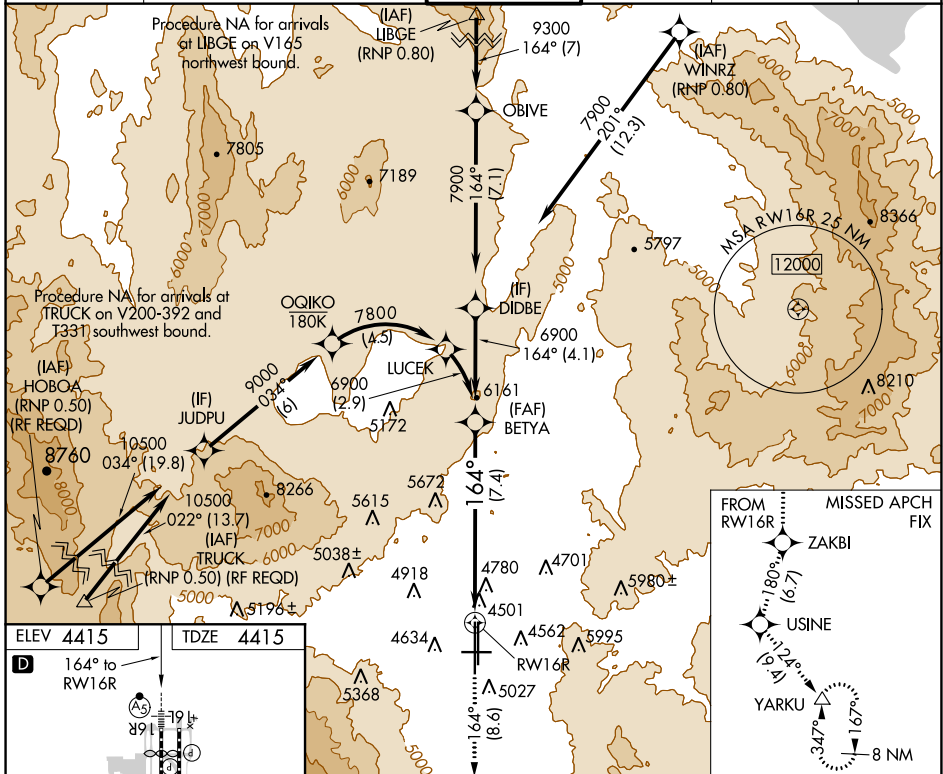
RENO/TAHOE INTL (RNO)

APP CRS	Rwy Idg	<b>10001</b>
<b>164°</b>	TDZE	<b>4415</b>
	Apt Elev	<b>4415</b>

**⚠** For uncompensated Baro-VNAV systems, procedure NA below -16°C (4°F) or above 54°C (130°F). For inoperative MALSR, increase RNP 0.17 all Cats visibility to 1¾ and RNP 0.30 all Cats visibility to 2½. GPS required. \*Missed approach requires a minimum climb of 260 feet per NM to 7000.

**MALSR**  
 MISSED APPROACH: Climb to 13000 on track 164° to ZAKBI and on track 180° to USINE and on track 124° to YARKU and hold, continue climb-in-hold to 13000.

D-ATIS	NORCAL APP CON	RENO TOWER	GND CON	CLNC DEL	CPDLC
<b>135.8 363.0</b>	<b>119.2 279.55 126.3 353.9</b>	<b>118.7 257.8</b>	<b>121.9 348.6</b>	<b>124.9 370.85</b>	



CATEGORY	A	B	C	D
RNP 0.17 DA*	4973-1¾	558 (600-1¾)		NA
RNP 0.30 DA	5142-1¾	727 (800-1¾)		NA

MIRL Rwy 7-25  
 REIL Rwys 7, 16L, 25, and 34R  
 HIRL Rwys 16R-34L and 16L-34R

**AUTHORIZATION REQUIRED**

SW-4, 15 JUL 2021 to 12 AUG 2021

SW-4, 15 JUL 2021 to 12 AUG 2021