

APP CRS	Rwy Idg	<b>9000</b>
<b>344°</b>	TDZE	<b>4408</b>
	Apt Elev	<b>4415</b>

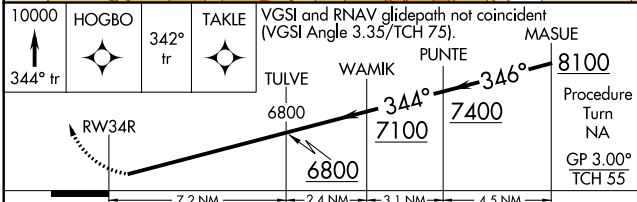
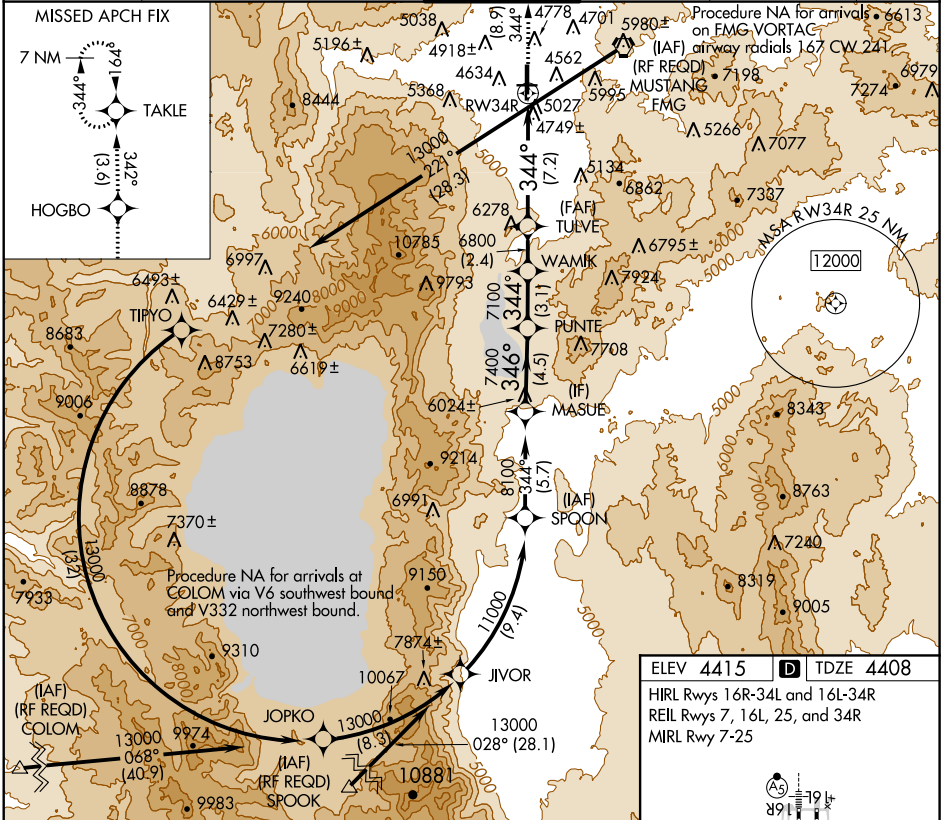
# RNAV (RNP) Z RWY 34R

RENO/TAHOE INTL (RNO)

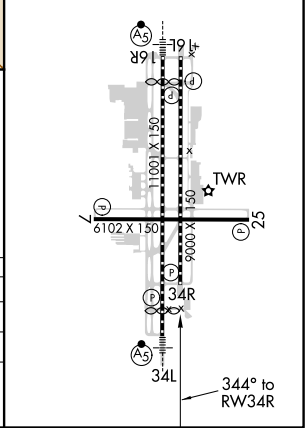
**NA** GPS required. For uncompensated Baro-VNAV systems, procedure NA below -13°C (8°F) or above 40°C (105°F).

MISSED APPROACH: Climb to 10000 via 344° track to HOGBO and 342° track to TAKLE and hold, continue climb-in-hold to 10000.

D-ATIS	NORCAL APP CON			RENO TOWER	GND CON	CLNC DEL	CPDLC
<b>135.8 363.0</b>	<b>119.2</b>	<b>279.55</b>	<b>126.3 353.9</b>	<b>118.7 257.8</b>	<b>121.9 348.6</b>	<b>124.9 370.85</b>	



ELEV 4415	<b>D</b> TDZE 4408
HIRL Rwys 16R-34L and 16L-34R	
REIL Rwys 7, 16L, 25, and 34R	
MIRL Rwy 7-25	



CATEGORY	A	B	C	D
RNP 0.15 DA		5173-2¾	765 (800-2¾)	
RNP 0.30 DA		5344-4	936 (1000-4)	

**AUTHORIZATION REQUIRED**

SW-4, 15 JUL 2021 to 12 AUG 2021

SW-4, 15 JUL 2021 to 12 AUG 2021