

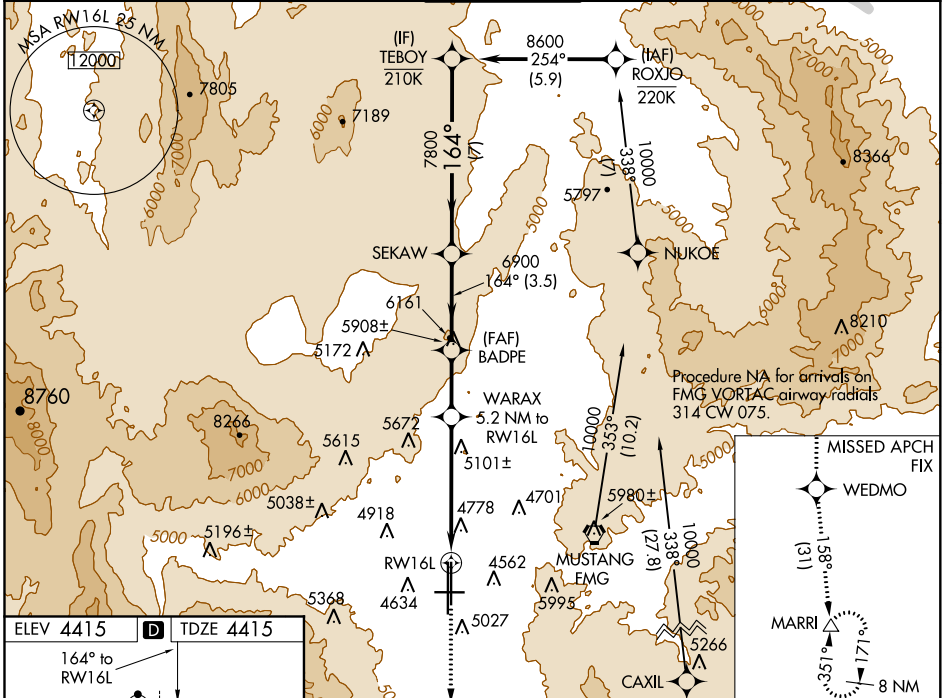
WAAS CH 72909 W16A	APP CRS 164°	Rwy Idg TDZE Apt Elev	9000 4415 4415
--	------------------------	-----------------------------	---

RNAV (GPS) X RWY 16L

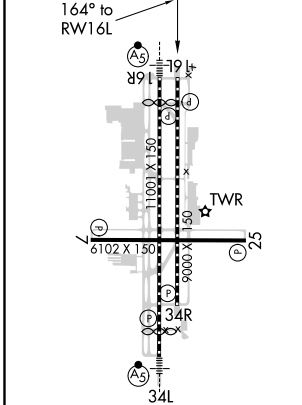
RENO/TAHOE INTL (RNO)

RNP APCH.		MISSED APPROACH: Climb to 13000 direct WEDMO and on track 158° to MARRI and hold.	
<p>▼ Circling Rwy 7 NA at night. Rwy 16L helicopter visibility reduction below ¾ SM NA. For uncompensated Baro-VNAV systems, LNAV/VNAV NA below -9°C or above 54°C.</p>			

D-ATIS 135.8 363.0	NORCAL APP CON 119.2 279.55 126.3 353.9	RENO TOWER 118.7 257.8	GND CON 121.9 348.6	CLNC DEL 124.9 370.85	CPDLC
------------------------------	---	----------------------------------	-------------------------------	---------------------------------	-------



ELEV 4415	D	TDZE 4415
------------------	----------	------------------



VGSi and RNAV glidepath not coincident (VGSi Angle 3.00/TCH 75).			
TEBOY	SEKAW	BADPE	WARAX 5.2 NM to RWY 16L *2.7 NM to RWY 16L
8600	7800	6900	*6140
GP 3.00° TCH 55	7 NM	3.5 NM	2.4 NM
		2.5 NM	2.7 NM
CATEGORY	A	B	C
LPV DA		5149-2	734 (800-2)
LNAV/VNAV DA		5098-2	683 (700-2)
LNAV MDA	5360-1¼	945 (1000-1¼)	5360-2½ 945 (1000-2½)
C CIRCLING	5360-1¼	945 (1000-1¼)	6460-3 2045 (2100-3)

MIRL Rwy 7-25
REIL Rws 7, 16L, 25, and 34R
HIRL Rws 16R-34L and 16L-34R

SW-4, 15 JUL 2021 to 12 AUG 2021

SW-4, 15 JUL 2021 to 12 AUG 2021