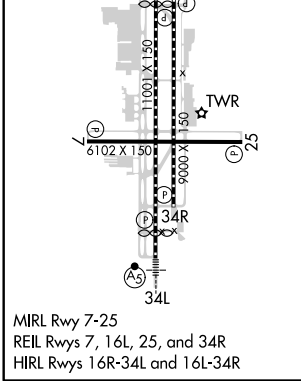
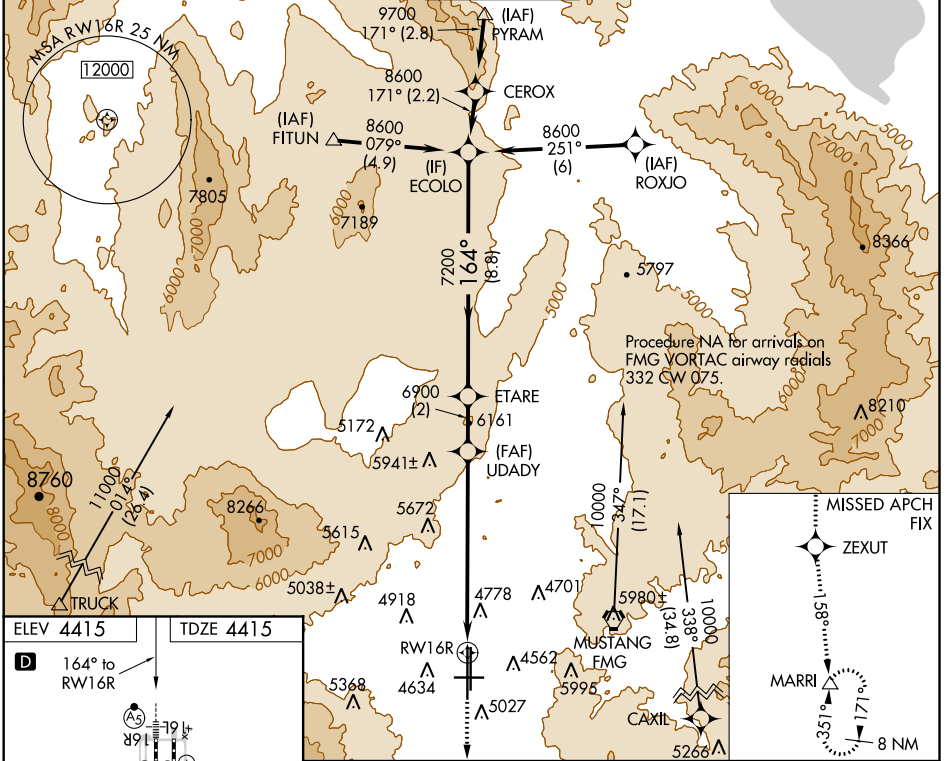


WAAS CH <b>78309</b> <b>W16B</b>	APP CRS <b>164°</b>	Rwy Idg <b>10001</b> TDZE <b>4415</b> Apt Elev <b>4415</b>
--	------------------------	--

# RNAV (GPS) X RWY 16R

RENO/TAHOE INTL (RNO)

RNP APCH.		RENO TOWER		GND CON	CLNC DEL	CPDLC
Inoperative table does not apply to LNAV all Cats. For inoperative MALSR increase LPV all Cats visibility to 2 3/4.		<b>118.7 257.8</b>		<b>121.9 348.6</b>	<b>124.9 370.85</b>	
D-ATIS	NORCAL APP CON					
<b>135.8 363.0</b>	<b>119.2 279.55</b>	<b>126.3 353.9</b>				



VGSi and descent angles not coincident (VGSi Angle 3.06/TCH 77).			
ECOLO	ETARE	UDADY	RWY16R
8600	6900	7200	
164°		158°	
8.8 NM		2 NM	7.2 NM
GP 3.10°			
13000	ZEXUT	tr 158°	MARRI
△			
CATEGORY	A	B	C
LPV DA	5239-2 1/4 824 (900-2 1/4)		
LNAV MDA	6200/60 1785 (1800-1 1/4)	6200-1 1/2 1785 (1800-1 1/2)	6200-3 1785 (1800-3)

SW-4, 15 JUL 2021 to 12 AUG 2021

SW-4, 15 JUL 2021 to 12 AUG 2021