

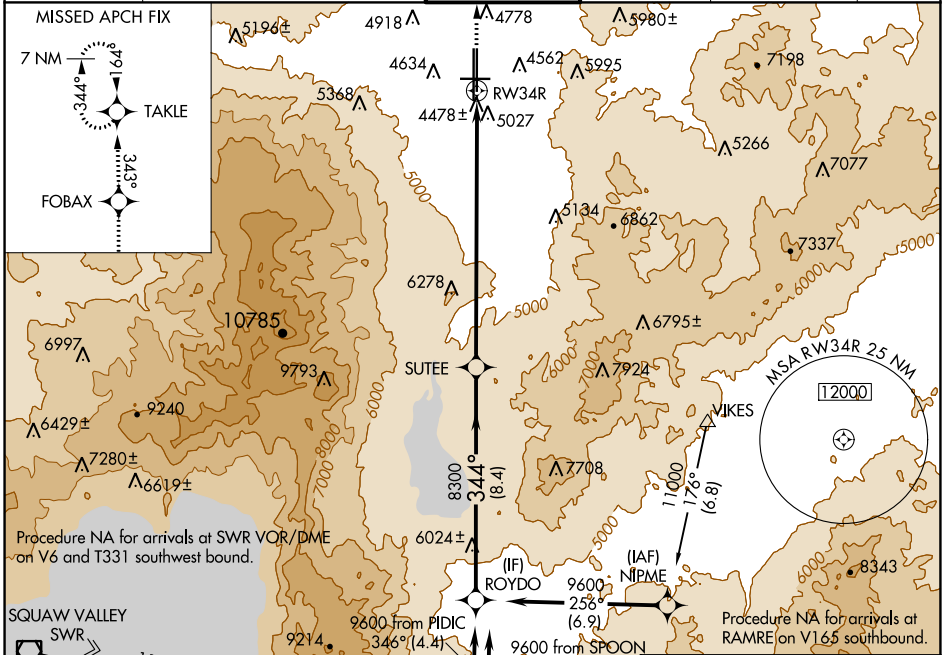
WAAS CH <b>40409</b> <b>W34B</b>	APP CRS <b>344°</b>	Rwy Idg <b>9000</b> TDZE <b>4408</b> Apt Elev <b>4415</b>
--	------------------------	---

# RNAV (GPS) Y RWY 34R

RENO/TAHOE INTL (RNO)

DME/DME RNP-0.3 NA.		MISSED APPROACH: Climb to 10000 direct FOBAX and via 343° track to TAKLE and hold, continue climb-in-hold to 10000.			
---------------------	--	---	--	--	--

D-ATIS <b>135.8 363.0</b>	NORCAL APP CON <b>119.2 279.55 126.3 353.9</b>	RENO TOWER <b>118.7 257.8</b>	GND CON <b>121.9 348.6</b>	CLNC DEL <b>124.9 370.85</b>	CPDLC
------------------------------	---	----------------------------------	-------------------------------	---------------------------------	-------



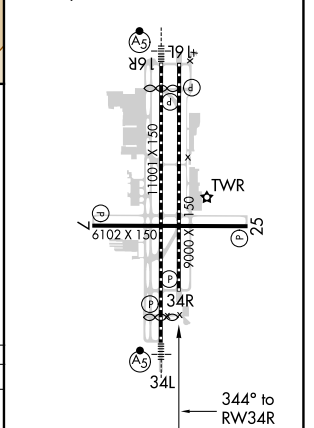
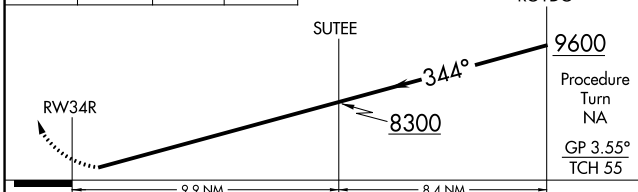
ELEV 4415	<b>D</b> TDZE 4408
HIRL Rwy 16R-34L and 16L-34R	
REIL Rwy 7, 16L, 25, and 34R	
MIRL Rwy 7-25	

Procedure NA for arrivals at SWR VOR/DME on V6 and T331 southwest bound.

Procedure NA for arrivals at RAMRE on V165 southwest bound.

Procedure NA for arrivals at RICHY on V28-113 southwest bound.

10000	FOBAX	343° tr	TAKLE	VGSI and RNAV glidepath not coincident (VGSI Angle 3.35/TCH 75).
-------	-------	---------	-------	--



CATEGORY	A	B	C	D
LPV DA	5043-2	635 (700-2)		NA

SW-4, 15 JUL 2021 to 12 AUG 2021

SW-4, 15 JUL 2021 to 12 AUG 2021