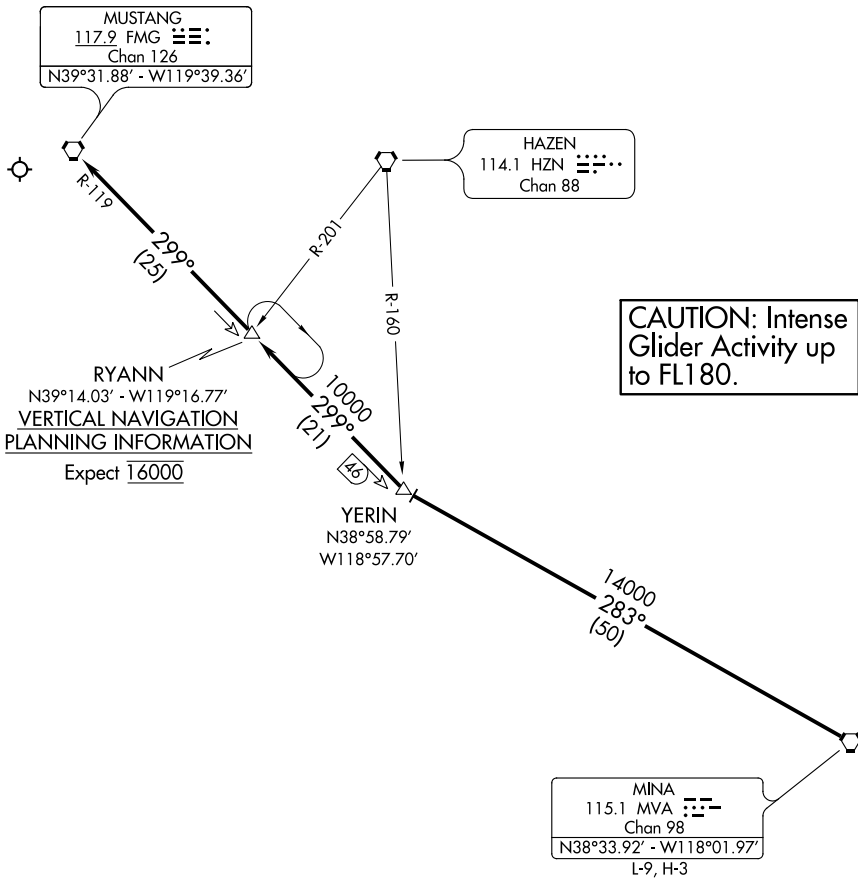


NORCAL APP CON
 119.2 279.55
 D-ATIS
 135.8 363.0



**CAUTION: Intense
 Glider Activity up
 to FL180.**

RYANN
 N39°14.03' - W119°16.77'
VERTICAL NAVIGATION
PLANNING INFORMATION
 Expect 16000

YERIN
 N38°58.79'
 W118°57.70'

MINA
 115.1 MVA
 Chan 98
 N38°33.92' - W118°01.97'
 L-9, H-3

- NOTE: For Runway 16 only.
- NOTE: RADAR Required.
- NOTE: Chart not to scale.

ARRIVAL ROUTE DESCRIPTION

RUNWAY 16: From over MVA VORTAC via MVA R-283 to YERIN INT. Thence via FMG R-119 to FMG VORTAC. Expect RADAR vectors to Runway 16.

SW-4, 15 JUL 2021 to 12 AUG 2021

SW-4, 15 JUL 2021 to 12 AUG 2021