

VORTAC FMG <b>117.9</b> Chan <b>126</b>	APP CRS <b>239°</b>	Rwy Idg TDZE Apt Elev <b>N/A</b> <b>N/A</b> <b>4415</b>
---	------------------------	--

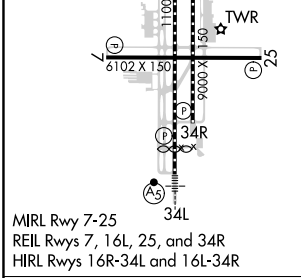
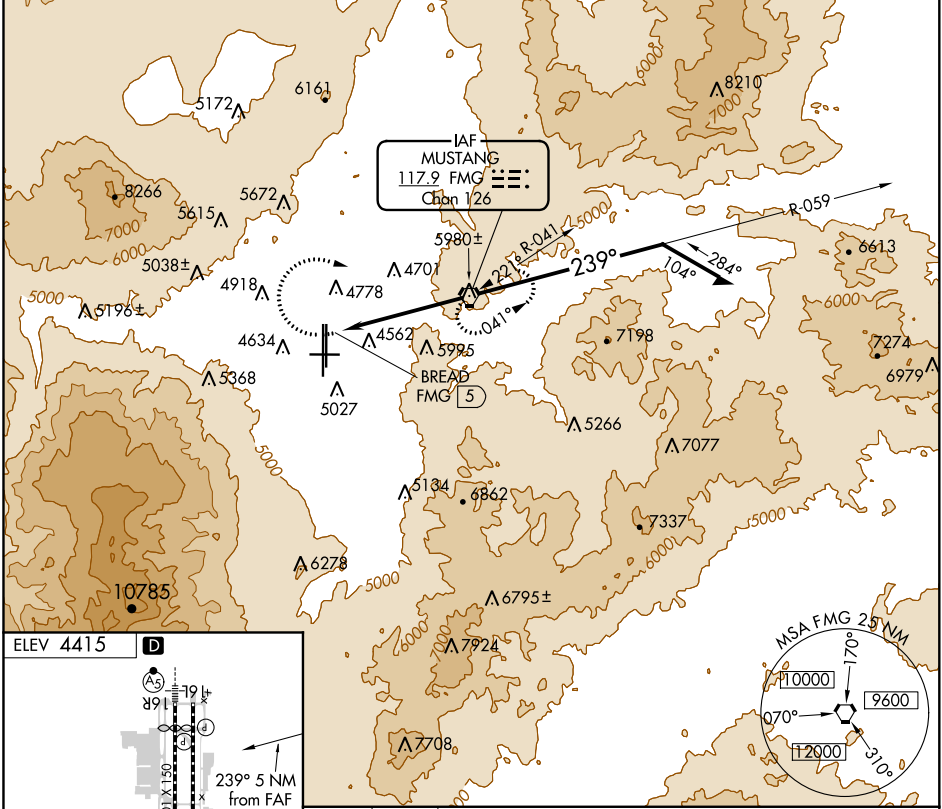
# VOR-D

RENO/TAHOE INTL (RNO)

**⚠** Circling Rwy 7 NA at night.

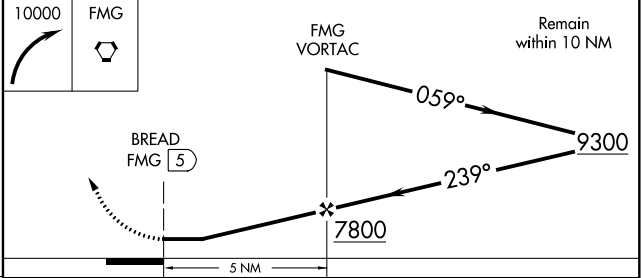
MISSED APPROACH: Climbing right turn to 10000 direct FMG VORTAC and hold, continue climb-in-hold to 10000.

D-ATIS <b>135.8 363.0</b>	NORCAL APP CON <b>119.2 279.55 126.3 353.9</b>	<b>RENO TOWER</b> <b>118.7 257.8</b>	GND CON <b>121.9 348.6</b>	CLNC DEL <b>124.9 370.85</b>	CPDLC
------------------------------	---	---	-------------------------------	---------------------------------	-------



MIRL Rwy 7-25  
REIL Rwy 7, 16L, 25, and 34R  
HIRL Rwy 16R-34L and 16L-34R

FAF to MAP 5 NM					
Knots	60	90	120	150	180
Min:Sec	5:00	3:20	2:30	2:00	1:40



CATEGORY	A	B	C	D
CIRCLING	6000-1¼ 1585 (1600-1¼)	6000-1½ 1585 (1600-1½)	6000-3 1585 (1600-3)	1585 (1600-3)

SW-4, 15 JUL 2021 to 12 AUG 2021

SW-4, 15 JUL 2021 to 12 AUG 2021