

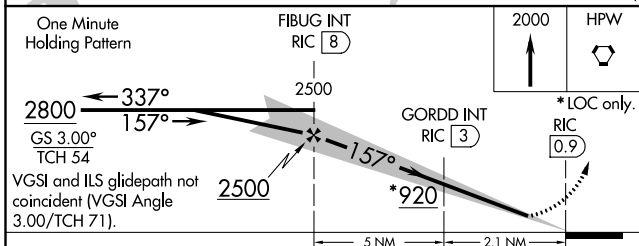
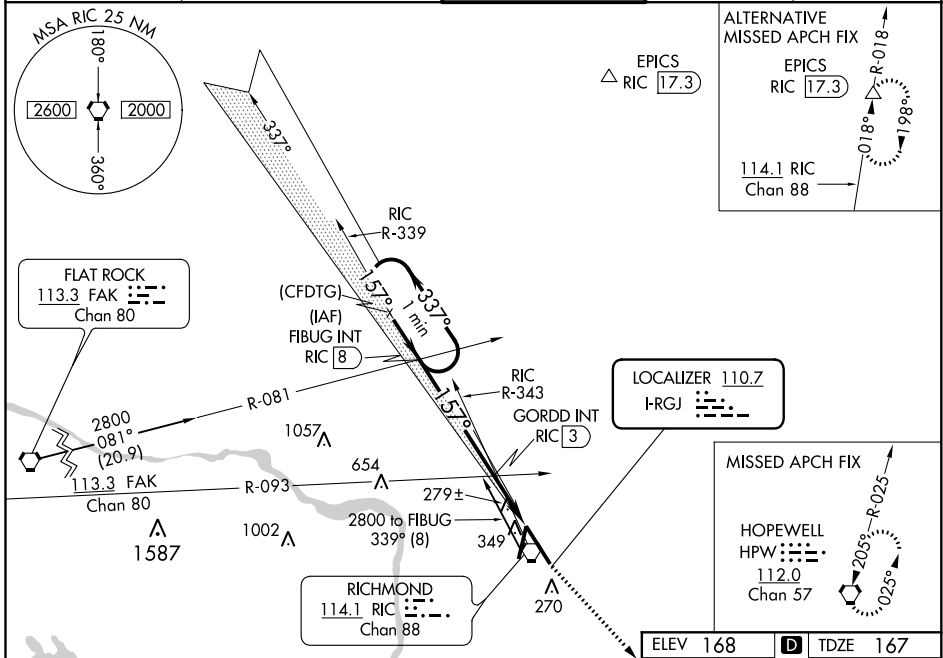
LOC I-RGJ 110.7	APP CRS 157°	Rwy Idg TDZE 167 Apt Elev 168	9003
---------------------------	------------------------	---	-------------

ILS or LOC RWY 16

RICHMOND INTL (RIC)

<p>▽ For inop ALS, increase S-LOC 16 Cats C and D visibility to 2 SM. GORDD Fix Minimums: for inop ALS, increase S-LOC 16 Cats C and D visibility to 1½ SM. **RVR 1800 authorized with use of FD or AP or HUD to DA. % DME from RIC VORTAC.</p>	<p>MALSR</p>	<p>MISSED APPROACH: Climb to 2000 direct HPW VORTAC and hold.</p>
	<p>△</p>	<p>AS</p>

ATIS 119.15 263.025	POTOMAC APP CON 126.4 282.375 (001°-185°) 126.75 307.2 (186°-360°)	RICHMOND TOWER 121.1 257.8	GND CON 121.9 348.6	CLNC DEL 127.55 348.6
-------------------------------	--	--------------------------------------	-------------------------------	---------------------------------



ELEV 168	TDZE 167												
<p>TWR 343</p> <p>157° 7.2 NM from FAF</p> <p>9003 X 1.50</p> <p>6607 X 1.50</p> <p>34</p>													
<p>TDZ/CL Rwy 34</p> <p>HIRL Rlys 2-20 and 16-34</p> <p>REIL Rwy 20</p> <p>FAF to MAP 7.2 NM</p> <table border="1"> <tr> <td>Knots</td> <td>60</td> <td>90</td> <td>120</td> <td>150</td> <td>180</td> </tr> <tr> <td>Min:Sec</td> <td>7:12</td> <td>4:48</td> <td>3:36</td> <td>2:53</td> <td>2:24</td> </tr> </table>		Knots	60	90	120	150	180	Min:Sec	7:12	4:48	3:36	2:53	2:24
Knots	60	90	120	150	180								
Min:Sec	7:12	4:48	3:36	2:53	2:24								

CATEGORY	A	B	C	D
S-ILS 16 **	367/24 200 (200-½)			
S-LOC 16	920/24 753 (800-½)	920/40 753 (800-¾)	920-1¾	753 (800-1¾)
C CIRCLING	920-1 752 (800-1)	920-1¼ 752 (800-1¼)	920-2½	752 (800-2½)
GORDD FIX MINIMUMS %				
S-LOC 16	580/24 413 (500-½)	580/40 413 (500-¾)		
C CIRCLING	660-1 492 (500-1)	700-1½ 532 (600-1½)	720-2 552 (600-2)	

NE-3, 15 JUL 2021 to 12 AUG 2021

NE-3, 15 JUL 2021 to 12 AUG 2021