

(LUCYL6.LUCYL) 19339

AL-347 (FAA)

RICHMOND INTL (RIC)  
RICHMOND, VIRGINIA

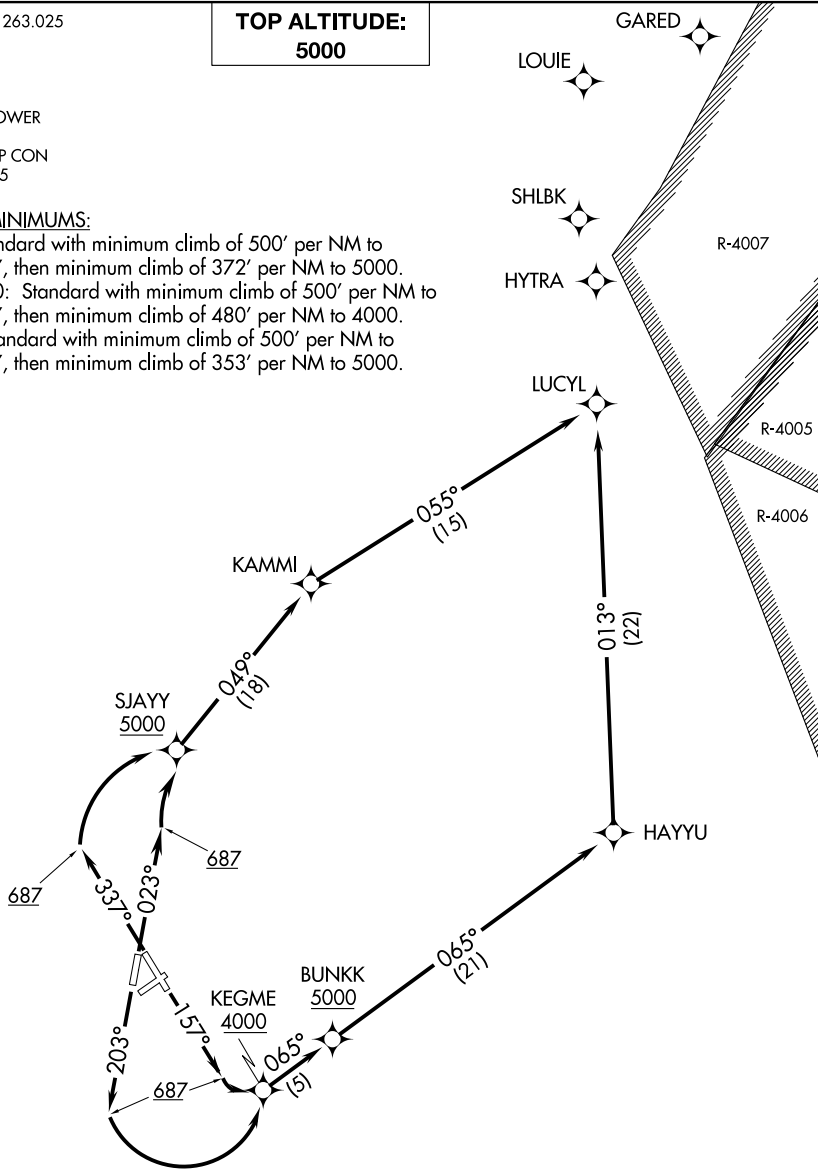
# LUCYL SIX DEPARTURE (RNAV)

ATIS 119.15 263.025  
CLNC DEL  
127.55 348.6  
GND CON  
121.9 348.6  
RICHMOND TOWER  
121.1 257.8  
POTOMAC DEP CON  
126.4 282.375

**TOP ALTITUDE:  
5000**

### TAKEOFF MINIMUMS:

Rwy 2: Standard with minimum climb of 500' per NM to 687, then minimum climb of 372' per NM to 5000.  
Rwys 16, 20: Standard with minimum climb of 500' per NM to 687, then minimum climb of 480' per NM to 4000.  
Rwy 34: Standard with minimum climb of 500' per NM to 687, then minimum climb of 353' per NM to 5000.



NE-3, 15 JUL 2021 to 12 AUG 2021

NE-3, 15 JUL 2021 to 12 AUG 2021

NOTE: RNAV 1.  
NOTE: DME/DME/IRU or GPS required.  
NOTE: RADAR required for non-GPS equipped aircraft.

(NARRATIVE ON FOLLOWING PAGE)

NOTE: Chart not to scale.

# LUCYL SIX DEPARTURE (RNAV)

(LUCYL6.LUCYL) 05DEC19

RICHMOND, VIRGINIA  
RICHMOND INTL (RIC)