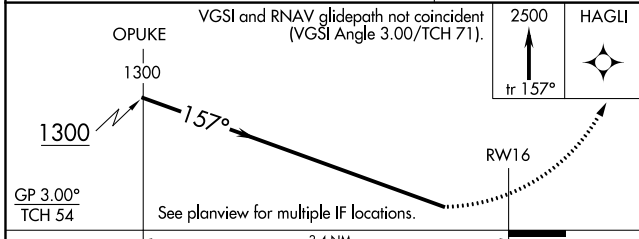
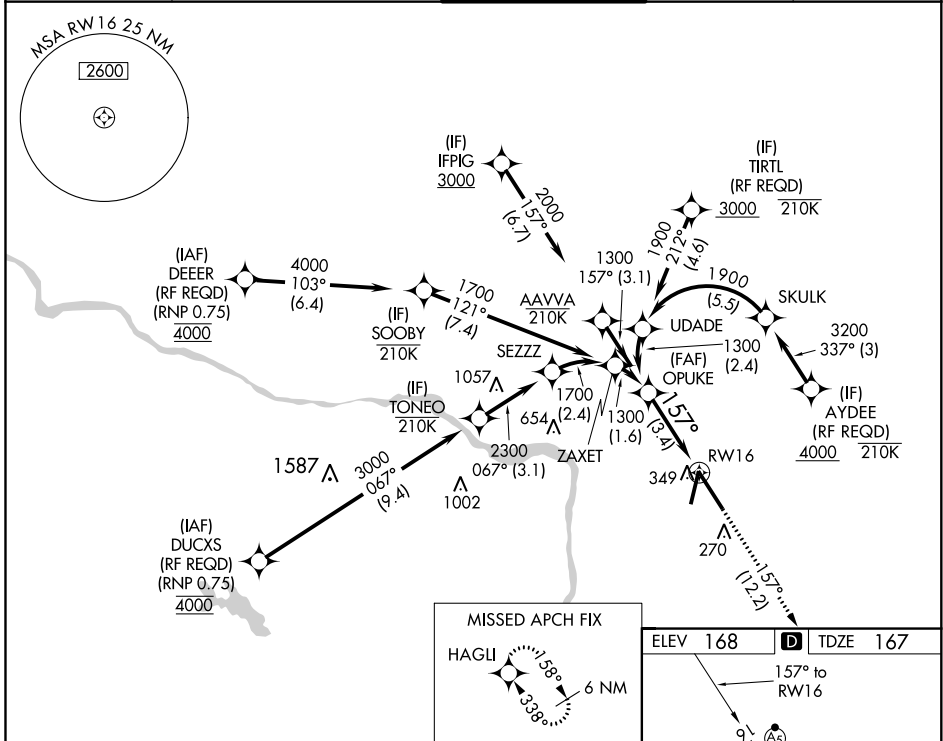


APP CRS	Rwy Idg	9003
157°	TDZE	167
	Apt Elev	168

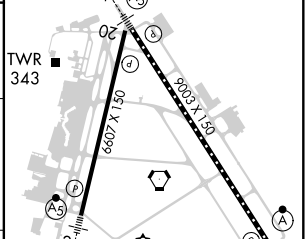
RNAV (RNP) Y RWY 16

RICHMOND INTL (RIC)

RNP AR APCH.		MALSR	MISSED APPROACH: Climb to 2500 on track 157° to HAGLI and hold.	
<p>▼ For uncompensated Baro-VNAV systems, procedure NA below -11°C (13°F) or above 54°C (130°F). For inop ALS, increase RNP 0.11 all Cats visibility to RVR 5500 and RNP 0.30 all Cats visibility to 1½ SM.</p>				
ATIS	POTOMAC APP CON	RICHMOND TOWER	GND CON	CLNC DEL
119.15 263.025	126.4 282.375 (001°-185°) 126.75 307.2 (186°-360°)	121.1 257.8	121.9 348.6	127.55 348.6



ELEV	168	D	TDZE	167
------	-----	---	------	-----



CATEGORY	A	B	C	D
RNP 0.11 DA		506/40	339 (400-¾)	
RNP 0.30 DA		606/50	439 (500-1)	

AUTHORIZATION REQUIRED

TDZ/CL Rwy 34
HIRL Rwy 2-20 and 16-34
REIL Rwy 20

NE-3, 15 JUL 2021 to 12 AUG 2021

NE-3, 15 JUL 2021 to 12 AUG 2021