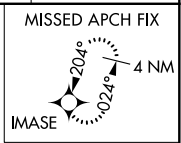
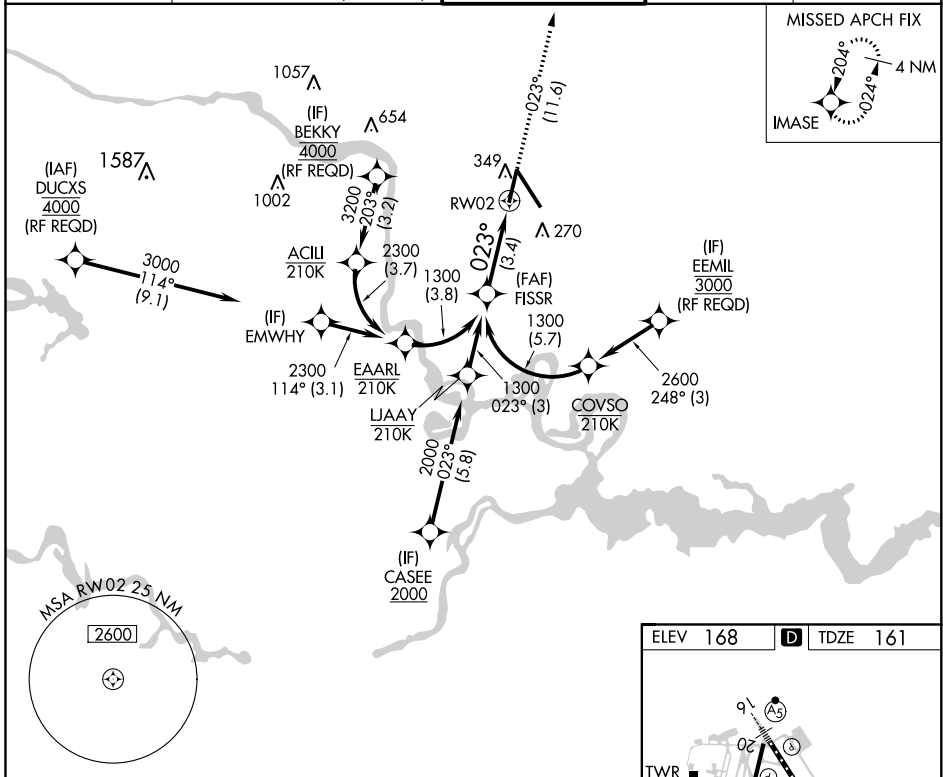


APP CRS	Rwy Idg	6607
023°	TDZE	161
	Apt Elev	168

RNAV (RNP) Y RWY 2

RICHMOND INTL (RIC)

RNP AR APCH.		MALSR 		MISSED APPROACH: Climb to 2100 on track 023° to IMASE and hold.	
▼ For uncompensated Baro-VNAV systems, procedure NA below -11°C (13°F) or above 54°C (130°F). Rwy 2 helicopter visibility reduction below ¾ SM NA. For inop ALS, increase RNP 0.11 all Cats visibility to 1 SM and RNP 0.3 all Cats visibility to 1¼ SM.					
ATIS 119.15 263.025		POTOMAC APP CON 126.4 282.375 (001°-185°) 126.75 307.2 (186°-360°)		RICHMOND TOWER 121.1 257.8	
		GND CON 121.9 348.6		CLNC DEL 127.55 348.6	



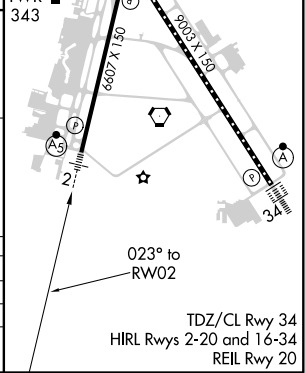
NE-3, 15 JUL 2021 to 12 AUG 2021

NE-3, 15 JUL 2021 to 12 AUG 2021

See planview for multiple IF locations.

	2100	IMASE		
	↑			
	tr 023°			
		RW02		
	3.4 NM			
CATEGORY	A	B	C	D
RNP 0.11 DA		506-¾	345 (400-¾)	
RNP 0.30 DA		595-1	434 (500-1)	

AUTHORIZATION REQUIRED



TDZ/CL Rwy 34
 HIRL Rwy 2-20 and 16-34
 REIL Rwy 20