

APP CRS	Rwy Idg	<b>6607</b>
<b>203°</b>	TDZE	<b>168</b>
	Apt Elev	<b>168</b>

# RNAV (RNP) Y RWY 20

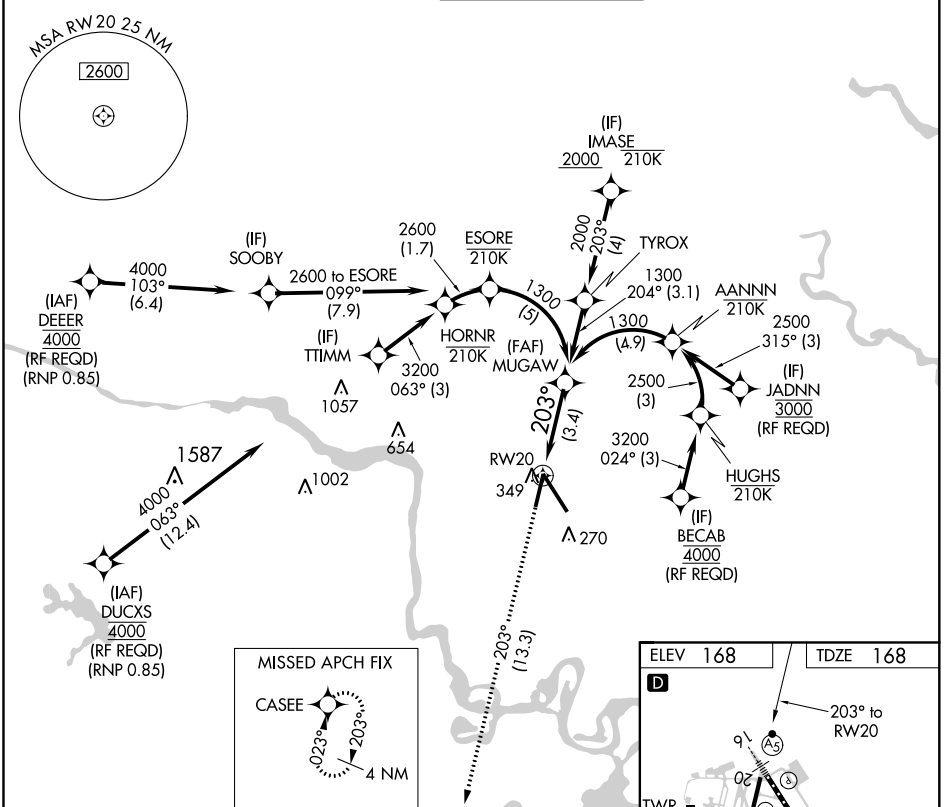
RICHMOND INTL (RIC)

RNP AR APCH.

▼ For uncompensated Baro-VNAV systems, procedure NA below -11°C or above 54°C.

MISSED APPROACH: Climb to 2000 on track 203° CASEE and hold.

ATIS	POTOMAC APP CON	RICHMOND TOWER	GND CON	CLNC DEL
<b>119.15 263.025</b>	<b>126.4 282.375</b> (001°-185°) <b>126.75 307.2</b> (186°-360°)	<b>121.1 257.8</b>	<b>121.9 348.6</b>	<b>127.55 348.6</b>



NE-3, 15 JUL 2021 to 12 AUG 2021

NE-3, 15 JUL 2021 to 12 AUG 2021

2000	CASEE	See planview for multiple IF locations.		
↑ tr 203°				
		MUGAW 1300		
			1300	
				GP 3.00° TCH 49
			3.4 NM	
CATEGORY	A	B	C	D
RNP 0.11 DA		505-1	337 (400-1)	
RNP 0.30 DA		613-1½	445 (500-1½)	

