

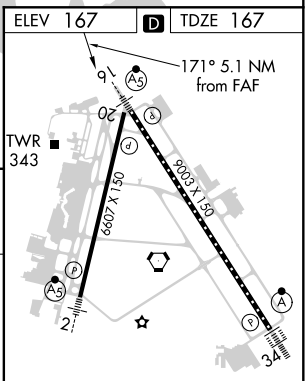
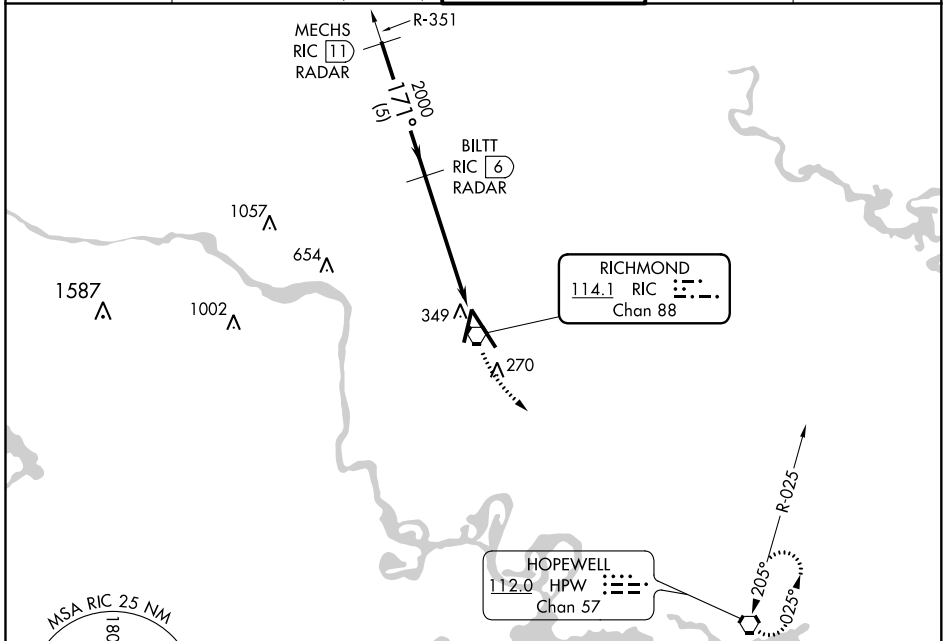
VORTAC RIC 114.1 Chan 88	APP CRS 171°	Rwy Idg TDZE 167 Apt Elev 167	9003
----------------------------------------------	------------------------	---------------------------------------------------	-------------

VOR RWY 16

RICHMOND INTL (RIC)

DME or RADAR required. RADAR required for procedure entry.		MALSR	MISSED APPROACH: Climbing left turn to 2000 direct HPW VORTAC and hold.
▼ Rwy 16 helicopter visibility reduction below RVR 4000 NA. For inop ALS, increase S-16 Cat A/B visibility to RVR 5500, and Cat C/D to 1 3/8 SM.			

ATIS 119.15 263.025	POTOMAC APP CON 126.4 282.375 (001°-185°) 126.75 307.2 (186°-360°)	RICHMOND TOWER 121.1 257.8	GND CON 121.9 348.6	CLNC DEL 127.55 348.6
-------------------------------	----------------------------------------------------------------------------------------	--------------------------------------	-------------------------------	---------------------------------



	VGSIs and descent angles not coincident (VGS Angle 3.00/TCH 71).		2000	HPW		
	MECHS RIC 11 RADAR	BILTT RIC 6 RADAR	RIC 2.2	RIC VORTAC 0.9		
	2000	2000				
	171°	171°				
		3.26°				
		TCH 56				
	5 NM	3.8 NM	1.3 NM			
CATEGORY	A	B	C	D		
S-16	640/40 473 (500-3/4)			640/50 473 (500-1)		
☑ CIRCLING	660-1 493 (500-1)	700-1 1/2 533 (600-1 1/2)		720-2 553 (600-2)		
	TDZ/CL Rwy 34 HIRL Rwy 2-20 and 16-34 REIL Rwy 20					
	FAF to MAP 5.1 NM					
	Knots	60	90	120	150	180
	Min:Sec	5:06	3:24	2:33	2:02	1:42

NE-3, 15 JUL 2021 to 12 AUG 2021

NE-3, 15 JUL 2021 to 12 AUG 2021