

LOC I-SLN <b>108.9</b>	APP CRS <b>353°</b>	Rwy Idg <b>12300</b>
		TDZE <b>1271</b>
		Apt Elev <b>1288</b>

# ILS or LOC RWY 35

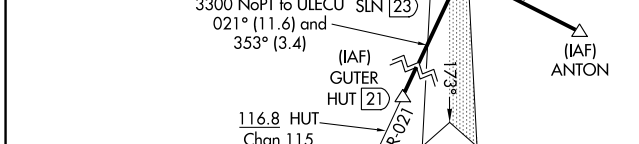
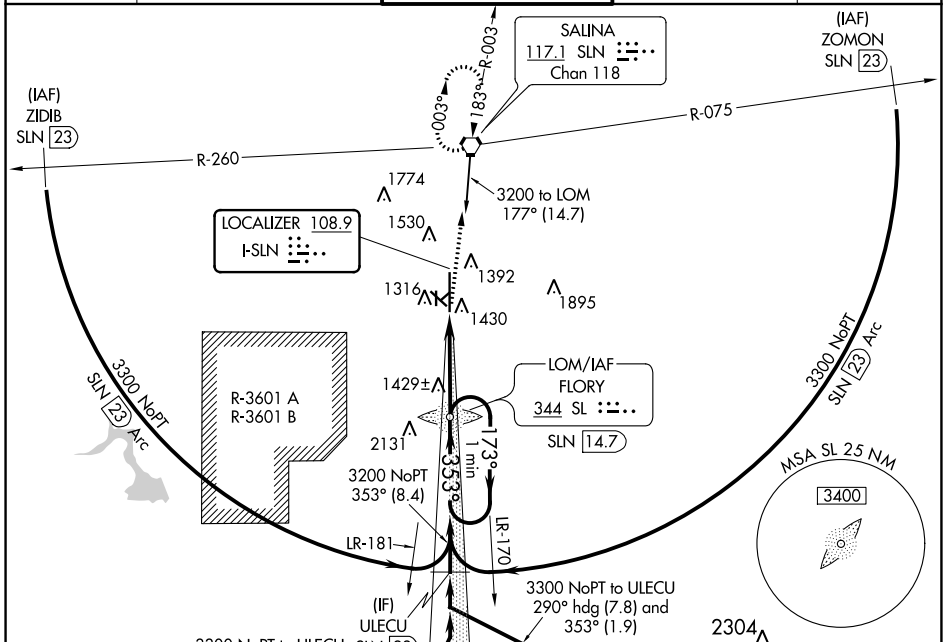
SALINA RGNL (SLN)

**⚠** For inop ALS, increase S-LOC 35 Cat D visibility to 1 1/4 SM and Cat E visibility to 1 1/2 SM. For inop ALS, increase S-ILS 35 Cat E visibility to 3/4 SM. Circling NA for Cats D and E southwest of Rwy 12-30.



**MISSED APPROACH:** Climb to 1700 then climb to 3000 direct SLN VORTAC and hold.

ATIS <b>120.15</b>	KANSAS CITY CENTER <b>134.9 363.2</b>	SALINA TOWER ★ <b>119.3 (CTAF) 0 257.7</b>	GND CON <b>121.9 397.9</b>	UNICOM <b>122.95</b>
-----------------------	--	---	-------------------------------	-------------------------

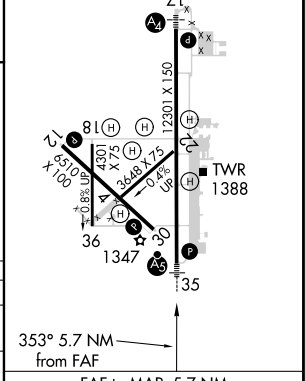


1700	3000	SLN	SL LOM SLN 14.7	One Minute Holding Pattern
↑		↑	↑	↑
5.7 NM				

CATEGORY	A	B	C	D	E
S-ILS 35	1471-1/2		200 (200-1/2)		
S-LOC 35	1680-1/2		409 (400-1/2)		
CIRCLING	1820-1 532 (600-1)	1840-1 552 (600-1)	1860-1 1/2 572 (600-1 1/2)	1860-2 572 (600-2)	1920-2 1/4 632 (700-2 1/4)

ELEV 1288	D	TDZE 1271
-----------	---	-----------

HIRL Rwy 17-35  
MIRL Rwy 12-30



FAF to MAP 5.7 NM					
Knots	60	90	120	150	180
Min:Sec	5:42	3:48	2:51	2:17	1:54