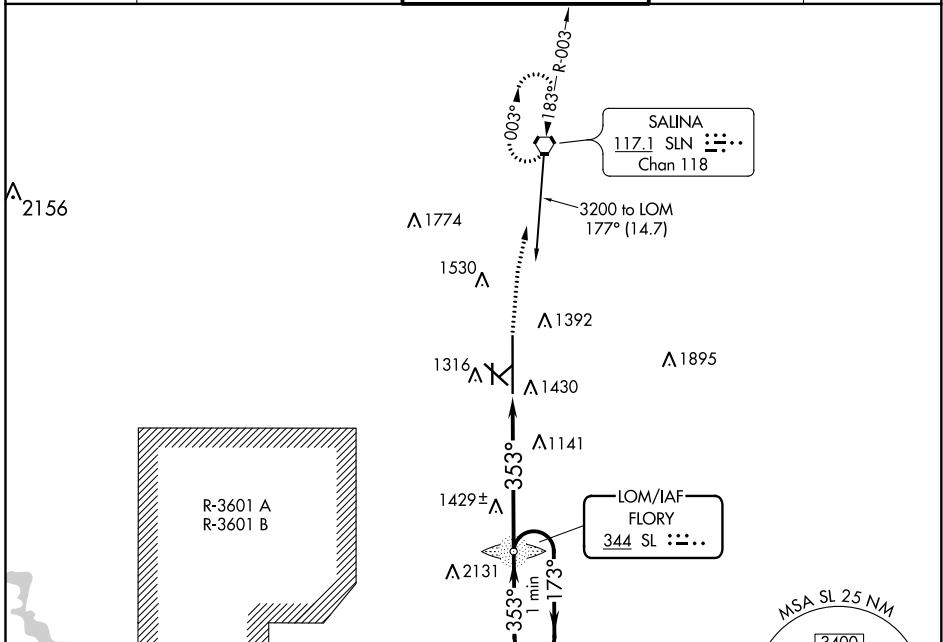


LOM SL <b>344</b>	APP CRS <b>353°</b>	Rwy Idg TDZE Apt Elev	<b>12300</b> <b>1271</b> <b>1288</b>
----------------------	------------------------	-----------------------------	--

# NDB RWY 35

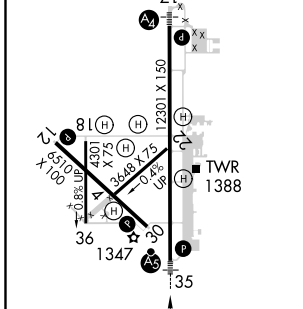
SALINA RGNL (SLN)

<p>Cat D Circling NA southwest of runway 12-30. For inop ALS, increase S-35 Cats A/B visibility to 1 SM and Cats C/D to 1 3/8 SM.</p>	<p>MALS R</p>	<p>MISSED APPROACH: Climb to 3000 direct SLN VORTAC and hold.</p>		
		<p>ATIS <b>120.15</b></p>	<p>KANSAS CITY CENTER <b>134.9 363.2</b></p>	<p>SALINA TOWER ★ <b>119.3 (CTAF) 257.7</b></p>



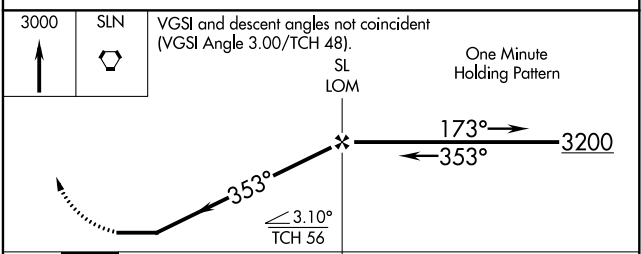
ELEV 1288 **D** TDZE 1271

HIRL Rwy 17-35   
MIRL Rwy 12-30



FAF to MAP 5.7 NM

Knots	60	90	120	150	180
Min:Sec	5:42	3:48	2:51	2:17	1:54



CATEGORY	A	B	C	D
S-35	1760-3/4 489 (500-3/4)	489 (500-3/4)	1760-1 489 (500-1)	1760-1 1/4 489 (500-1 1/4)
CIRCLING	1820-1 532 (600-1)	1840-1 552 (600-1)	1860-1 1/2 572 (600-1 1/2)	1860-2 572 (600-2)

NC-2, 15 JUL 2021 to 12 AUG 2021

NC-2, 15 JUL 2021 to 12 AUG 2021