

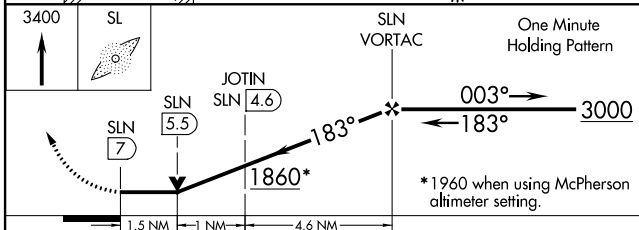
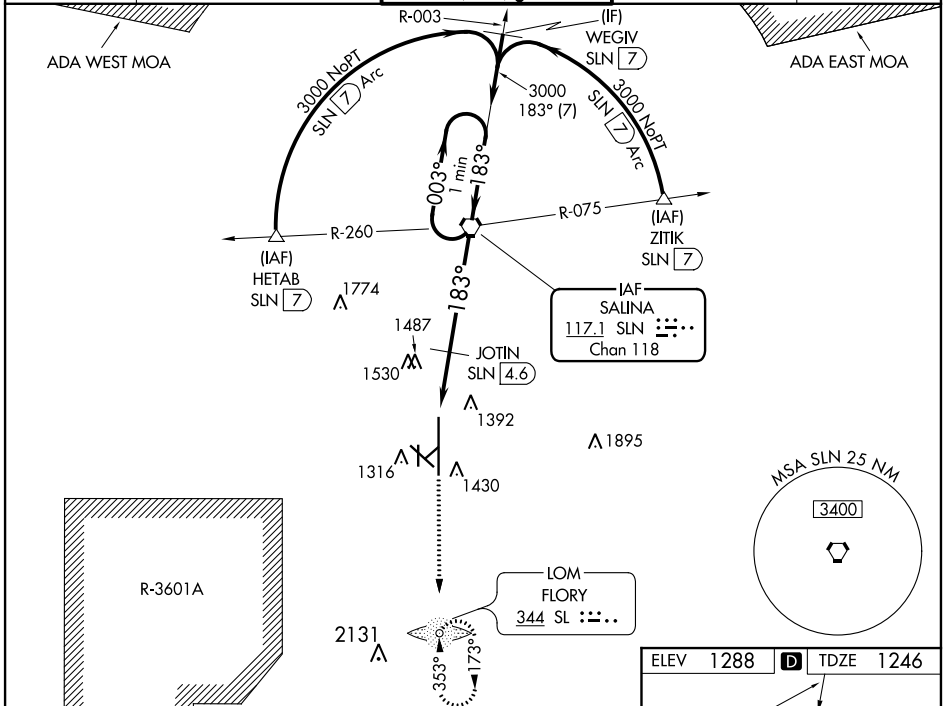
VORTAC SLN 117.1 Chan 118	APP CRS 183°	Rwy Idg 12300 TDZE 1246 Apt Elev 1288
---	------------------------	--

VOR RWY 17

SALINA RGNL (SLN)

<p>▽ Inoperative table does not apply to Cat C/D/E. ▲ Circling NA for Cat D/E southwest of Rwy 12-30. ADF required.</p>	<p>MALS</p>	<p>MISSED APPROACH: Climb to 3400 direct SL LOM and hold.</p>
---	-------------	---

ATIS 120.15	KANSAS CITY CENTER 134.9 363.2	SALINA TOWER * 119.3 (CTAF) 0 257.7	GND CON 121.9 397.9	UNICOM 122.95
-----------------------	--	---	-------------------------------	-------------------------



CATEGORY	A	B	C	D	E
S-17	1860-3/4 614 (600-3/4)		1860-1 3/4 614 (600-1 3/4)	1860-2 614 (600-2)	1860-2 1/4 614 (600-2 1/4)
CIRCLING	1860-1 572 (600-1)		1860-1 3/4 572 (600-1 3/4)	1860-2 572 (600-2)	1920-2 1/4 632 (700-2 1/4)
JOTIN FIX MINIMUMS					
S-17	1760-3/4 514 (500-3/4)		1760-1 1/2 514 (500-1 1/2)	1760-1 3/4 514 (500-1 3/4)	
CIRCLING	1820-1 532 (600-1)	1840-1 552 (600-1)	1860-1 1/2 572 (600-1 1/2)	1860-2 572 (600-2)	1920-2 1/4 632 (700-2 1/4)

ELEV 1288 **D** TDZE 1246

Diagram details: 183° 7 NM from FAF, 150, 120, 90, 60, 30, 36, 1347, 35, 36, 37, 38, 39, 40, 41, 42, 43, 44, 45, 46, 47, 48, 49, 50, 51, 52, 53, 54, 55, 56, 57, 58, 59, 60, 61, 62, 63, 64, 65, 66, 67, 68, 69, 70, 71, 72, 73, 74, 75, 76, 77, 78, 79, 80, 81, 82, 83, 84, 85, 86, 87, 88, 89, 90, 91, 92, 93, 94, 95, 96, 97, 98, 99, 100. TWR 1388. HIRL Rwy 17-35, MIRL Rwy 12-30. FAF to MAP 7 NM. Knots: 60, 90, 120, 150, 180. Min:Sec: 7:00, 4:40, 3:30, 2:48, 2:20.

NC-2, 15 JUL 2021 to 12 AUG 2021

NC-2, 15 JUL 2021 to 12 AUG 2021