

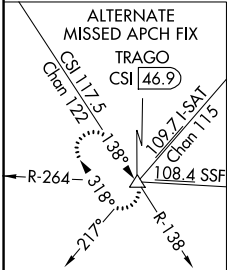
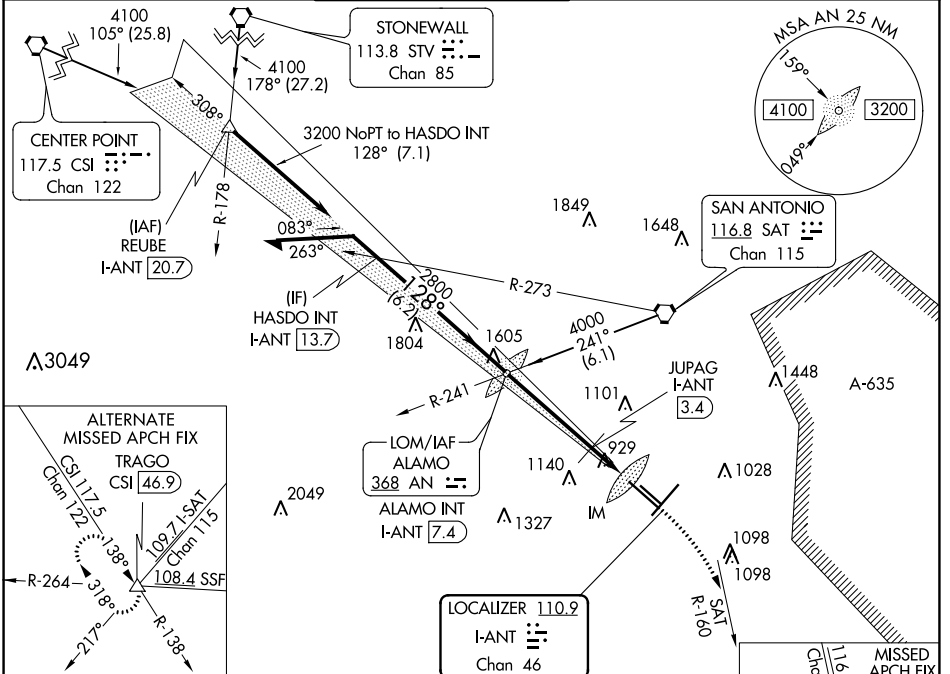
LOC/DME I-ANT <b>110.9</b> Chan 46	APP CRS <b>128°</b>	Rwy 13R Idg TDZE Apt Elev	<b>8502</b> <b>809</b> <b>809</b>
--	------------------------	---------------------------------	---

# ILS RWY 13R (CAT II)

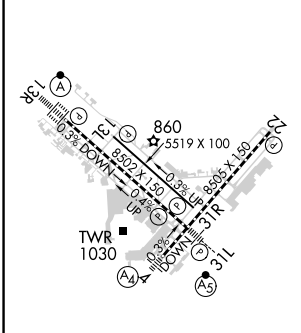
## SAN ANTONIO INTL (SAT)

<b>▲</b>	ALSF-2 	MISSED APPROACH: Climb to 3100 on heading 128° and SAT VORTAC R-160 to EMBOW INT and hold.
----------	------------	--

D-ATIS <b>118.9</b>	SAN ANTONIO APP CON <b>125.1 307.0</b>	SAN ANTONIO TOWER <b>119.8 257.8</b>	GND CON <b>121.9 348.6</b>	CLNC DEL <b>126.7</b>	CPDLC
------------------------	---	---	-------------------------------	--------------------------	-------



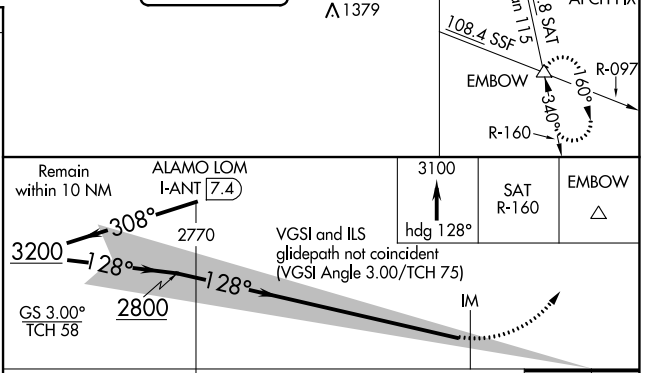
ELEV 809	<b>D</b>	TDZE 809
----------	----------	----------



TDZ/CL Rwy 13R  
REIL Rwys 13L, 22 and 31R  
HIRL Rwys 4-22 and 13R-31L  
MIRL Rwy 13L-31R

FAF to MAP 5.9 NM

Knots	60	90	120	150	180
Min:Sec	5:54	3:56	2:57	2:22	1:58



CATEGORY	A	B	C	D
S-ILS 13R	RA 104/12 100 DA 909			

**CATEGORY II ILS - SPECIAL AIRCREW & AIRCRAFT CERTIFICATION REQUIRED**

SC-3, 15 JUL 2021 to 12 AUG 2021

SC-3, 15 JUL 2021 to 12 AUG 2021