

# RNAV (RNP) Z RWY 13R

SAN ANTONIO INTL (SAT)

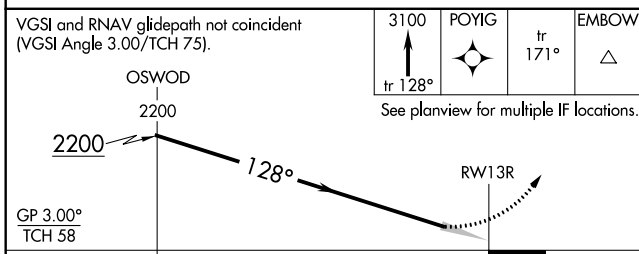
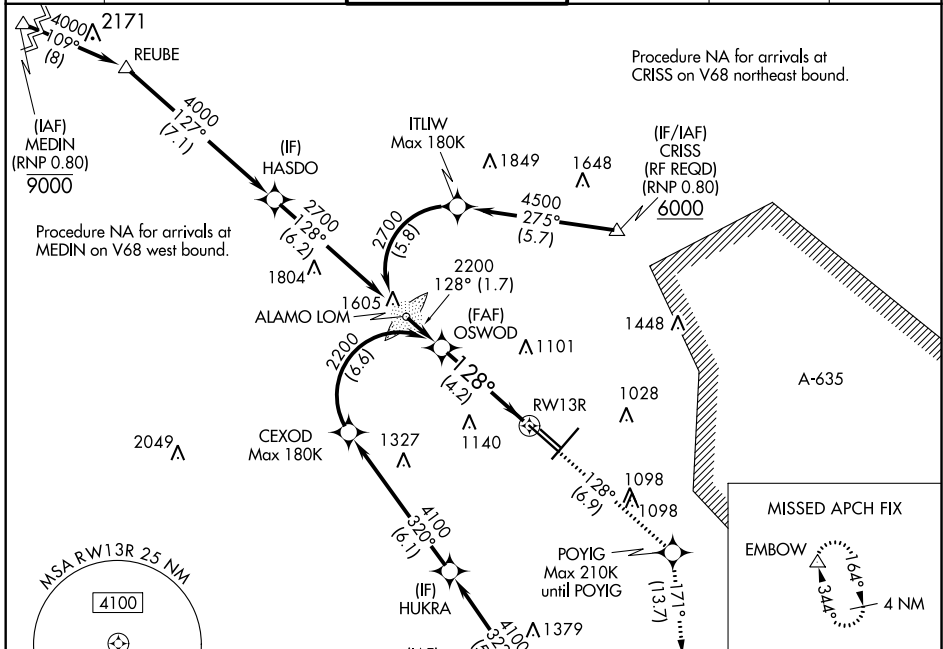
APP CRS	Rwy Idg	<b>8502</b>
<b>128°</b>	TDZE	<b>809</b>
	Apt Elev	<b>809</b>

For uncompensated Baro-VNAV systems, procedure NA below -4°C (25°F) or above 54°C (130°F). GPS required.

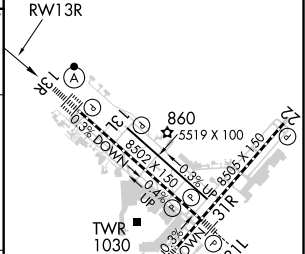
ALSIF-2

MISSED APPROACH: Climb to 3100 on track 128° to POYIG and track 171° to EMBOW and hold.

D-ATIS	SAN ANTONIO APP CON	SAN ANTONIO TOWER	GND CON	CLNC DEL	CPDLC
<b>118.9</b>	<b>125.1 307.0</b>	<b>119.8 257.8</b>	<b>121.9 348.6</b>	<b>126.7</b>	



ELEV 809	<b>D</b>	TDZE 809
----------	----------	----------



CATEGORY	A	B	C	D
RNP 0.15 DA		1150/30	341 (400- $\frac{3}{8}$ )	
RNP 0.30 DA		1303/60	494 (500-1 $\frac{1}{4}$ )	

**AUTHORIZATION REQUIRED**

TDZ/CL RWY 13R  
 REIL Rwy 13L, 22 and 31R  
 HIRL Rwy 4-22 and 13R-31L  
 MIRL Rwy 13L-31R

SC-3, 15 JUL 2021 to 12 AUG 2021

SC-3, 15 JUL 2021 to 12 AUG 2021