

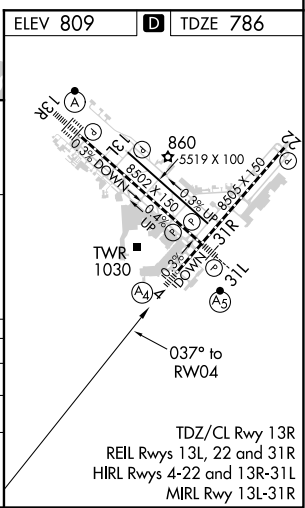
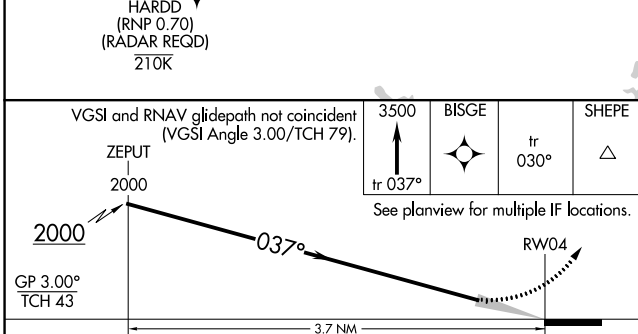
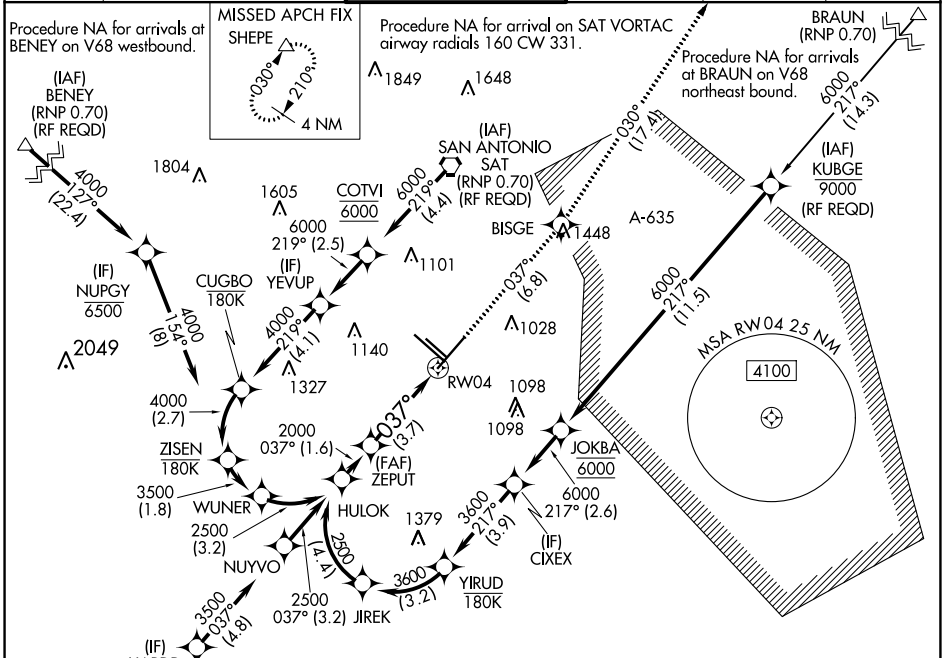
APP CRS	Rwy Idg	8505
037°	TDZE	786
	Apt Elev	809

RNAV (RNP) Z RWY 4

SAN ANTONIO INTL (SAT)

<p>▼ For uncompensated Baro-VNAV systems, procedure NA below -4°C (25°F) or above 54°C (130°F). GPS required. For inop ALS, increase RNP 0.15 Cat D visibility to 1¼ SM and RNP 0.30 Cat D visibility to 1¾ SM.</p>	<p>MAIS</p> <p>Ⓜ -</p>	<p>MISSED APPROACH: Climb to 3500 on track 037° to BISGE and track 030° to SHEPE and hold.</p>
---	------------------------	--

D-ATIS	SAN ANTONIO APP CON	SAN ANTONIO TOWER	GND CON	CLNC DEL	CPDLC
118.9	125.1 307.0	119.8 257.8	121.9 348.6	126.7	



CATEGORY	A	B	C	D
RNP 0.15 DA		1171/50	385 (400-1)	
RNP 0.30 DA		1284-1½	498 (500-1½)	

AUTHORIZATION REQUIRED

SC-3, 15 JUL 2021 to 12 AUG 2021

SC-3, 15 JUL 2021 to 12 AUG 2021

TDZ/CL Rwy 13R
REIL Rws 13L, 22 and 31R
HIRL Rws 4-22 and 13R-31L
MIRL Rwy 13L-31R