

WAAS CH 82409 W13A	APP CRS 128°	Rwy Idg TDZE 809 Apt Elev 809	8502
--	------------------------	---	-------------

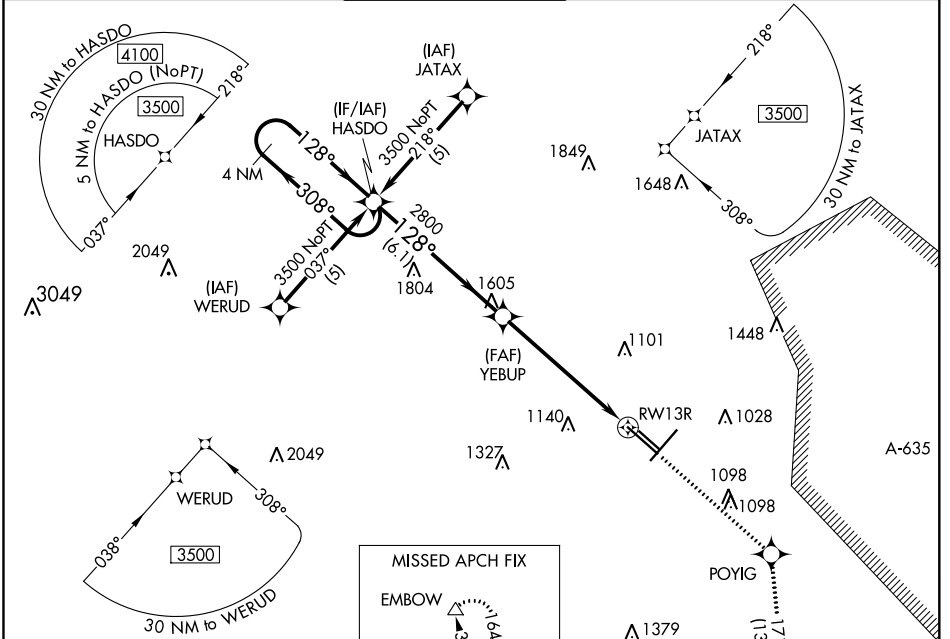
RNAV (GPS) Y RWY 13R

SAN ANTONIO INTL (SAT)

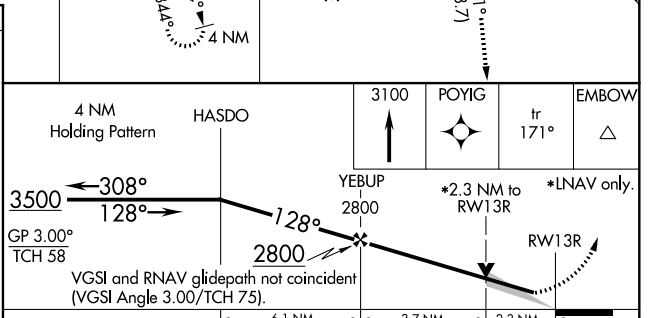
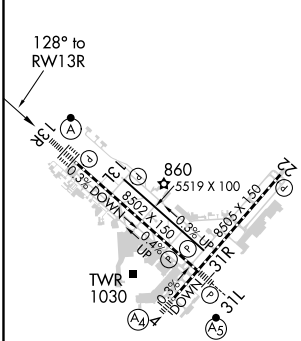
▼ For uncompensated Baro-VNAV systems, LNAV/VNAV NA below -2°C (29°F) or above 54°C (130°F). Circling NA west of Rwy 4 and 13R. DME/DME RNP-0.3 NA.
 ▲ For inop ALS, increase LPV all Cats visibility to RVR 4500, LNAV/VNAV all Cats visibility to 1¾ SM, and LNAV Cats C and D visibility to 2½ SM.

ALSF-2
 MISSED APPROACH: Climb to 3100 direct POYIG and track 171° to EMBOW and hold.

D-ATIS 118.9	SAN ANTONIO APP CON 125.1 307.0	SAN ANTONIO TOWER 119.8 257.8	GND CON 121.9 348.6	CLNC DEL 126.7	CPDLC
------------------------	---	---	-------------------------------	--------------------------	-------



ELEV 809	D	TDZE 809
-----------------	----------	-----------------



CATEGORY	A	B	C	D
LPV DA		1107/24	298 (300-½)	
LNAV/VNAV DA		1340-1¾	531 (600-1¾)	
LNAV MDA	1620/24 811 (900-½)	1620/40 811 (900-¾)	1620-1⅞	811 (900-1⅞)
CIRCLING	1620-1¼	811 (900-1¼)	1620-2½ 811 (900-2½)	1620-2¾ 811 (900-2¾)

TDZ/CL Rwy 13R
 REIL Rwy 13L, 21 and 31R
 MRL Rwy 13L-31R
 HIRL Rwy 3-21 and 13R-31L

SC-3, 15 JUL 2021 to 12 AUG 2021

SC-3, 15 JUL 2021 to 12 AUG 2021