

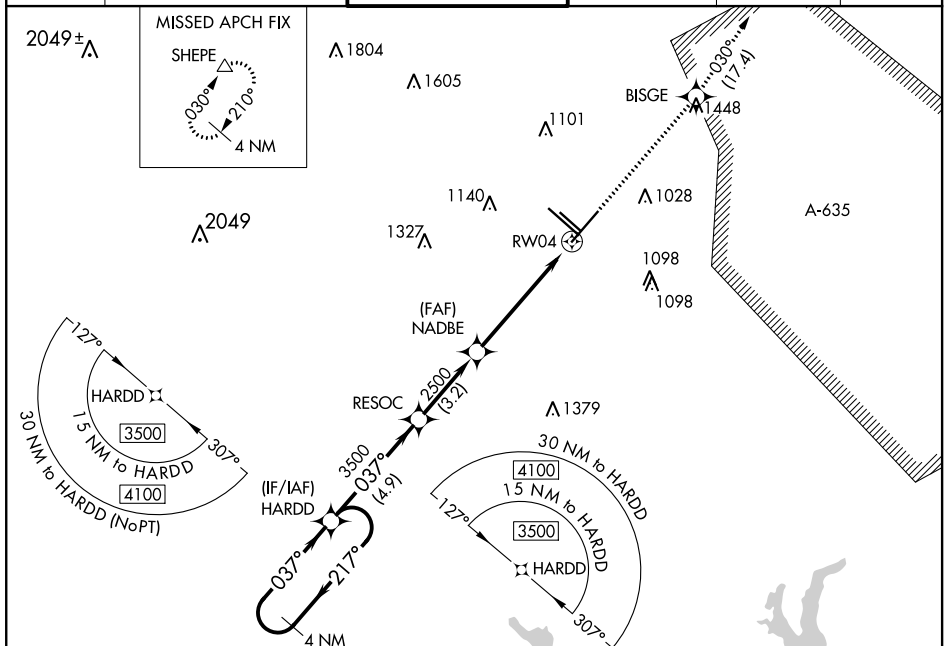
WAAS CH <b>77613</b> <b>W04A</b>	APP CRS <b>037°</b>	Rwy Idg TDZE Apt Elev	<b>8505</b> <b>786</b> <b>809</b>
--	------------------------	-----------------------------	---

# RNAV (GPS) Y RWY 4

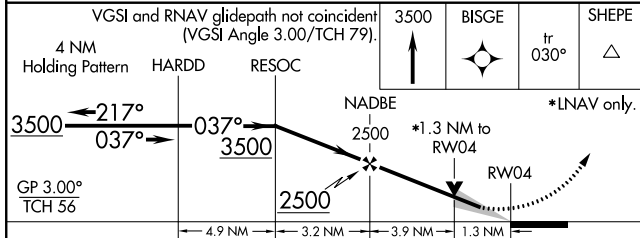
SAN ANTONIO INTL (SAT)

<p>▼ Inop table does not apply to LPV. For uncompensated Baro-VNAV systems, LNAV/VNAV NA below -4°C (25°F) or above 54°C (130°F). Circling NA west of Rwy 4 and 13R. DME/DME RNP-0.3 NA. For inop ALS, increase LNAV/VNAV all Cats and LNAV Cats C and D visibility to 1<math>\frac{1}{2}</math>.</p>	MALS 	MISSED APPROACH: Climb to 3500 direct BISGE and track 030° to SHEPE and hold.

D-ATIS <b>118.9</b>	SAN ANTONIO APP CON <b>125.1 307.0</b>	SAN ANTONIO TOWER <b>119.8 257.8</b>	GND CON <b>121.9 348.6</b>	CLNC DEL <b>126.7</b>	CPDLC
------------------------	---	---	-------------------------------	--------------------------	-------



ELEV 809	<b>D</b> TDZE 786
----------	-------------------



CATEGORY	A	B	C	D
LPV DA		986/40	200 (200- $\frac{3}{4}$ )	
LNAV/VNAV DA		1201/60	415 (400-1 $\frac{1}{4}$ )	
LNAV MDA	1280/40	494 (500- $\frac{3}{4}$ )	1280/60	494 (500-1 $\frac{1}{4}$ )
CIRCLING	1300-1	491 (500-1)	1320-1 $\frac{1}{2}$ 511 (600-1 $\frac{1}{2}$ )	1380-2 571 (600-2)

