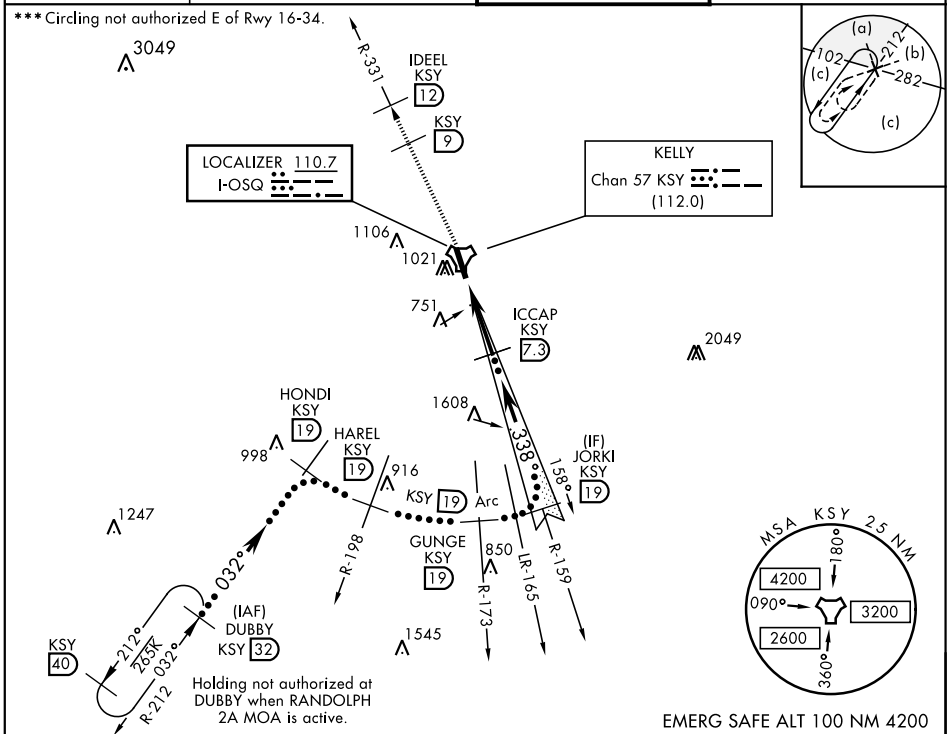


# HI-ILS or LOC/DME Z RWY 34

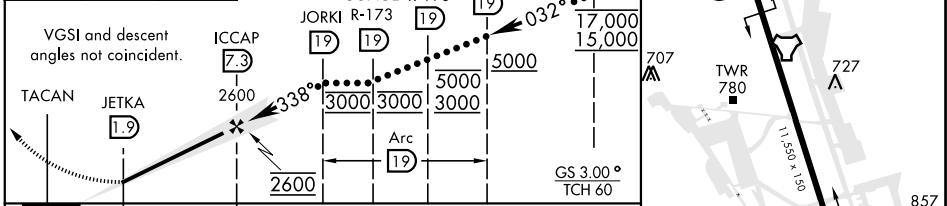
LOC I-OSQ <b>110.7</b>	APCH CRS <b>338°</b>	Rwy ldg <b>11,550</b> TDZE <b>660</b> Arprt Elev <b>690</b>	JAL-371 [USAF]	KELLY FLD (KSKF)
---------------------------	-------------------------	---	----------------	------------------

A1 **ALSF-1** MISSED APPROACH: Climbing to 2500 via KSY TACAN R-331 until 9 DME, cross 9 DME at 2500, then continue climb to 3000 to IDEEL/12.0 DME. Expect ATC instructions.

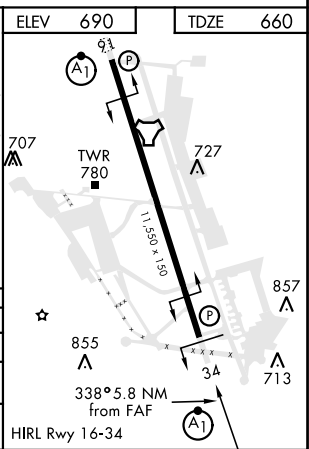
ATIS <b>120.45 273.5</b>	SAN ANTONIO APP CON <b>118.05 353.5</b>	KELLY TOWER <b>124.3 322.35</b>	GND CON <b>121.8 289.4</b>
-----------------------------	--	------------------------------------	-------------------------------



2500 KSY R-331	3000 IDEEL KSY	DUBBY R-212
9	12	32



CATEGORY S-ILS 34* S-LOC/DME 34** ***CIRCLING	C	D	E
	860/24	200 (200-½)	
	1040/35	380 (400-¾)	
	1360-1¾ 670 (700-1¾)	1440-2½ 750 (800-2½)	1900-3 (1300-3)



# HI-ILS or LOC/DME Z RWY 34

SC-3, 15 JUL 2021 to 12 AUG 2021

SC-3, 15 JUL 2021 to 12 AUG 2021