

SAN ANTONIO, TEXAS

ILS or LOC/DME Y RWY 16

LOC I-SKF 110.1	APCH CRS 158°	Rwy ldg 11,550 TDZE 690 Arprt Elev 690
---------------------------	-------------------------	---

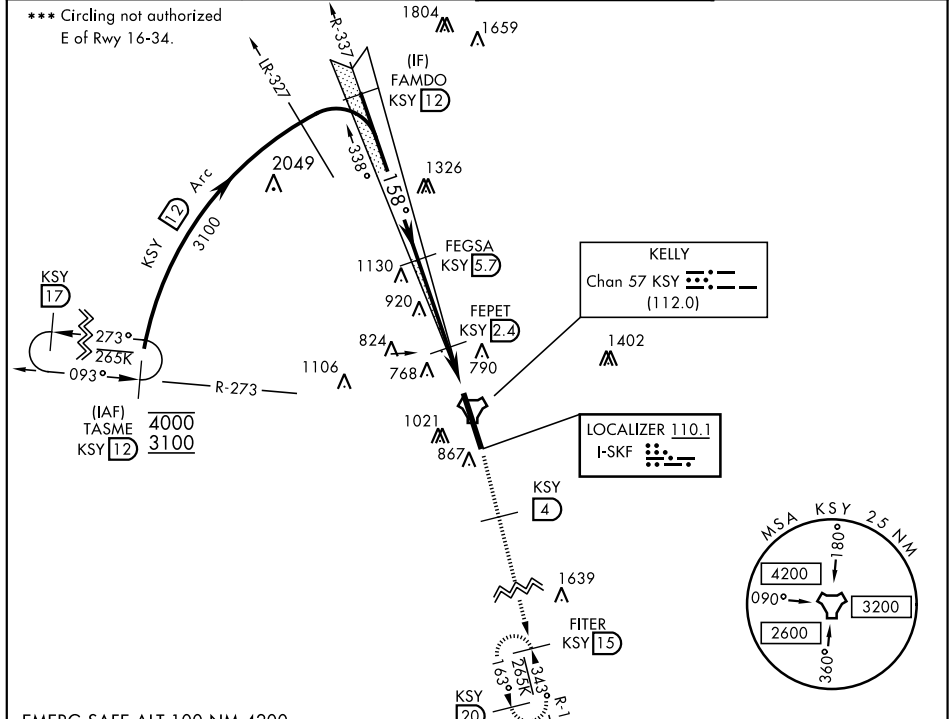
AL-371 [USAF]

KELLY FLD (KSKF)

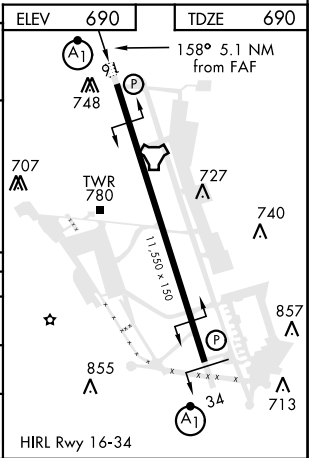
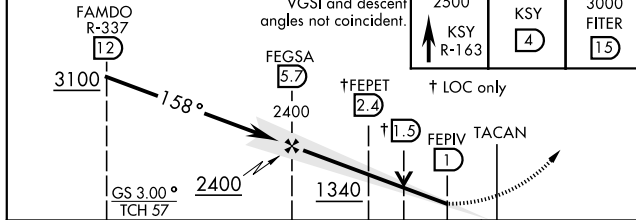
▼*When ALS inop, increase RVR to 40 and vis to ¾ mile.
 **When ALS inop, increase CAT AB RVR to 55 and vis to 1 mile, CAT CDE RVR to 60 and vis to 1 ½ miles.

ALSF-1 MISSED APPROACH: Climb to 2500 via KSY R-163 until 4 DME, then continue climb to 3000 to FITER/15 DME and hold. Non-TACAN equipped aircraft expect alternate missed approach instructions.

ATIS 120.45 273.5	SAN ANTONIO APP CON 118.05 353.5	KELLY TOWER 124.3 322.35	GND CON 121.8 289.4
-----------------------------	--	------------------------------------	-------------------------------



EMERG SAFE ALT 100 NM 4200	ELEV 690	TDZE 690
----------------------------	----------	----------



CATEGORY	A	B	C	D	E
S-ILS 16*	890/24		200	(200-½)	
S-LOC/DME 16**	1100/24	410 (500-½)	1100/40	410	(500-¾)
CIRCLING ***	1220-1	1300-1	1360-1¾	1440-2½	1900-3
	530 (600-1)	610 (700-1)	670 (700-1¾)	750 (800-2½)	1210 (1300-3)

SAN ANTONIO, TEXAS
Amdt 1 13AUG20

29° 23' N-98° 35' W

KELLY FLD (KSKF)

ILS or LOC/DME Y RWY 16

SC-3, 15 JUL 2021 to 12 AUG 2021

SC-3, 15 JUL 2021 to 12 AUG 2021