

# ILS or LOC/DME Y RWY 34

LOC I-OSQ <b>110.7</b>	APCH CRS <b>338°</b>	Rwy Ldg <b>11,550</b> TDZE <b>660</b> Arprt Elev <b>690</b>
---------------------------	-------------------------	--

AL-371 [USAF]

KELLY FLD (KSKF)

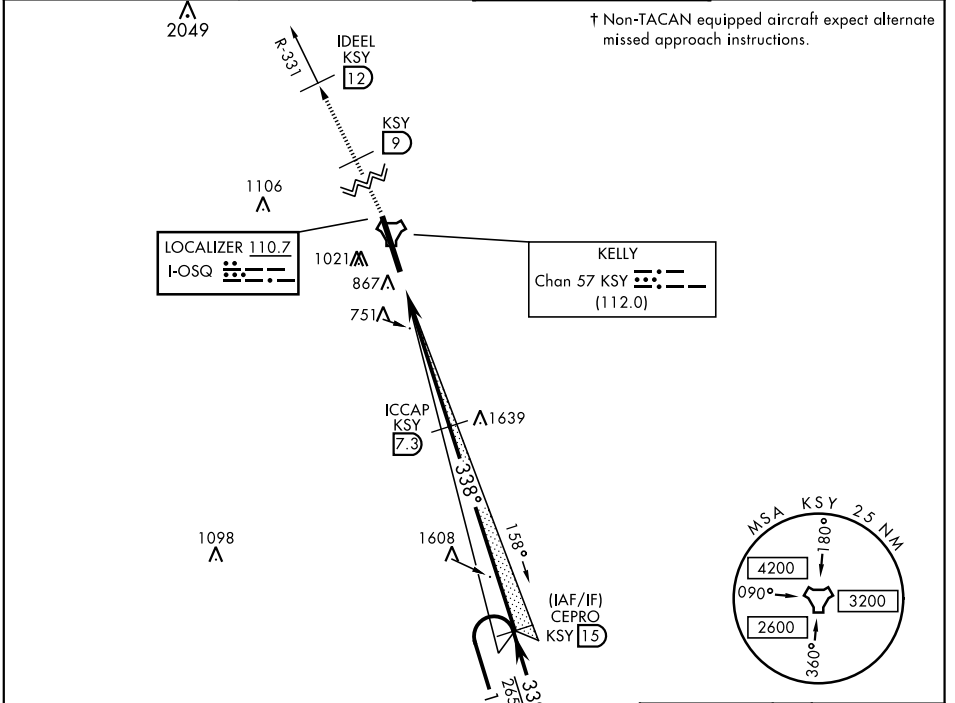
▼ \* When ALS inop, increase RVR to 40 and vis to ¼ mile.  
\*\* When ALS inop, increase RVR to 55 and vis to 1 mile.  
\*\*\* Circling not authorized E of Rwy 16-34.

ALSF-1  
**A1**

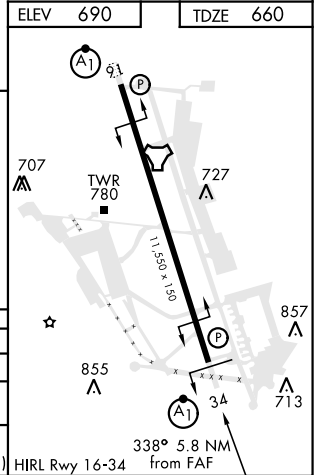
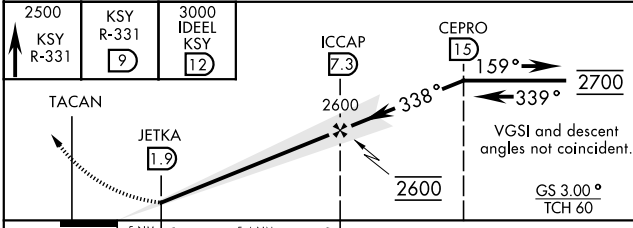
† MISSED APPROACH: Climb to 2500 via KSY TACAN R-331 until 9 DME, cross 9 DME at 2500, then continue climb to 3000 to IDEEL/12 DME. Expect ATC instructions.

ATIS <b>120.45 273.5</b>	SAN ANTONIO APP CON <b>118.05 353.5</b>	KELLY TOWER <b>124.3 322.35</b>	GND CON <b>121.8 289.4</b>
-----------------------------	--	------------------------------------	-------------------------------

† Non-TACAN equipped aircraft expect alternate missed approach instructions.



ELEV 690	TDZE 660
----------	----------



CATEGORY	A	B	C	D	E
S-ILS 34*	860/24		200	(200-½)	
S-LOC/DME 34**	1040/24	380 (400-½)	1040/35	380	(400-¾)
CIRCLING***	1220-1 530 (600-1)	1300-1 610 (700-1)	1360-1¾ 670 (700-1¾)	1440-2½ 750 (800-2½)	1900-3 1210(1300-3)

# ILS or LOC/DME Y RWY 34

SC-3, 15 JUL 2021 to 12 AUG 2021

SC-3, 15 JUL 2021 to 12 AUG 2021