

SAN ANTONIO, TEXAS

RNAV (GPS) RWY 16

APCH CRS	Rwy Idg	11,550
158°	TDZE	690
	Arprt Elev	690

AL-371 (USAF)

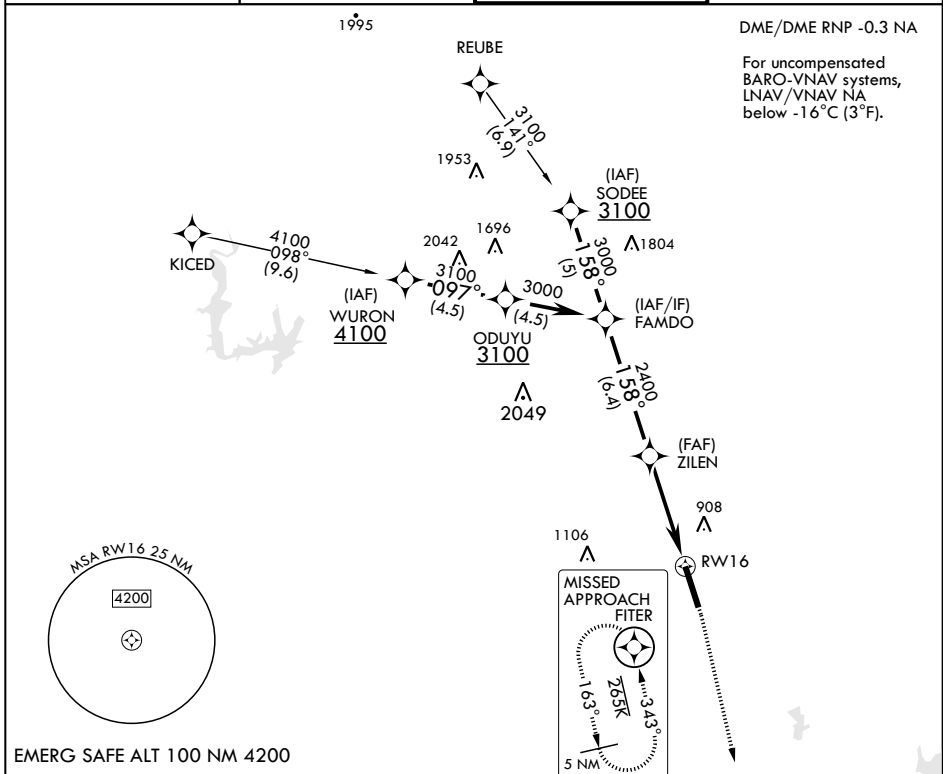
KELLY FIELD (KSKF)

* When ALS inop, increase all CAT vis to 1 3/4 miles.
 ** When ALS inop, increase CAT AB RVR to 55, and vis to 1 mile; CAT CDE vis to 1 5/8 miles.
 *** Circling not authorized E of Rwy 16-34.



MISSED APPROACH: Climb to 1500 then climbing right turn to 3000 direct FITER and hold.

ATIS 120.45 273.5	SAN ANTONIO APP CON 118.05 353.5	KELLY TOWER 124.3 322.35	GND CON 121.8 289.4
----------------------	-------------------------------------	-----------------------------	------------------------



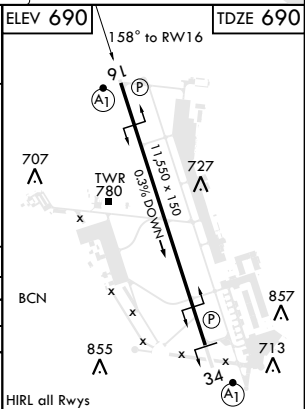
DME/DME RNP -0.3 NA

For uncompensated BARO-VNAV systems, LNAV/VNAV NA below -16°C (3°F).

SC-3, 15 JUL 2021 to 12 AUG 2021

SC-3, 15 JUL 2021 to 12 AUG 2021

FAMD0	VGS1 and descent angles not coincident.		1500	3000	FITER	ELEV 690	TDZE 690
3000	ZILEN		†NNAV only			158° to RW16	
	2400		†1.5 NM to RW16			GP 3.05° TCH 57	
	5.1 NM		RW16			11.51 NM x 163°	
CATEGORY	A	B	C	D	E		
LNAV/VNAV DA*	1080/35		390		(400-%)		
LNAV MDA**	1260/24 570 (600-1/2)		1260-1/4 570 (600-1/4)				
CIRCLING***	1260-1 570 (600-1)	1300-1 610 (700-1)	1360-1 3/4 670 (700-1 3/4)	1440-2 1/2 750 (800-2 1/2)	1900-3 1210 (1300-3)		



SAN ANTONIO, TEXAS
Amdt 1 10OCT19

29°23'N - 98°35'W

KELLY FIELD (KSKF)

RNAV (GPS) RWY 16