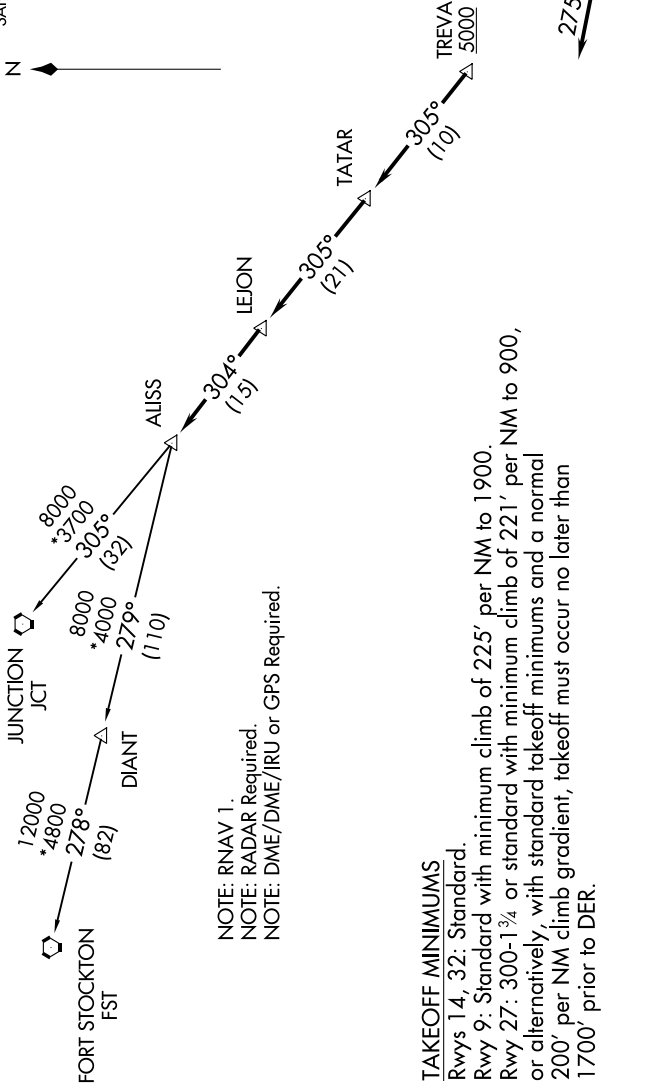


ALISS FIVE DEPARTURE (RNAV)

ATIS 128.8
 CLNC DEL 121.7
 GND CON 121.7 379.9
 SAN ANTONIO DEP CON 121.7 290.225
 STINSON TOWER ★ 118.2 379.9



NOTE: RNAV 1.
 NOTE: RADAR Required.
 NOTE: DME/DME/IRU or GPS Required.

TAKEOFF MINIMUMS

Rwy 14, 32: Standard.
 Rwy 9: Standard with minimum climb of 225' per NM to 1900.
 Rwy 27: 300-1 3/4 or standard with minimum climb of 221' per NM to 900, or alternatively, with standard takeoff minimums and a normal 200' per NM climb gradient, takeoff must occur no later than 1700' prior to DER.

NOTE: Chart not to scale.

(NARRATIVE ON FOLLOWING PAGE)

SC-3, 15 JUL 2021 to 12 AUG 2021