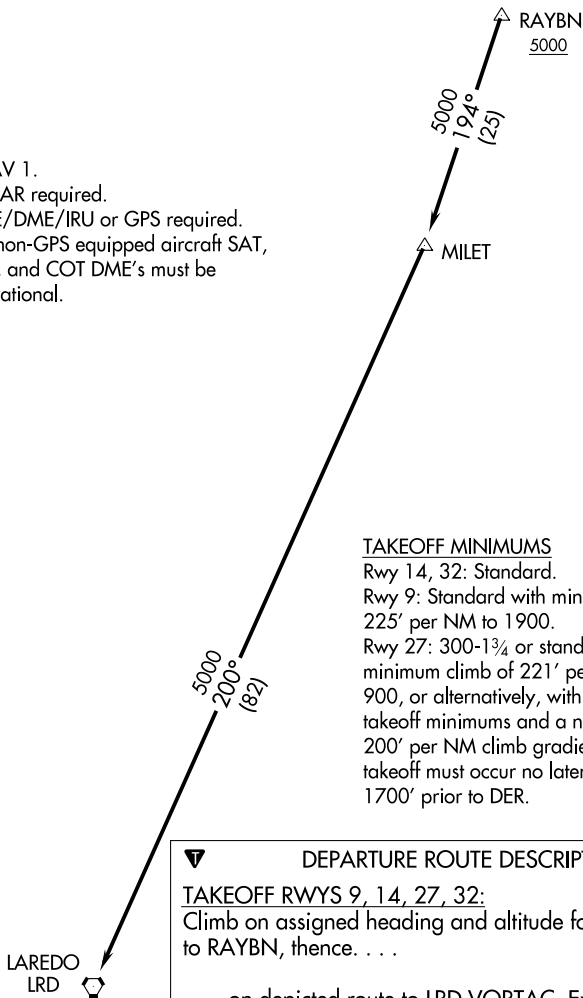


# MILET FOUR DEPARTURE (RNAV)

ATIS 128.8  
CLNC DEL  
121.7  
GND CON  
121.7 379.9  
SAN ANTONIO DEP CON  
125.7 290.225  
STINSON TOWER★  
118.2 379.9



- NOTE: RNAV 1.
- NOTE: RADAR required.
- NOTE: DME/DME/IRU or GPS required.
- NOTE: For non-GPS equipped aircraft SAT, THX, and COT DME's must be operational.



### TAKEOFF MINIMUMS

Rwy 14, 32: Standard.  
 Rwy 9: Standard with minimum climb of 225' per NM to 1900.  
 Rwy 27: 300-1¼ or standard with a minimum climb of 221' per NM to 900, or alternatively, with standard takeoff minimums and a normal 200' per NM climb gradient, takeoff must occur no later than 1700' prior to DER.



### DEPARTURE ROUTE DESCRIPTION

#### TAKEOFF RWYS 9, 14, 27, 32:

Climb on assigned heading and altitude for RADAR vectors to RAYBN, thence. . . .

. . . .on depicted route to LRD VORTAC. Expect filed altitude 10 minutes after departure.

NOTE: Chart not to scale.

SC-3, 15 JUL 2021 to 12 AUG 2021

SC-3, 15 JUL 2021 to 12 AUG 2021

# MILET FOUR DEPARTURE (RNAV)