

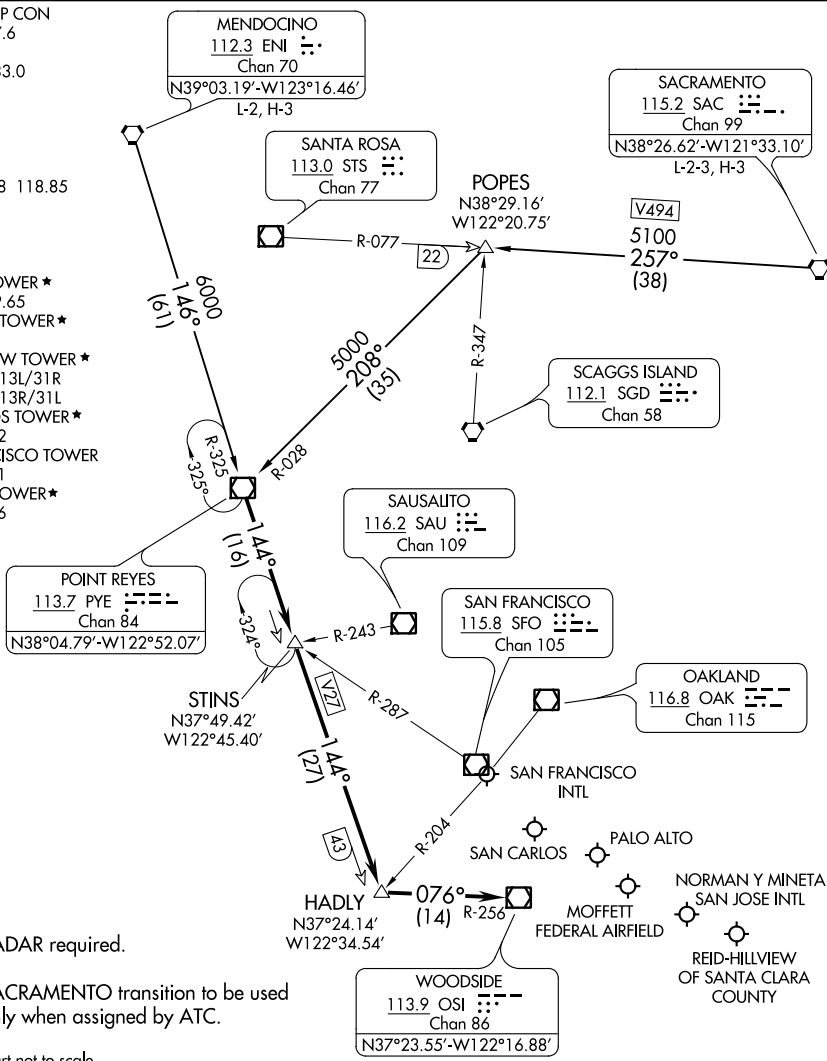
# POINT REYES THREE ARRIVAL

AL-375 (FAA)

SAN FRANCISCO, CALIFORNIA

NORCAL APP CON

- 133.95 317.6
- KNUQ ATIS
- 124.175 283.0
- PAO ATIS
- 135.275
- RHV ATIS
- 125.2
- SFO D-ATIS
- 113.7 115.8 118.85
- SJC D-ATIS
- 126.95
- SQL ATIS
- 125.9
- MOFFETT TOWER \*
- 119.55 259.65
- PALO ALTO TOWER \*
- 118.6
- REID-HILLVIEW TOWER \*
- 119.8 RWY 13L/31R
- 126.1 RWY 13R/31L
- SAN CARLOS TOWER \*
- 119.0 326.2
- SAN FRANCISCO TOWER
- 120.5 269.1
- SAN JOSE TOWER \*
- 124.0 257.6



NOTE: RADAR required.

NOTE: SACRAMENTO transition to be used only when assigned by ATC.

NOTE: Chart not to scale.

### ARRIVAL ROUTE DESCRIPTION

MENDOCINO TRANSITION (ENI.PYE3): From over ENI VORTAC on ENI R-146 and PYE R-325 to PYE VOR/DME. Thence. . . .

SACRAMENTO TRANSITION (SAC.PYE3): From over SAC VORTAC on SAC R-257 and PYE R-028 to PYE VOR/DME. Thence. . . .

. . . .From over PYE VOR/DME on PYE R-144 to HADLY, then on OSI R-256 to OSI VOR/DME. Expect RADAR vectors to final approach course.

# POINT REYES THREE ARRIVAL

(PYE.PYE3) 22JUN17

SAN FRANCISCO, CALIFORNIA

SW-2, 15 JUL 2021 to 12 AUG 2021

SW-2, 15 JUL 2021 to 12 AUG 2021