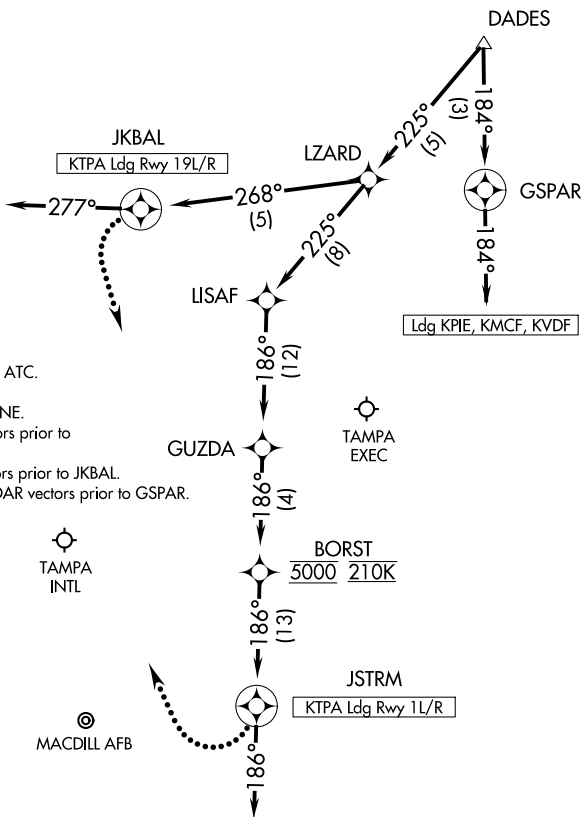


# DADES SEVEN ARRIVAL (RNAV) Arrival Route

TAMPA, FLORIDA

TAMPA APP CON  
 135.5 279.6  
 KMCF ATIS  
 133.825 270.1  
 PIE ATIS  
 134.5  
 TPA D-ATIS  
 126.45  
 VDF AWOS-3  
 121.125

NOTE: RADAR required.  
 NOTE: RNAV 1.  
 NOTE: DME/DME/IRU or GPS required.  
 NOTE: Descend via MACH number until intercepting 280K. Maintain 280K until slowed by the STAR or assigned by ATC.  
 NOTE: Primary landing Rwy 1L/R, 19L/R.  
 NOTE: TPA landing South: Expect 250K at OLENE.  
 NOTE: TPA landing North: Expect RADAR vectors prior to JSTRM.  
 NOTE: TPA landing South: Expect RADAR vectors prior to JKBAL.  
 NOTE: Landing all satellite airports: Expect RADAR vectors prior to GSPAR.  
 NOTE: Turbopjet and turboprop aircraft only.



## ARRIVAL ROUTE DESCRIPTION

LANDING KTPA RUNWAYS 1L/R: From DADES on track 225° to LZARD, then on track 225° to LISAF, then on track 186° to GUZDA, then on track 186° to cross BORST at 5000 and at 210K, then on track 186° to JSTRM, then on heading 186° or as assigned by ATC. Expect RADAR vectors to final approach course.

LANDING KTPA RUNWAYS 19L/R: From DADES on track 225° to LZARD, then on track 268° to JKBAL, then on heading 277° or as assigned by ATC. Expect RADAR vectors to final approach course.

LANDING KPIE/KMCF/KVDF: From DADES on track 184° to GSPAR, then on track 184°. Expect RADAR vectors to final approach course.

## LOST COMMUNICATIONS

KTPA LANDING NORTH: Continue track to JSTRM, turn right to intercept Rwy 1L final approach course, conduct approach.

KTPA LANDING SOUTH: Continue track to JKBAL, turn left to intercept Rwy 19L final approach course, conduct approach.

SE-3, 15 JUL 2021 to 12 AUG 2021

SE-3, 15 JUL 2021 to 12 AUG 2021