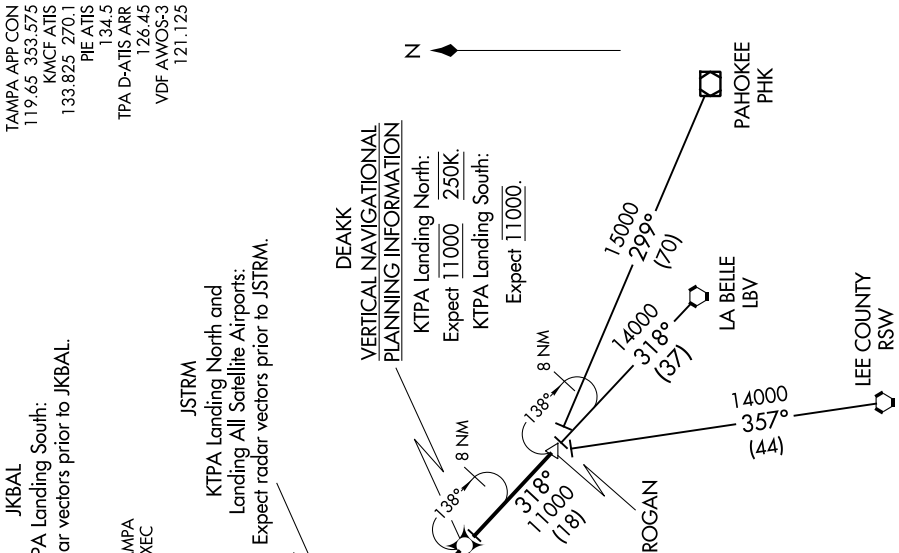


DEAKK FIVE ARRIVAL (RNAV)

SE-3, 15 JUL 2021 to 12 AUG 2021



NOTE: Chart not to scale.

- NOTE: Radar required.
- NOTE: RNAV 1.
- NOTE: DME/DME/IRU or GPS required.
- NOTE: Turbojet and Turboprop aircraft only.
- NOTE: Primary landing Rwy 1L/R, 19L/R.
- NOTE: For non-GPS equipped aircraft: LBV transition: SRQ and LAL must be operational; RSW transition: SRQ, LAL, RSW, and LBV must be operational.

LA BELLE TRANSITION (LBV DEAKK5):
LEE COUNTY TRANSITION (RSW DEAKK5):
PAHOKEE TRANSITION (PHK DEAKK5):

From **ROGAN** on track 318° to **DEAKK**. Thence on assigned runway transition.
 Landing North: From over **DEAKK** on track 318° to **JSTRM**, then on heading 277°. Expect **RADAR** vectors.
 Landing South: From over **DEAKK** on track 318° to **JSTRM**, then on track 006° to **GUZDA**, then on track 007° to **JKBAL**, then left turn on heading 277°. Expect **RADAR** vectors.

LOST COMMUNICATIONS:
KTPA Landing South: Continue track to **JKBAL**, then turn left to intercept the Rwy 19L final approach course, conduct approach.
KTPA Landing North: Continue track to **JSTRM**, then turn right to intercept the Rwy 1L final approach course, conduct approach.

SE-3, 15 JUL 2021 to 12 AUG 2021

DEAKK FIVE ARRIVAL (RNAV)